

SUPPLEMENTARY MATERIALS 2

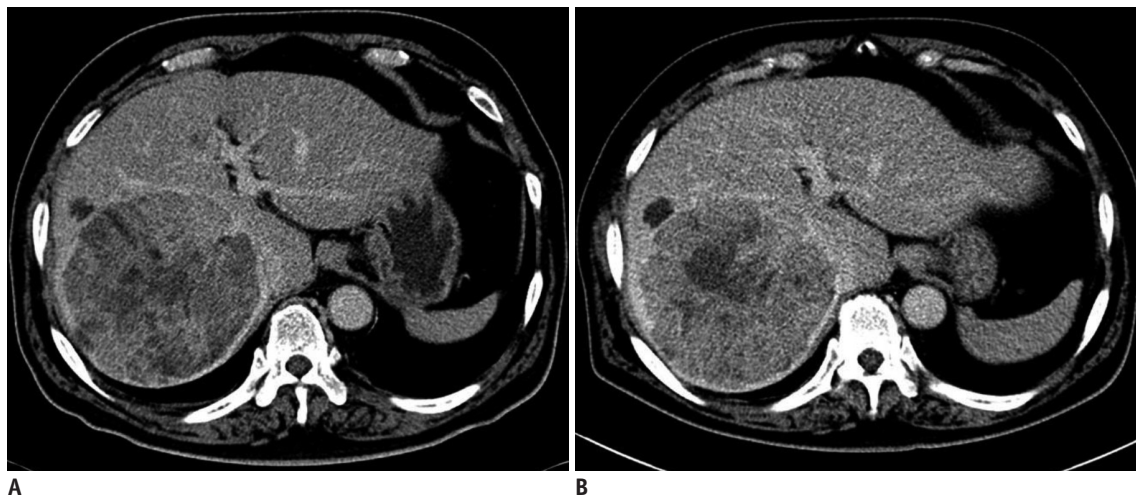


Fig. 1. Liver CT images of 66-year-old man with HCC before TARE (A) and 27 days after TARE (B). Necrotic area was measured as 13.3 cm² before procedure, but necrotic area decreased to 8.8 cm² after procedure. pNI measured as -34% ($pNI = [8.8 - 13.3] / 13.3 = -34\%$). Necrotic areas before treatment were contrast pooled at delayed phase after treatment and observed with higher delayed enhancement. pNI = percentage increase in necrotic area