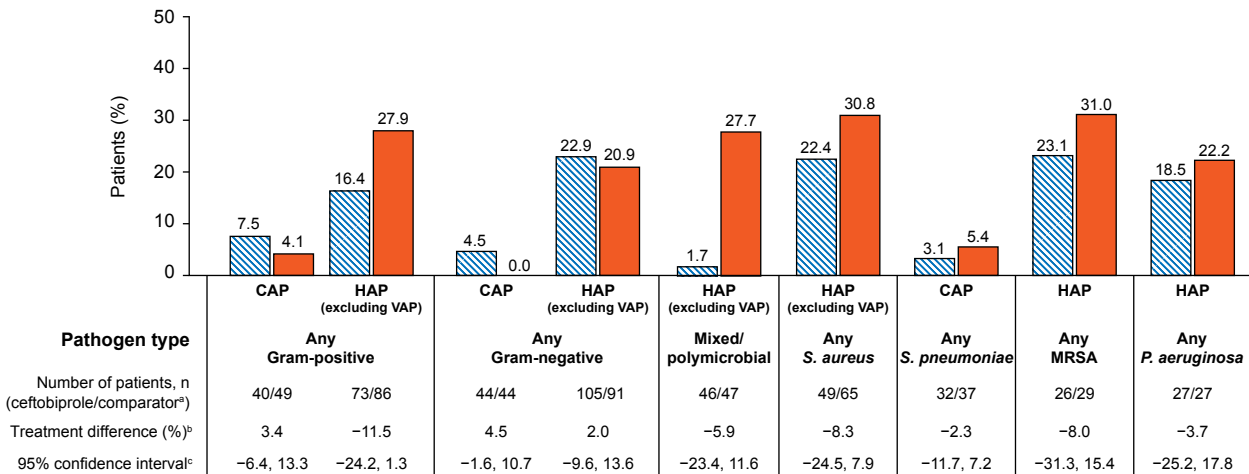
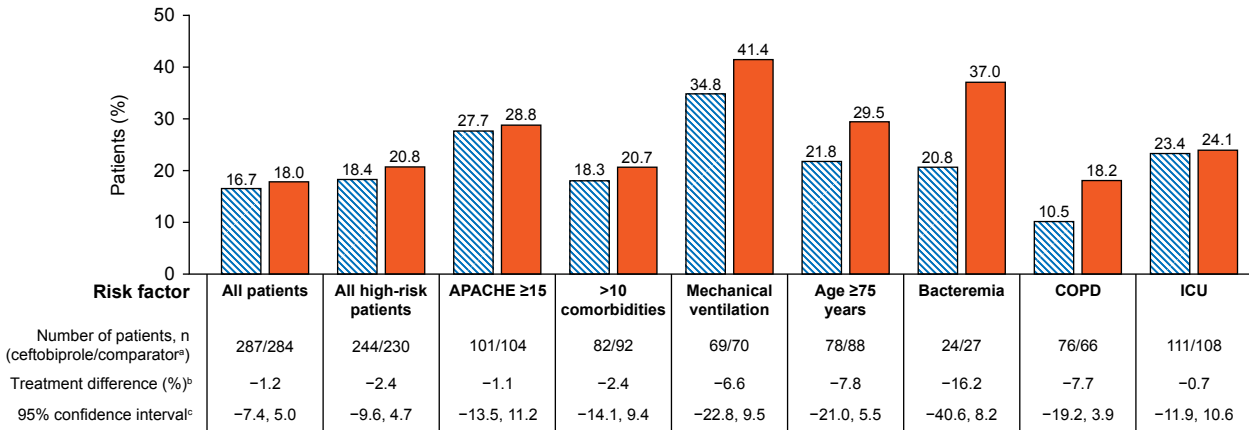
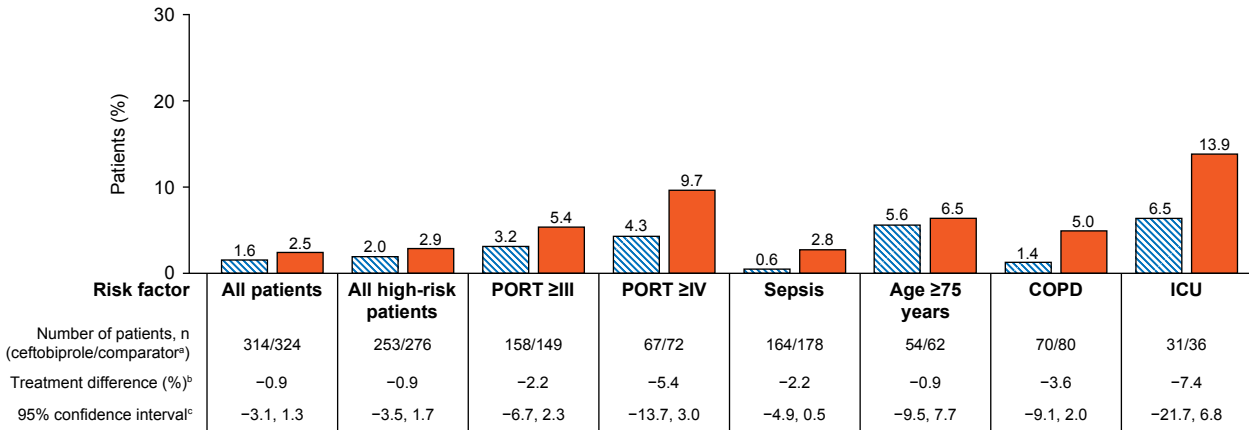


▨ Cefotibiprole    ■ Comparator



APACHE, Acute Physiology and Chronic Health Evaluation; CAP, community-acquired pneumonia; CI, confidence interval; COPD, chronic obstructive pulmonary disease; HAP, hospital-acquired pneumonia; ICU, intensive care unit; ITT, intention-to-treat; PORT, Patient Outcome Research Team; VAP, ventilator-associated pneumonia.