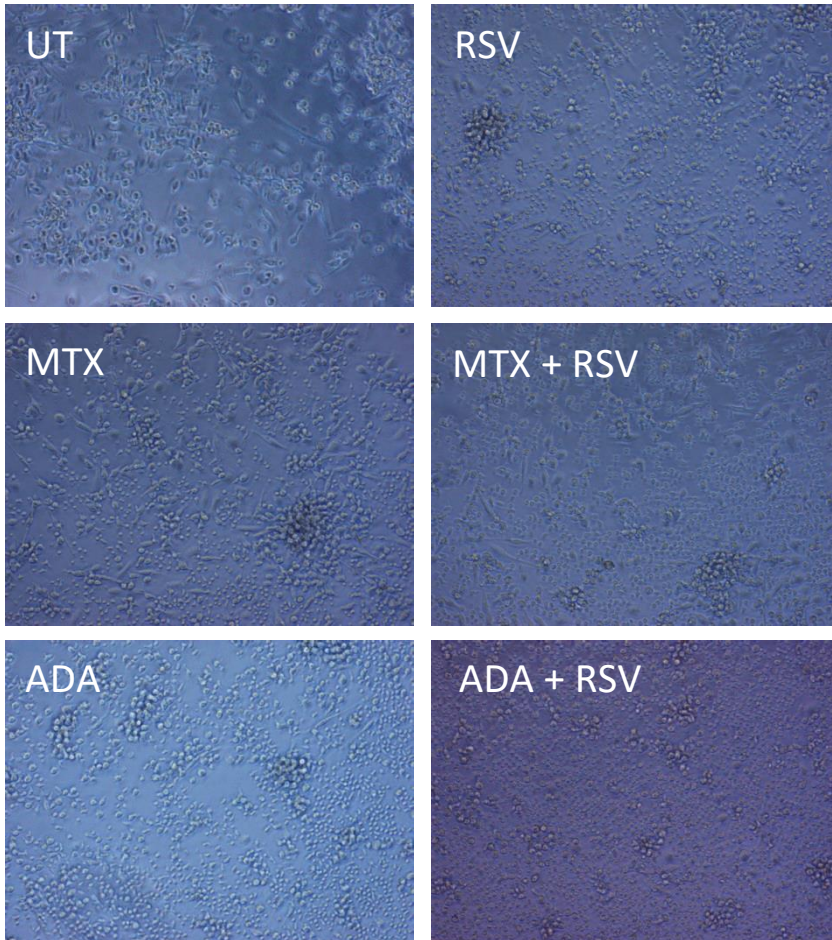


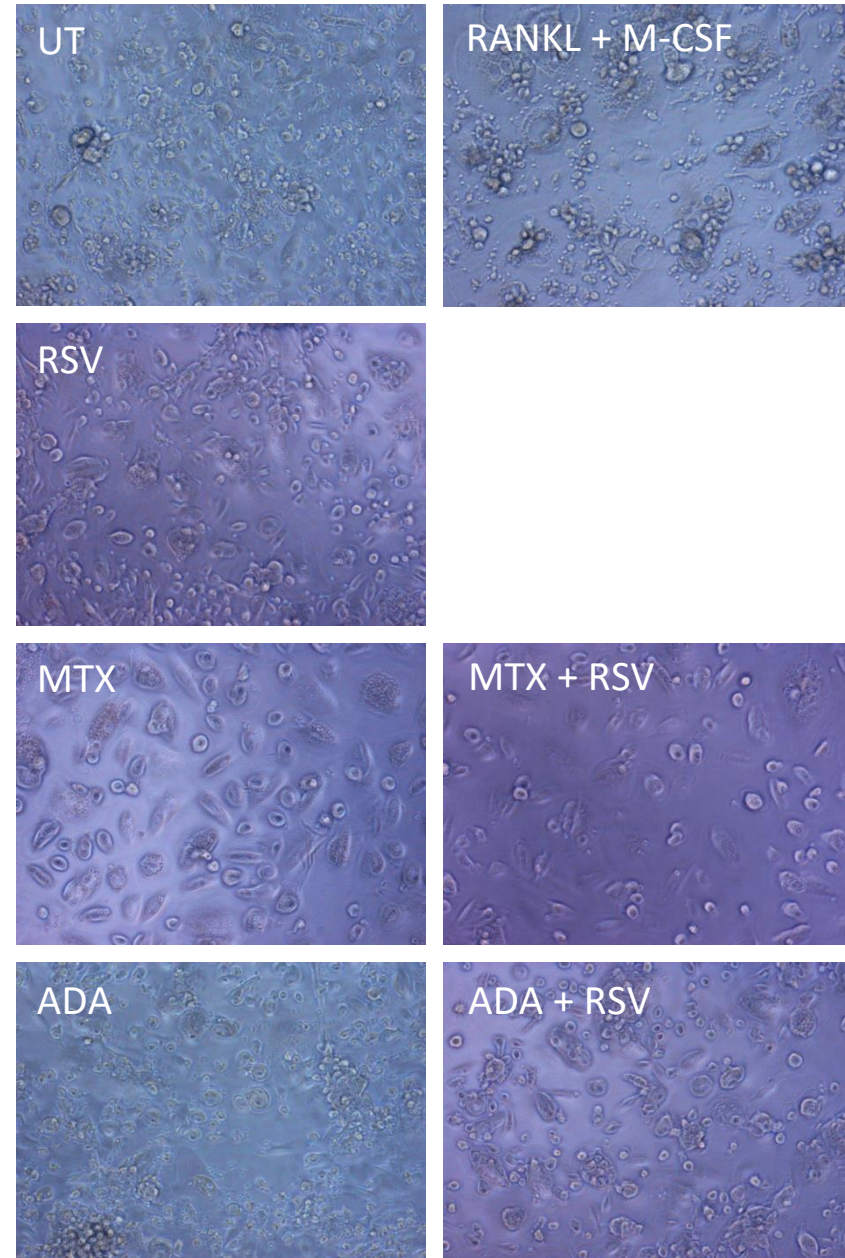
48 hours

SFMC cultures



21 days

SFMC cultures



Additional file 1 Microscope images (x10) of 48 hours and 21 days SFMC after incubation period. No immediate cell loss was detected after treatment. Multinucleated cells were present in 21 days SFMC cultures. UT: untreated (negative control), RANKL + M- SCF: positive control, RSV: resveratrol 25 μ M, MTX: Ebetrex 5 μ g/ml, ADA: Adalimumab 5 μ g/ml.