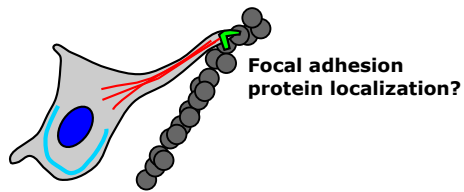


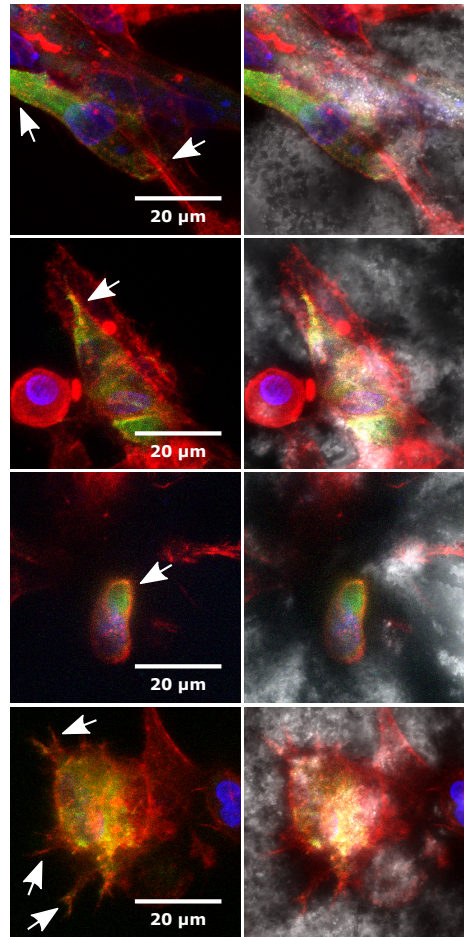
**A**

Transduce with GFP-paxillin biosensor  
 48 h ↓  
 Seed in aligned and unaligned 3D matrices  
 24 h ↓ 100 μM blebbistatin or vehicle control  
 Fix and image

**B**

Fibronectin-coated nanoparticles

3D, aligned matrix



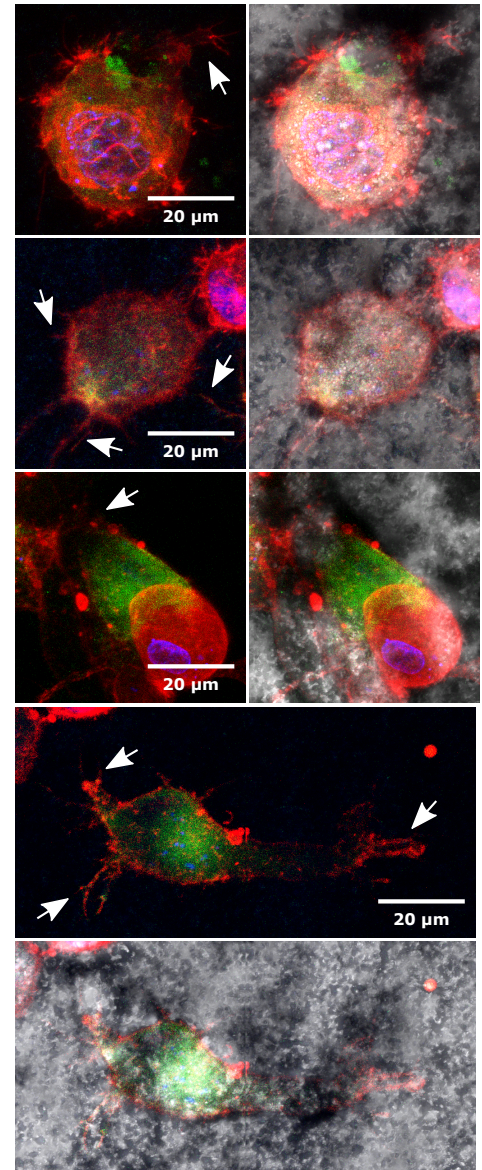
Actin Paxillin Nucleus

HFF cells  
 Vehicle control

**C**

Fibronectin-coated nanoparticles

3D, aligned matrix



Actin Paxillin Nucleus

HFF cells  
 100 μM  
 blebbistatin