

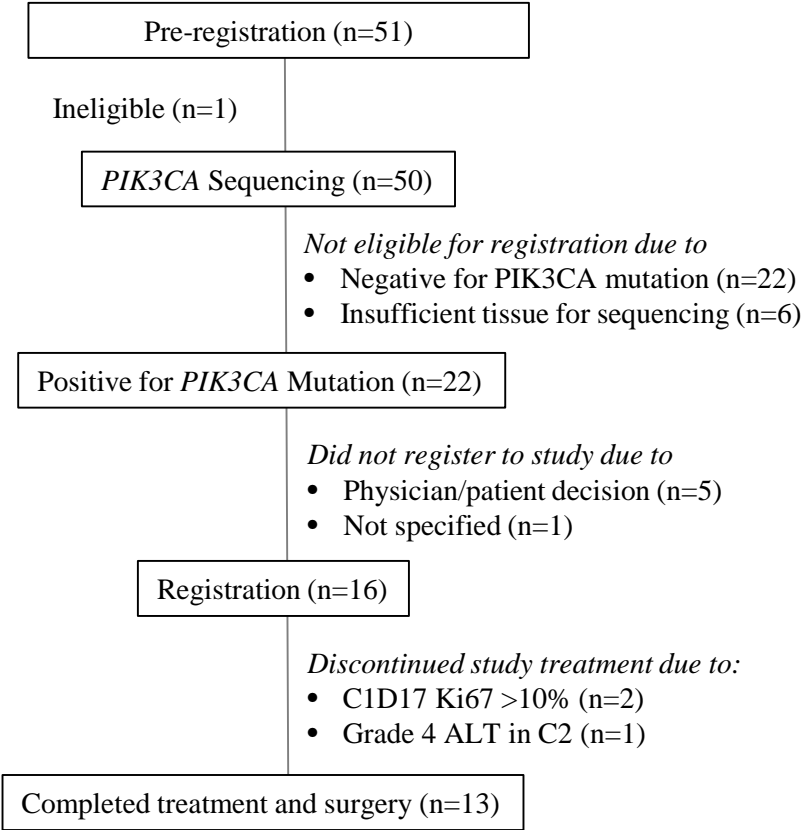
**Supplementary Table S1 Dose administered among the 14 patients with cycle 1 day 17 Ki67 ≤ 10%**

<b>Total dose of MK-2206</b>	<b>N (%)</b>	<b>Reason of dose interruption or dose reduction</b>
2400 mg	8 (57.1%)	Full dose of MK-2206
2250 mg	2 (14.3%)	Omitted one daily dose due to grade 3 rash
2000 mg	1 (7.1%)	Omitted 1 daily dose for 2 consecutive cycles due to grade 1 diarrhea
1700 mg	1 (7.1%)	Omitted 4 daily doses over 3 consecutive cycles due to grade 3 rash
1650 mg	1 (7.1%)	Omitted doses on cycle 1 due to patient misunderstanding administration schedule and then omitted 1 daily dose for 2 consecutive cycles due to grade 3 rash
950 mg	1 (7.1%)	Omitted doses on cycle 1 due to patient misunderstanding administration schedule and then discontinued treatment after cycle 2 due to grade 4 ALT and AST.

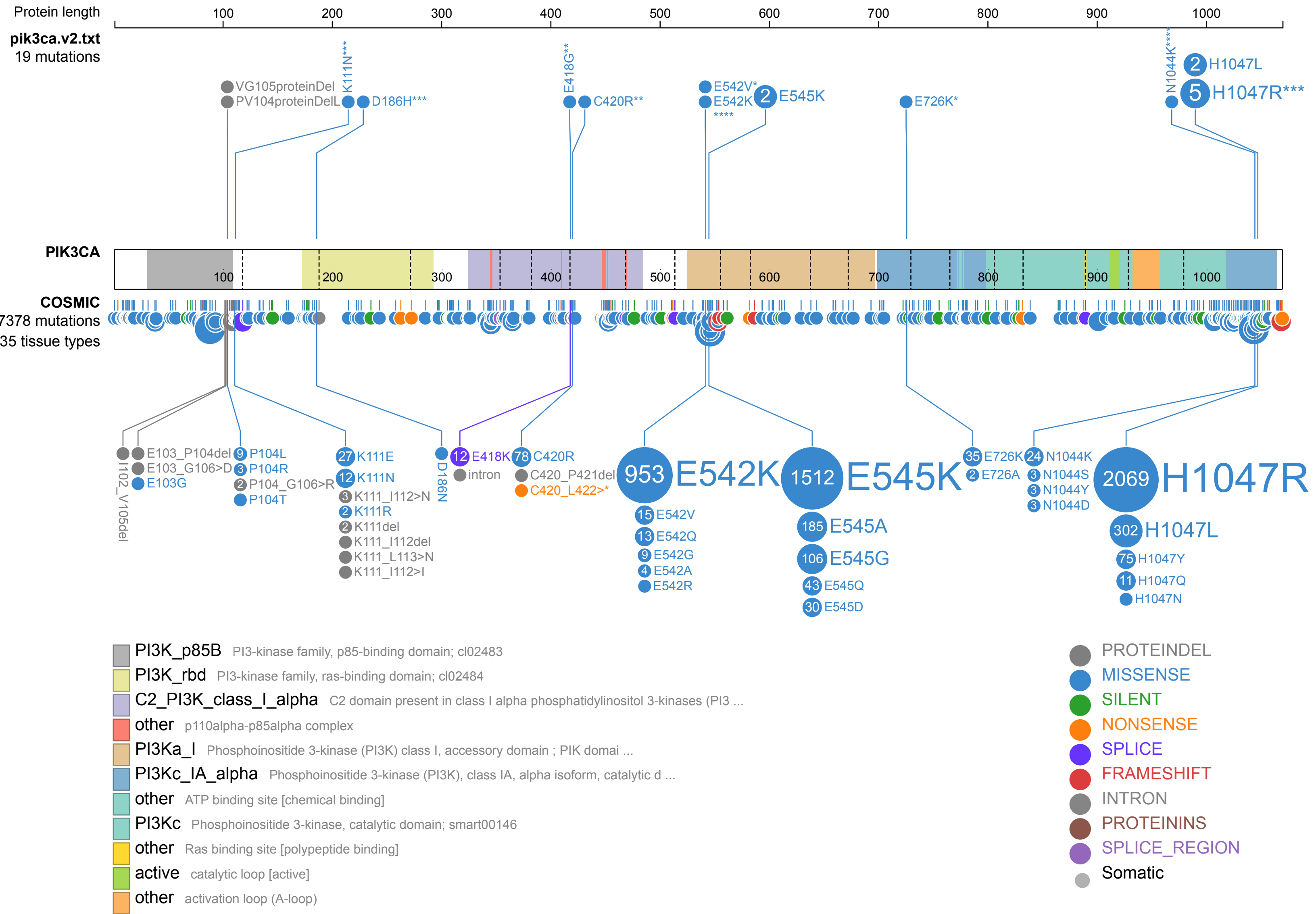
<b>Supplementary Table S2. Surgical Procedures and Pathological Findings (n=13)</b>	
Extent of Surgery	
Partial mastectomy + SLN biopsy	4 (30.8%)
Partial mastectomy + ALND	2 (15.4%)
Partial mastectomy + SLN + ALND	2 (15.4%)
Mastectomy + SLN biopsy	1 (7.7%)
Mastectomy + ALND	2 (15.4%)
Mastectomy + SLN + ALND	2 (15.4%)
Amount of residual tumor in the breast	
0.1-2.0 cm	5 (38.5%)
> 2.0 cm	8 (61.5%)
Number of positive lymph nodes	
0	6 (45.2%)
1-3	6 (45.2%)
4-9	0
10+	1 (7.7%)
SLN, Sentinel lymph node biopsy; ALND, Axillary lymph node dissection	

Supplementary Fig. S1

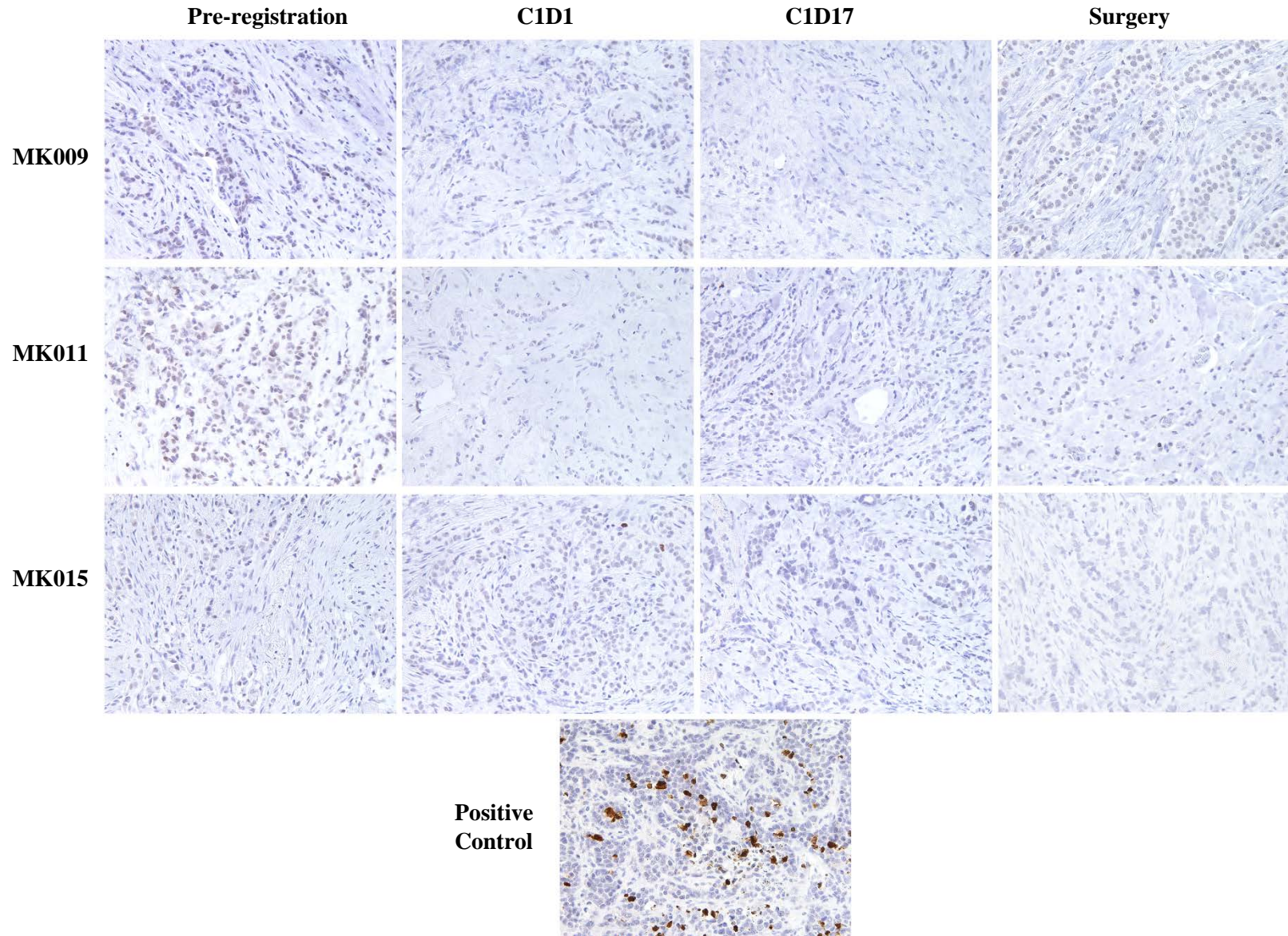
Study Flow Chart



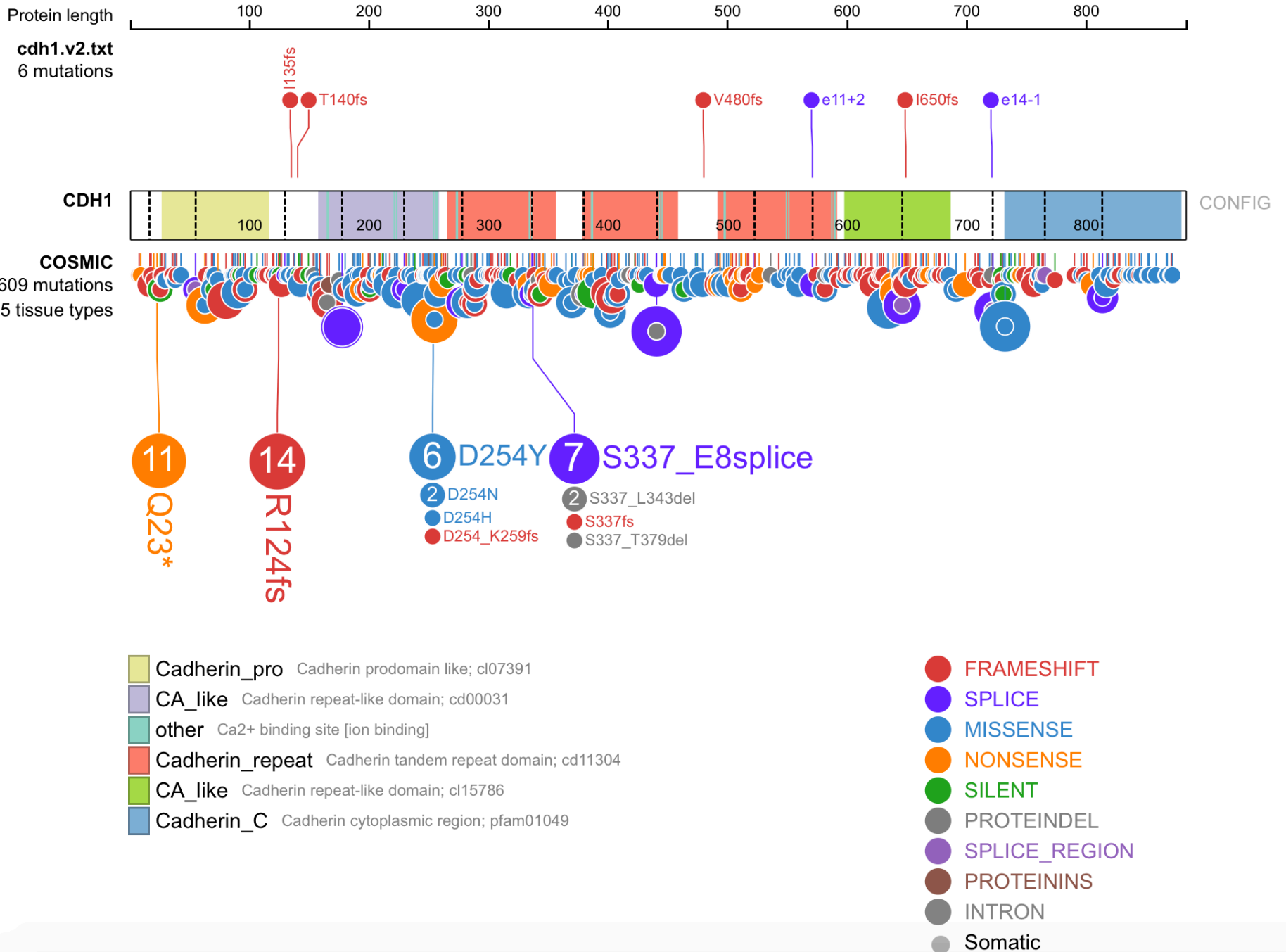
# Supplementary Fig S2



Cleaved PARP

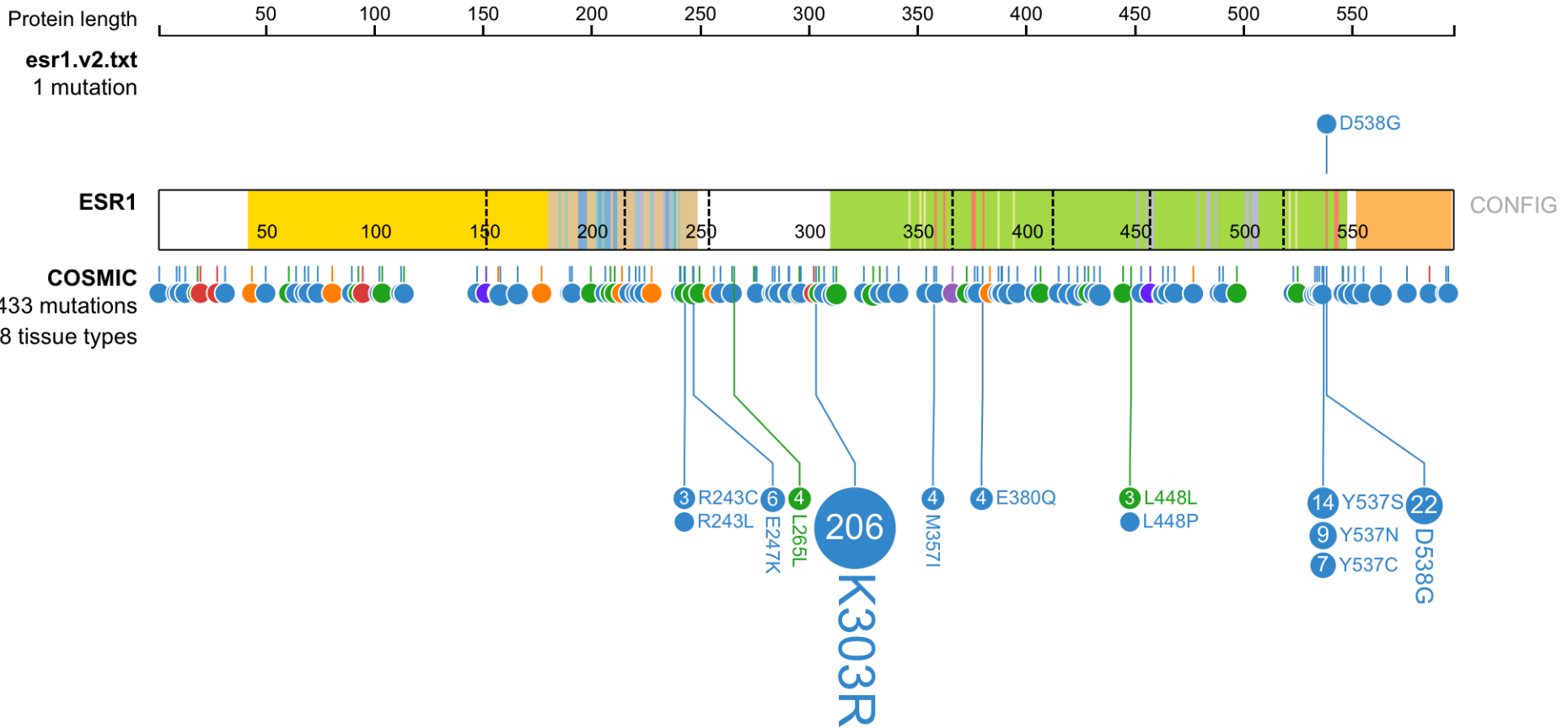


# Supplementary Fig. S4





# Supplementary Fig. S5



- Oest\_recep** Oestrogen receptor; pfam02159
- NR\_DBD\_ER** DNA-binding domain of estrogen receptors (ER) is composed of two C4-ty ...
- other** zinc binding site [ion binding]
- DNA binding** DNA binding site [nucleotide binding]
- other** dimer interface [polypeptide binding]
- NR\_LBD\_ER** Ligand binding domain of Estrogen receptor, which are activated by the ...
- other** ligand binding site [chemical binding]
- other** coactivator recognition site [polypeptide binding]
- ESR1\_C** Oestrogen-type nuclear receptor final C-terminal; pfam12743

- MISSENSE**
- NONSENSE**
- SILENT**
- FRAMESHIFT**
- SPLICE\_REGION**
- SPLICE**
- Somatic**