

Figure S1. The *LMNB1* exon 7/8 junction is similarly reduced as *LMNB1* exon 5/6 (Fig. 8G) in response to Tat-SF1 or SF3b1 knockdown. Primer locations and sequences are given in Table S1. Unpaired, two tailed t-tests with Welch's correction: *, $p < 0.05$; **, $p < 0.005$; ***, $p < 0.0005$; ****, $p < 0.0001$.

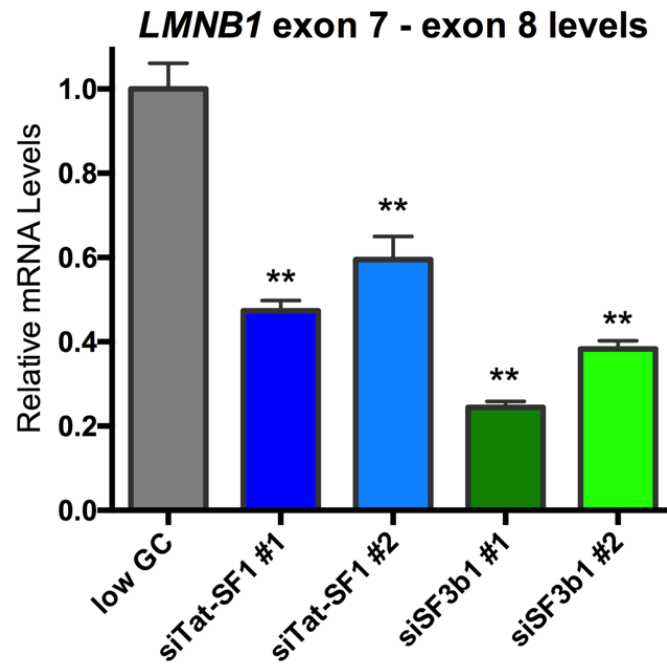


Table S1. Sequences and locations of primers used for RT-qPCR.

GENE NAME	RefSeq ID	LOCATION	SEQUENCE
<i>SF3B1</i>	<u>NM_012433.3</u>	exon 11 (1633) / exon 12 (1634-1652) exon 13 (1879-1860)	GGCTGCATTGCGTCAGATTA CTCTCGGCCTTCCACTCTAG
<i>HTATSF1</i>	<u>NM_001163280.1</u>	exon 5 (968-982) exon 6 (1082-1062)	AAAGGAAGACGGTCTTTGCTG CAGTTGAACTTTGCCACCTC
<i>CCND1</i>	<u>NM_053056.2</u>	exon 3 (719-738) exon 4 (899-880)	GGCGGAGGAGAACAAACAGA TGTGAGGCGGTAGTAGGACA
<i>SIN3B</i>	<u>NM_015260.3</u>	exon 8 (1045-1063) exon 9 (1260-1241)	GCTGGTGTCTGGCTCTGAG TGGTAGGTTTTGGGGAGTGC
<i>LMNB1</i>	<u>NM_005573.3</u>	exon 4 (1597-1616) exon 5 (1763-1744)	GTATGAGTACAAGCTGGCGC GTTCCTCCCTGGCACTGTTG
<i>LMNB1</i>	<u>NM_005573.3</u>	exon 7 (2079-2098) exon 8 (2304-2285)	TGACAGTATCCCGAGCATCC CTGATCATCTCCAGCCTCC
<i>DUSP11</i>	<u>NM_003584.2</u>	exon 4 (540-561) exon 5 (674-678) / exon 6 (699-679)	TCAAGTGCCTGATGATGAGACT GCCTTCTACATCAATCAAATATCTGC
<i>18S</i>	<u>NR_145820.1</u>	(1140-1159) (1374-1354)	GGGAAACCAAAGTCTTTGGG GGAATTAACCAGACAAATCGC