

Supporting Information

Additional Supporting Information may be found online in the the supporting information tab for this article.

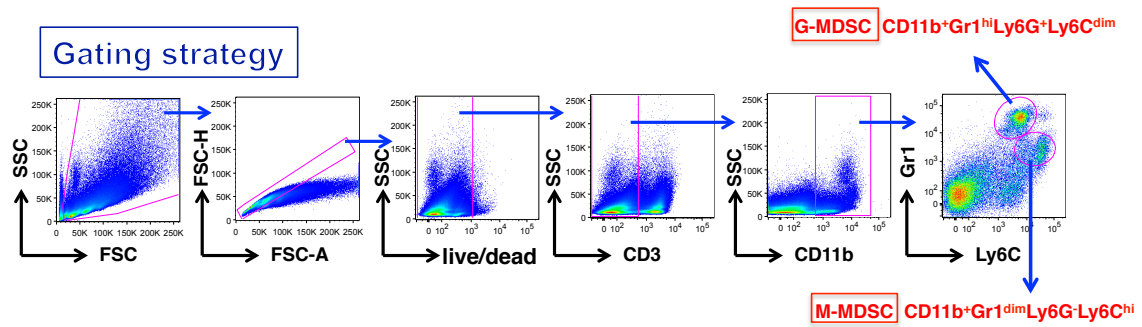


Figure S1. MDSC gating strategy.

MDSC - myeloid-derived suppressor cells

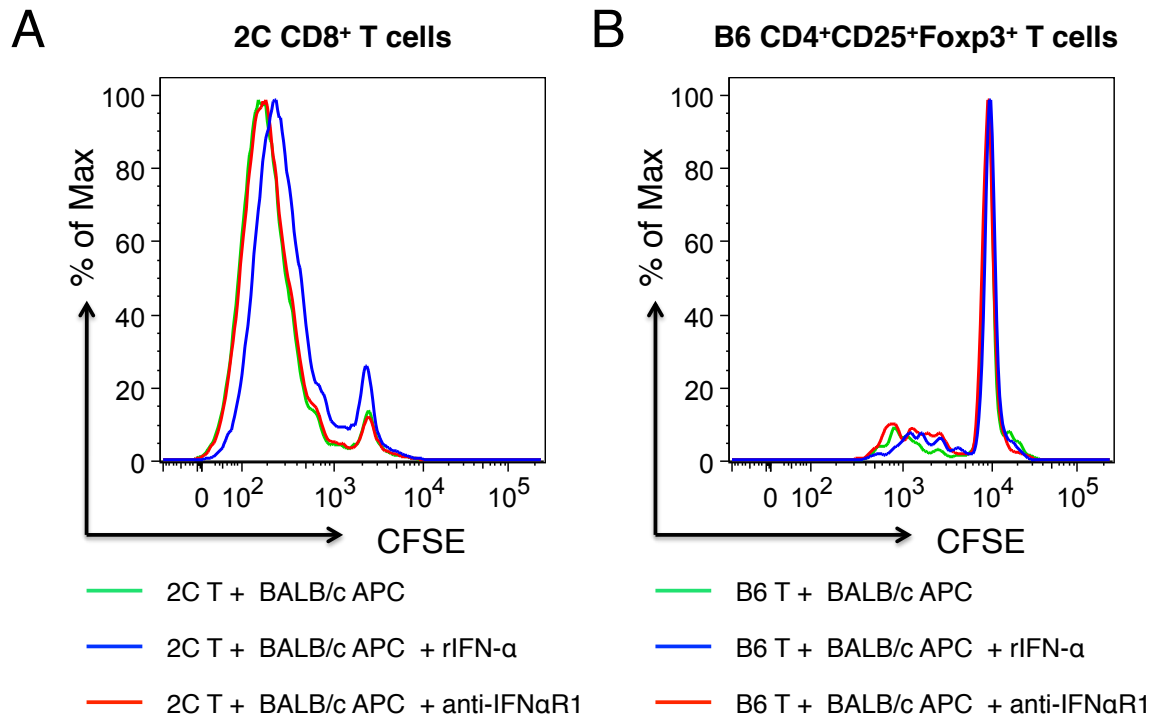


Figure S 2. Recombinant IFN- α or anti-IFN α R1 does not directly affect BALB/c stimulated 2C T cell proliferation or BALB/c stimulated B6 CD4⁺CD25⁺Foxp3⁺ Treg proliferation. (A) 2C CD8⁺ T cell proliferation to BALB/c stimulation was measured by CFSE dilution in MLRs set up as described in Methods. In some cases, rIFN- α (1000 U/ml) or anti-IFN α R1 (20 μ g/ml) was added to the cultures to determine their direct effects on 2C proliferation. Representative histograms were gated on 2C CD8⁺ T cells. (B) B6 CD4⁺CD25⁺Foxp3⁺ Treg proliferation to BALB/c stimulation was measured by CFSE dilution in MLRs set up as described in Methods. In some cases, rIFN- α or anti-IFN α R1 was added to the cultures to determine their direct effects on CD4⁺CD25⁺Foxp3⁺ Treg proliferation. Representative histograms were gated on CD4⁺CD25⁺Foxp3⁺ Tregs.