

**Title:**

Protein tyrosine phosphatase 4A3 (PTP4A3/PRL-3) promotes the aggressiveness of human uveal melanoma through dephosphorylation of CRMP2.

**Authors and affiliations:**

Laura DUCIEL<sup>\*1,2</sup>, Océane ANEZO<sup>\*1,2</sup>, Kalpana MANDAL<sup>3</sup>, Cécile LAURENT<sup>4</sup>, Nathalie PLANQUE<sup>1,5</sup>, Frédéric M. COQUELLE<sup>1,2</sup>, David GENTIEN<sup>6</sup>, Jean-Baptiste MANNEVILLE<sup>7</sup>, and Simon SAULE<sup>1,2</sup>.

**Supplemental figures legend****a) Supplemental Figure 1: PTP4A3 expression and / or CRMP2 knockdown increases the percentage of cells with micronuclei in OCM-1 and MP41 cell lines**

- A) Visualization of nuclei and micronuclei in OCM-1 cells were assessed by DAPI staining after PFA fixation. Scale bar = 20  $\mu$ m. Yellow arrows indicate micronuclei.
- B) Quantification of the percentage of OCM-1 cells with micronuclei. Data are shown as the mean values  $\pm$  SEM. >150 cells were analyzed. \*\*p < 0.01, \*\*\*p < 0.001, Student's t-test.
- C) Visualization of nuclei and micronuclei in MP-41 cells were assessed by DAPI staining after PFA fixation. Scale bar = 20  $\mu$ m.
- D) Quantification of the percentage of MP-41 cells with micronuclei. Data are shown as the mean values  $\pm$  SEM. >150 cells were analyzed. \*\*p < 0.01, Student's t-test.

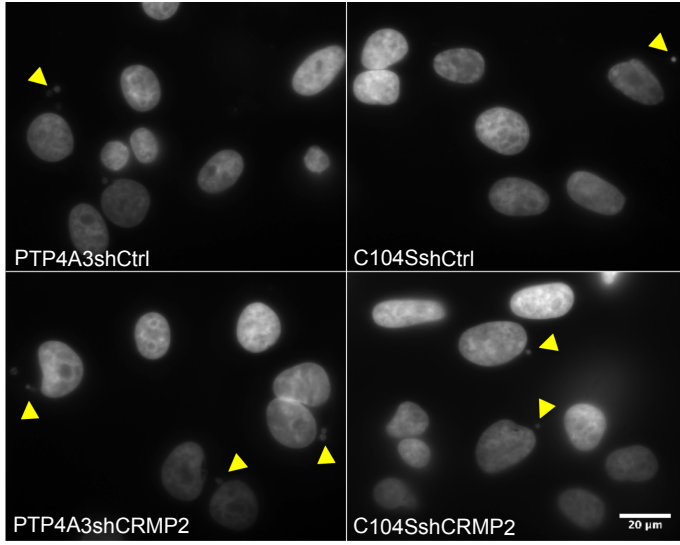
**b) Supplemental Figure 2: ROCKII inhibitor Y27632 decreases phosphorylated cofilin**

Western blot showing the decrease of phosphorylated cofilin (S9) levels in OCM-1 cells treated with Y27632, confirming the inhibition of ROCKII. Twenty micrograms of protein extract was loaded. The detection of total cofilin was performed as a loading control.

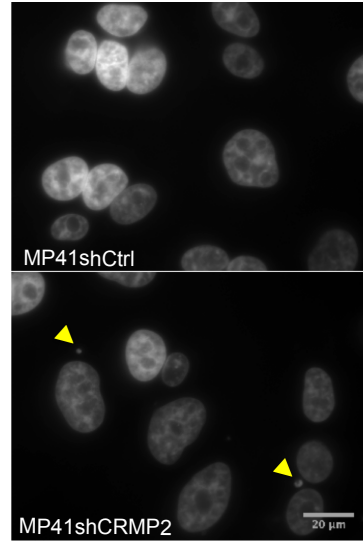
**c) Supplemental Figure 3: CRMP2 affects microtubules dynamics**

- A) Visualization of the microtubule network in OCM-1 cells as assessed by tubulin immunofluorescence after PFA fixation. Cells were treated with nocodazole and microtubule repolymerization followed for T0, 5, and 10 minutes after drug rinse. After deconvolution, images were processed using ImageJ64. Scale bar = 10  $\mu$ m.
- B) Quantification of the number of fragments of < adjoining 40 pixels normalized to the cell area in OCM-1 cells at T5. Data are shown as the mean values  $\pm$  SEM. ~20 cells were analyzed. \* $p < 0.05$ , Student's t-test.
- C) Quantification of the percentage of cells with an aster at T5. Data are shown as the percentage  $\pm$  SD. ~20 cells were analyzed. \*\* $p < 0.01$ , \* $p < 0.05$ , Student's t-test.

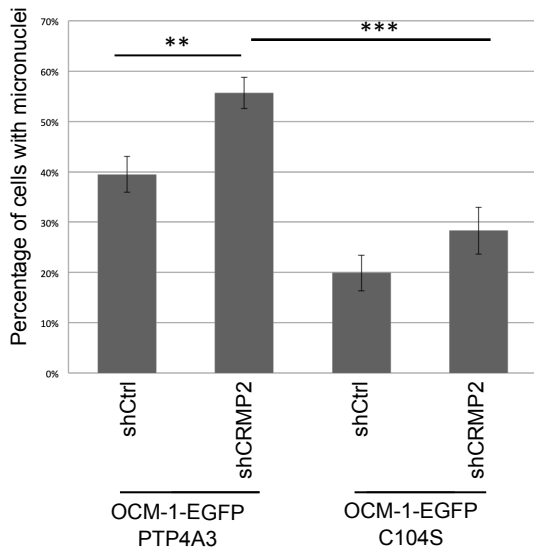
A



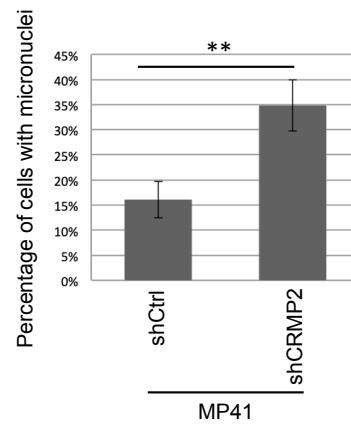
C



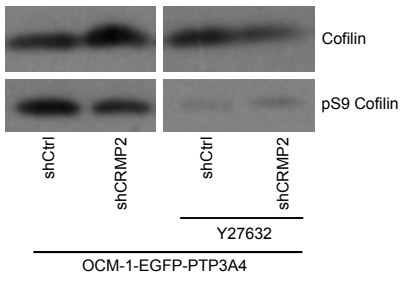
B



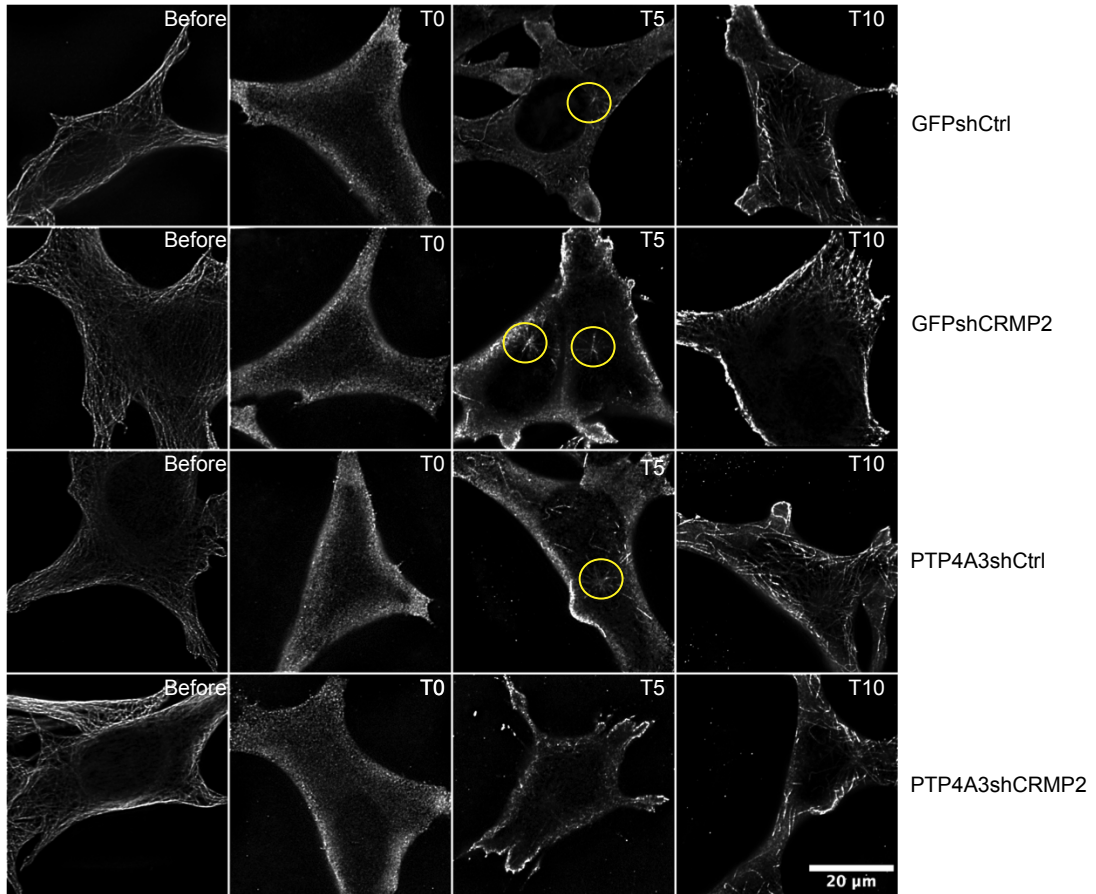
D



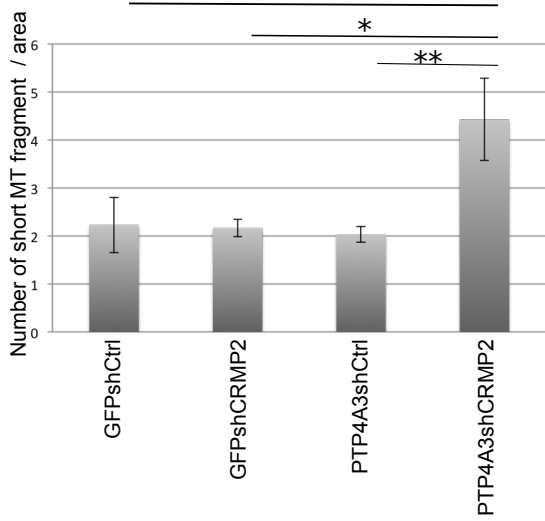
A



A



B



C

