

**MiR-494 acts as a tumor promoter by targeting CASP2 in
non-small cell lung cancer**

Qiao Zhang¹, Yan Li¹, Mei Zhao¹, Hong Lin¹, Wenjie Wang¹, Dongdong
Li¹, Wei Cui², Caihong Zhou³, Jialing Zhong^{4*} & Changzhi Huang^{1*}

¹Department of Etiology and Carcinogenesis, State Key Laboratory of Molecular Oncology, Beijing Key Laboratory for Carcinogenesis and Cancer Prevention, National Cancer Center/National Clinical Research Center for Cancer/Cancer Hospital, Chinese Academy of Medical Sciences and Peking Union Medical College, Beijing, 100021, China

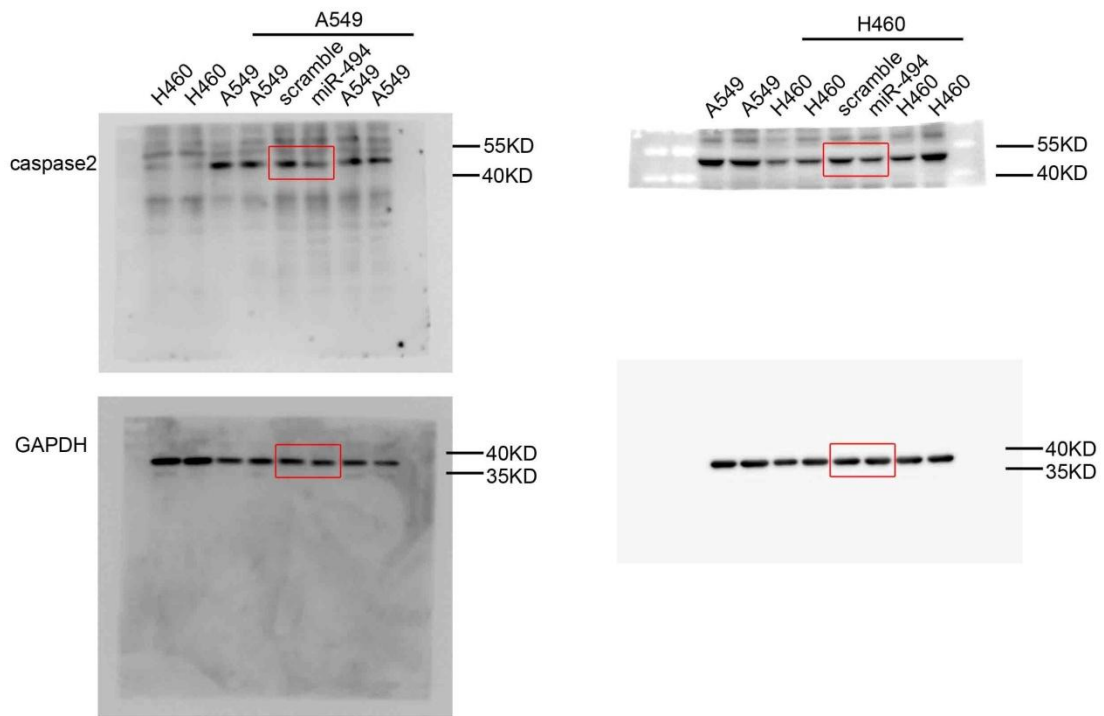
²Department of Clinical Laboratory, National Cancer Center/National Clinical Research Center for Cancer/Cancer Hospital, Chinese Academy of Medical Sciences and Peking Union Medical College, Beijing, 100021, China

³Department of Education, National Cancer Center/National Clinical Research Center for Cancer/Cancer Hospital, Chinese Academy of Medical Sciences and Peking Union Medical College, Beijing, 100021, China

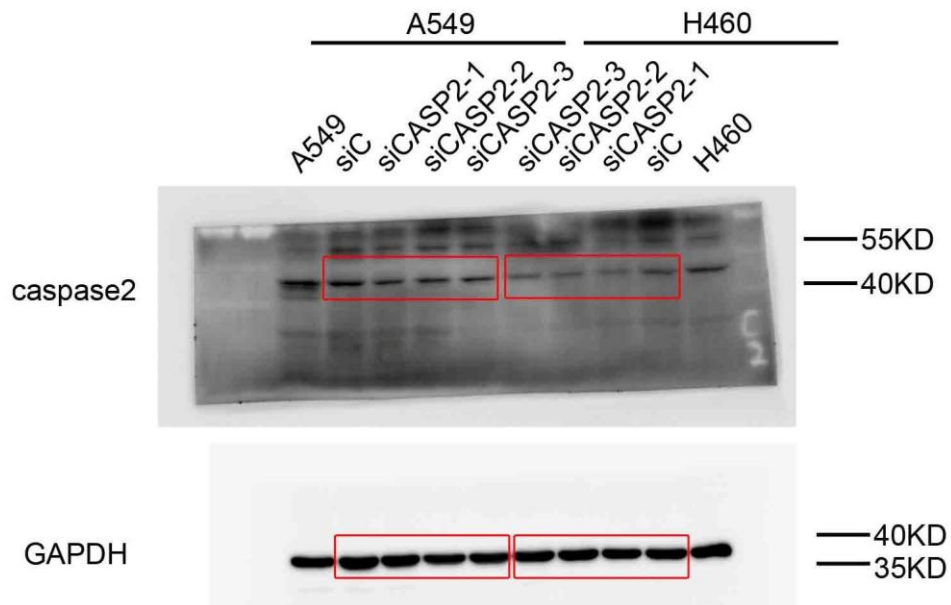
⁴Department of Laboratory Medicine, Sichuan Academy of Medical Science and Sichuan Provincial People's Hospital, Chengdu, 610072, Sichuan Province, China

Address correspondence to: Changzhi Huang, E-mail: huangpumc@163.com, huangcz@cicams.ac.cn or Jialing Zhong, E-mail: zhongjl03@163.com.

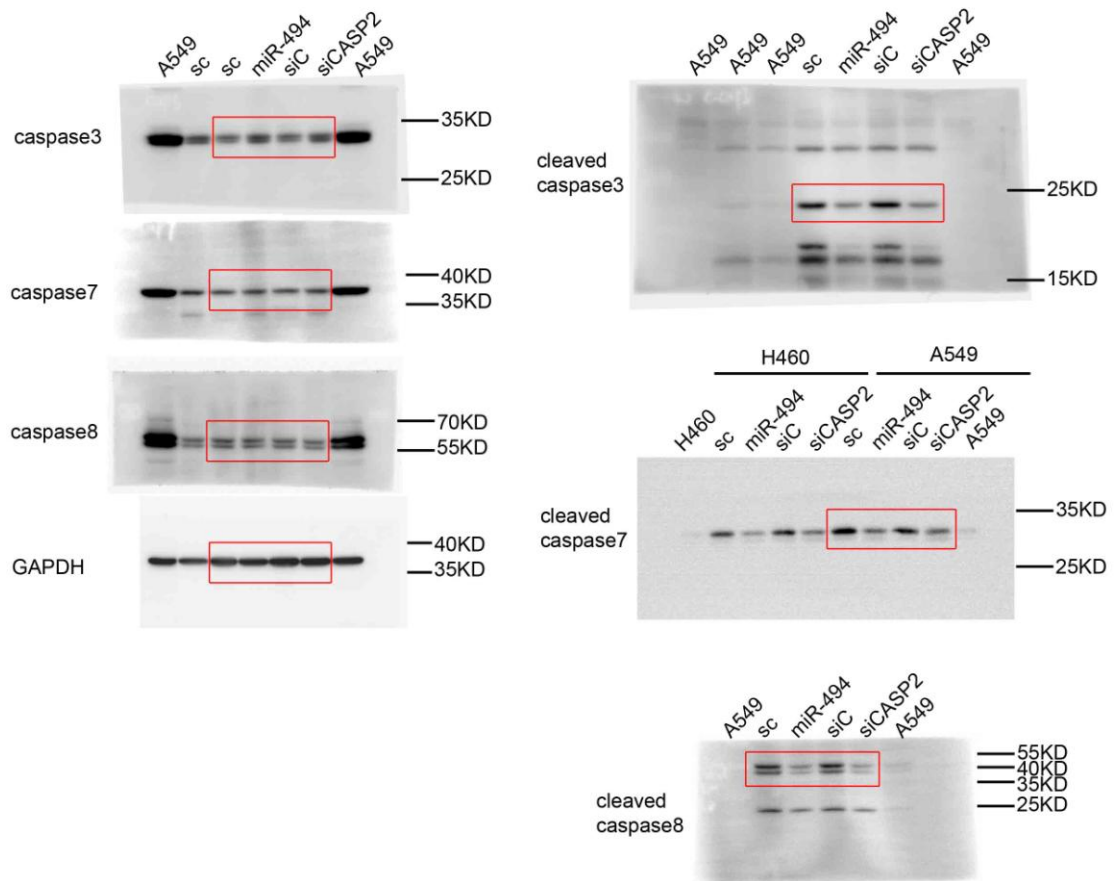
Supplementary data



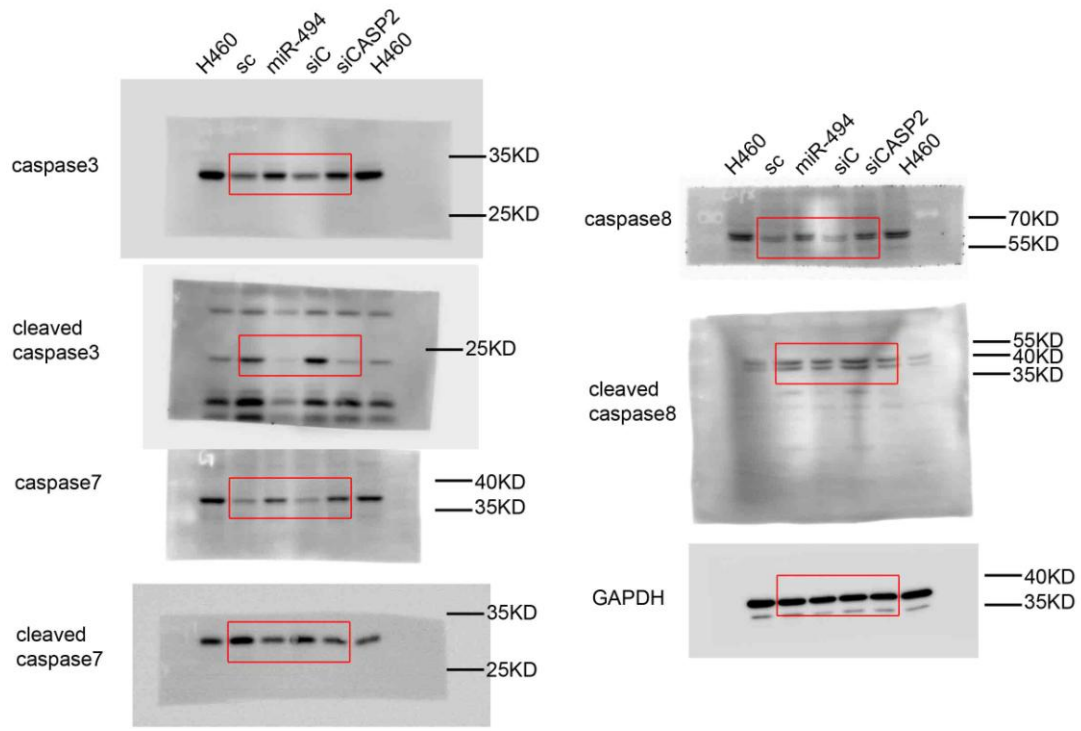
Supplemental Fig 1 The whole PVDF membrane stainings for the western blot data in Figure 5d were presented above. Images were cropped as the indication of red lines.



Supplemental Fig 2 The whole PVDF membrane stainings for the western blot data in Figure 6b and 6c were presented above. Images were cropped as the indication of red lines.



Supplemental Fig 3 The whole PVDF membrane stainings for the western blot data in Figure 7a were presented above. Images were cropped as the indication of red lines.



Supplemental Fig 4 The whole PVDF membrane stainings for the western blot data in Figure 7b were presented above. Images were cropped as the indication of red lines.