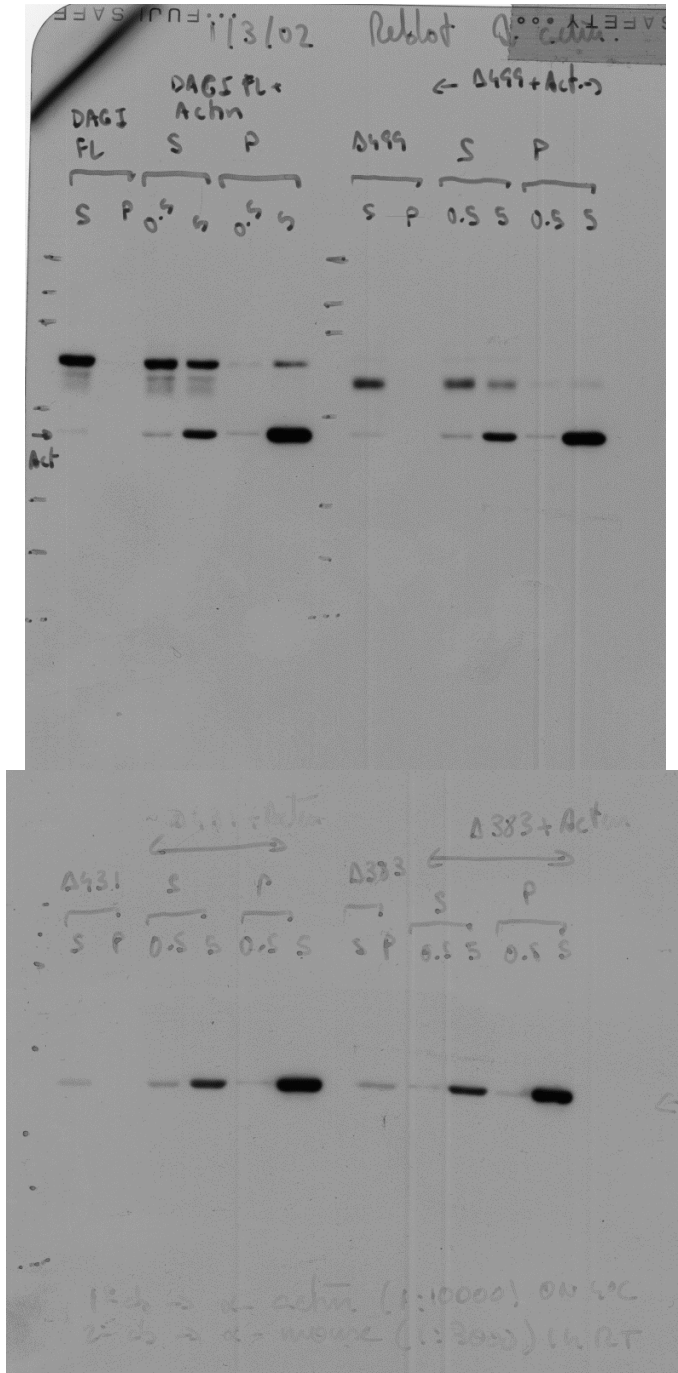


Item 1. Detection of Flag-tagged RasGRP fragments. This image shows a new scan of the original film used in the top panels of our original [Figure 6C](#). This film shows the detection of the Flag-tagged Ras GRP fragments using immunoblot analysis with antibodies to the Flag epitope that were utilized to generate the foregoing panels.



Item 3. Detection of actin in immunoblots generated using independent aliquots of the same extracts analyzed in Items #1 and #2. These images show new scans of the original films that were used to generate all the bottom panels of the **new Figure 6C** presented in this Corrigenda. These scans include the detection of: **(i)** The actin bands in a reblotted filter (top film). **(ii)** The actin bands detected in a filter derived from an independent electrophoresis of aliquots of the same centrifugation experiment (to avoid the overlap between actin and Ras GRP delta383-609 band as indicated in the discussion of **Item #2**) (bottom film).