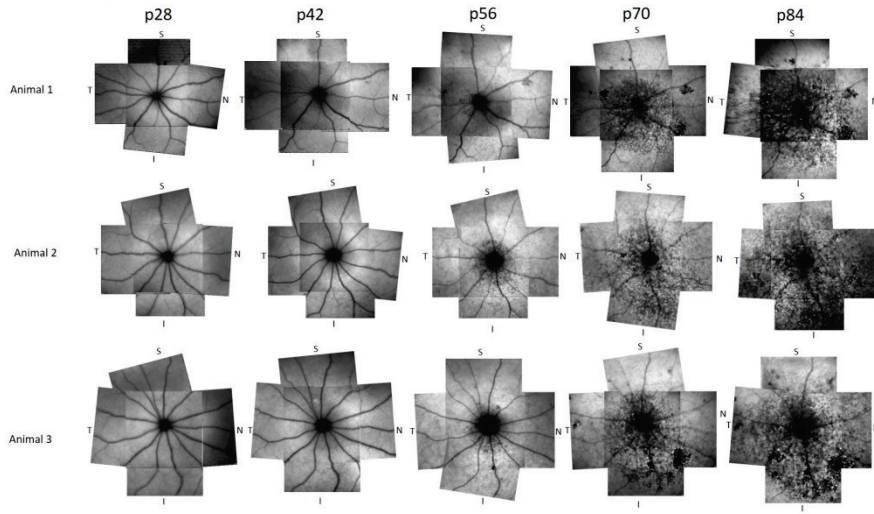


Supplementary Figure 6



Supplementary Figure 6. BL-FAF longitudinal follow-up in three representative RCS rats.

BL-FAF imaging was performed at indicated days postnatal in three representative RCS rats. Each panel is a composite of five BL-FAF scans. To generate the composite image, the size of the optic disc was matched and then the images were aligned according to the blood vessel orientation.

T- Temporal, N- Nasal, S- Superior, I-Inferior.