

Figure S1.

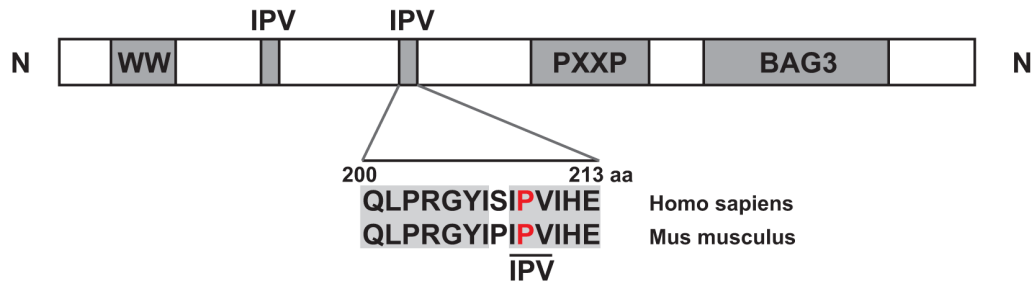


Figure S1. Amino acid sequence at second IPV motif alignment between human and mouse BAG3. Identical amino acids between human and mouse BAG3 are highlight in gray colors. Positions of the IPV triads are underlined. The mutated Proline residues are marked in red colors. aa, amino acid residues.

Table S1. Genotypes of embryos from *Bag3^{m/+} / Bag3^{m/+}* intercrosses.

Genotype	Observed	Expected
Wildtype (+/+)	27.7% (n=30)	25% (n=27)
<i>Bag3^{m/+}</i>	47.2% (n=51)	50% (n=54)
<i>Bag3^{m/m}</i>	23.1% (n=27)	25% (n=27)
Total	100% (n=108)	100% (n=108)

Table S2. Primer sequences used for quantitative RT-PCR analysis.

Gene	Forward Primer (5'-3')	Reverse Primer (5'-3')
<i>Anf</i>	GATAGATGAAGGCAGGAAGCCGC	AGGATTGGAGCCCAGAGTGGACTAGG
<i>Bnp</i>	TGTTTCTGCTTTTCCTTTATCTGTC	CTCCGACTTTTCTCTTATCAGCTC
<i>Coll1a1</i>	TCACCAAACCTCAGAAGATGTAGGA	GACCAGGAGGACCAGGAAG
<i>Coll3a1</i>	ACAGCAGTCCAACGTAGATGAAT	TCACAGATTATGTCATCGCAAAG
<i>18s</i>	GGAAGGGCACCACCAGGAGT	TGCAGCCCCGGACATCTAAG

Table S3. Antibodies used for western blot analysis.

Antibody	Source	Cat. No.
BAG3	Proteintech	10599-1-AP
HSP22/HSPB8	Abcam	ab151552
αB-crystallin/HSPB5	Enzo Life Sciences	ADISPA-223
HSP20/HSPB6	R&D	MAB4200
HSP70/HSP72	Enzo Life Sciences	ADISPA-810-D
HSP90	Abcam	ab178854
HSC70/HSP73	Enzo Life Sciences	ADISPA-815-F
LC3B	Cell Signaling	2775S

Ub	Santa Cruz	sc-8017
SQSTM1/p62	Progen Biotechnik	GP62-C
GAPDH	Santa Cruz	sc-32233