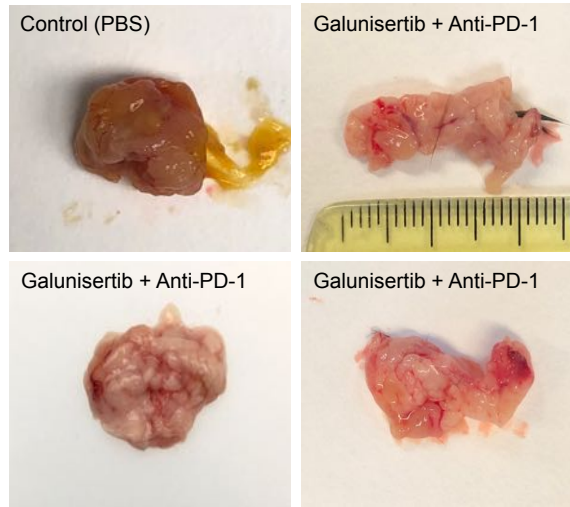
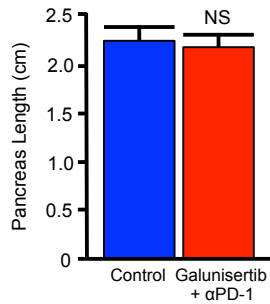
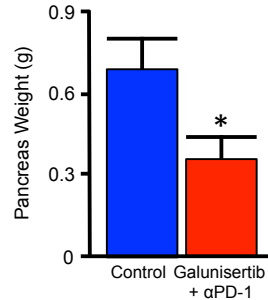


**A****B****C**

**Figure S4. Galunisertib and anti-PD-1 dual treatment restores normal pancreas architecture and reduces gland weight**

Pdx1-Cre x LSL-KRAS<sup>G12D</sup> x TP53<sup>R172H</sup> (KPC) mice were generated as a model of aggressive PDAC and treated with either a PBS vehicle (Control), Galunisertib, anti-PD-1, or Galunisertib and anti-PD-1 as described. **(A)** The whole pancreas from either PBS treated (Control) or Galunisertib and anti-PD-1 dual-treated mice was removed and photographed as displayed. **(B,C)** Once removed, the pancreases from Control or Galunisertib and anti-PD-1 dual-treated mice were measured for length or weighed. Values were averaged and are displayed  $\pm$  S.E.M. (\* $p < 0.05$ , N=4/group).