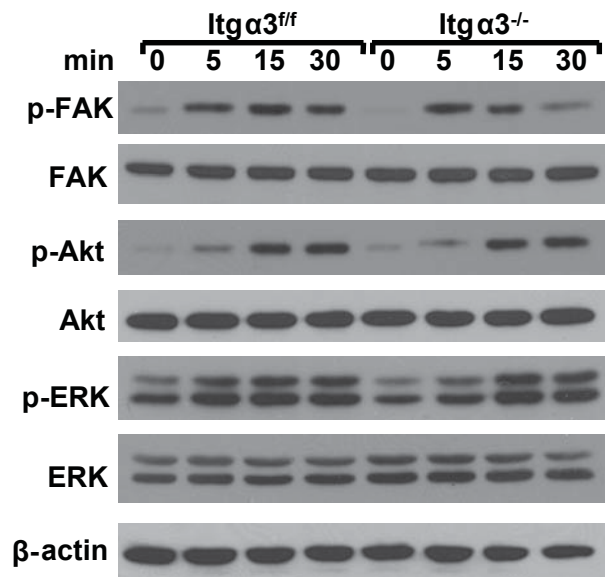
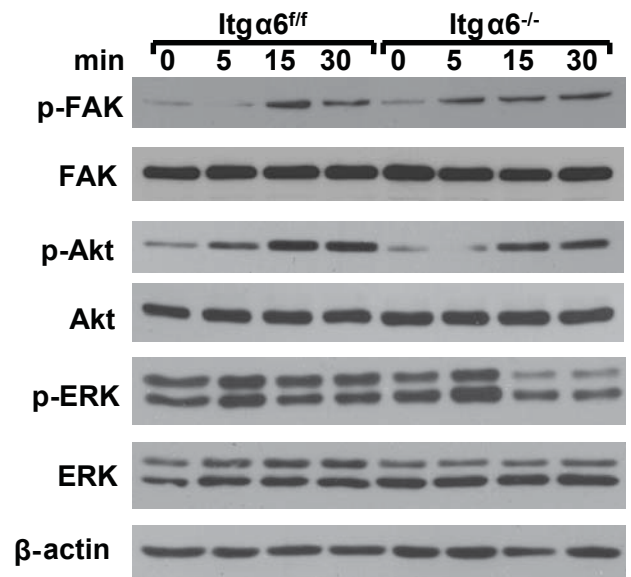
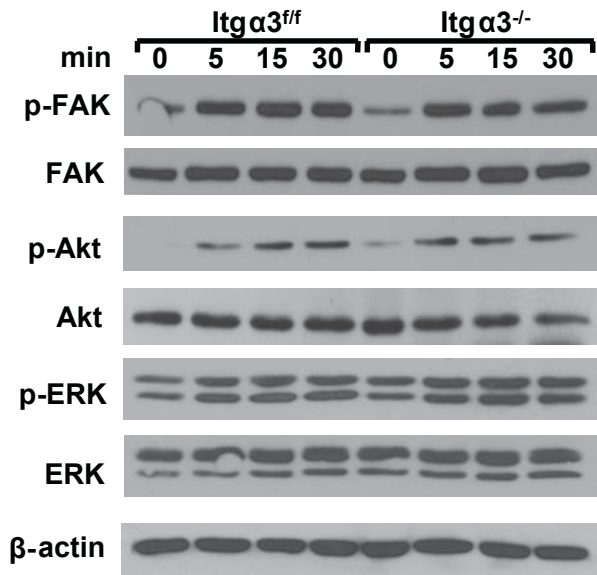
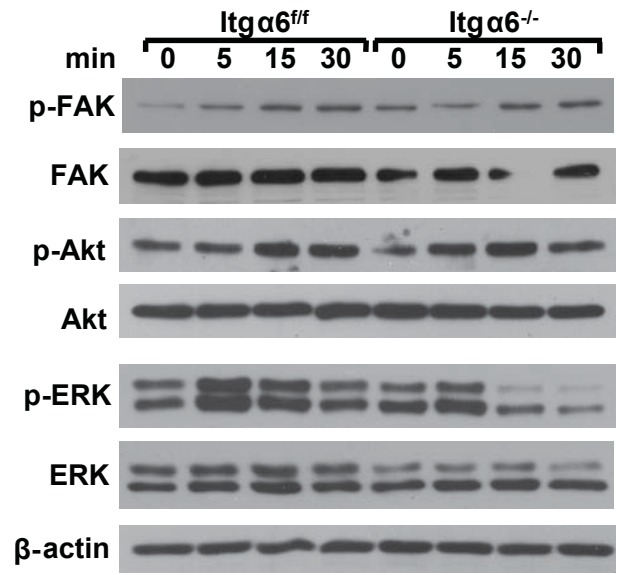


**A****FGF10****B****GDNF**

## Supplemental Data

(A-B)  $Itg\alpha 3^{ff}$ ,  $Itg\alpha 3^{ff}$ ,  $Itg\alpha 3^{-/-}$  and  $\alpha 6^{-/-}$  CD cells were plated on LM-511 for 1 h, treated with FGF10 (A) or GDNF (B) (10 ng/ml each) and lysed 5, 15 and 30 min after addition of growth factors. Cell lysates were subjected to immunoblot analysis for phospho- FAK, Akt and ERK1/2;