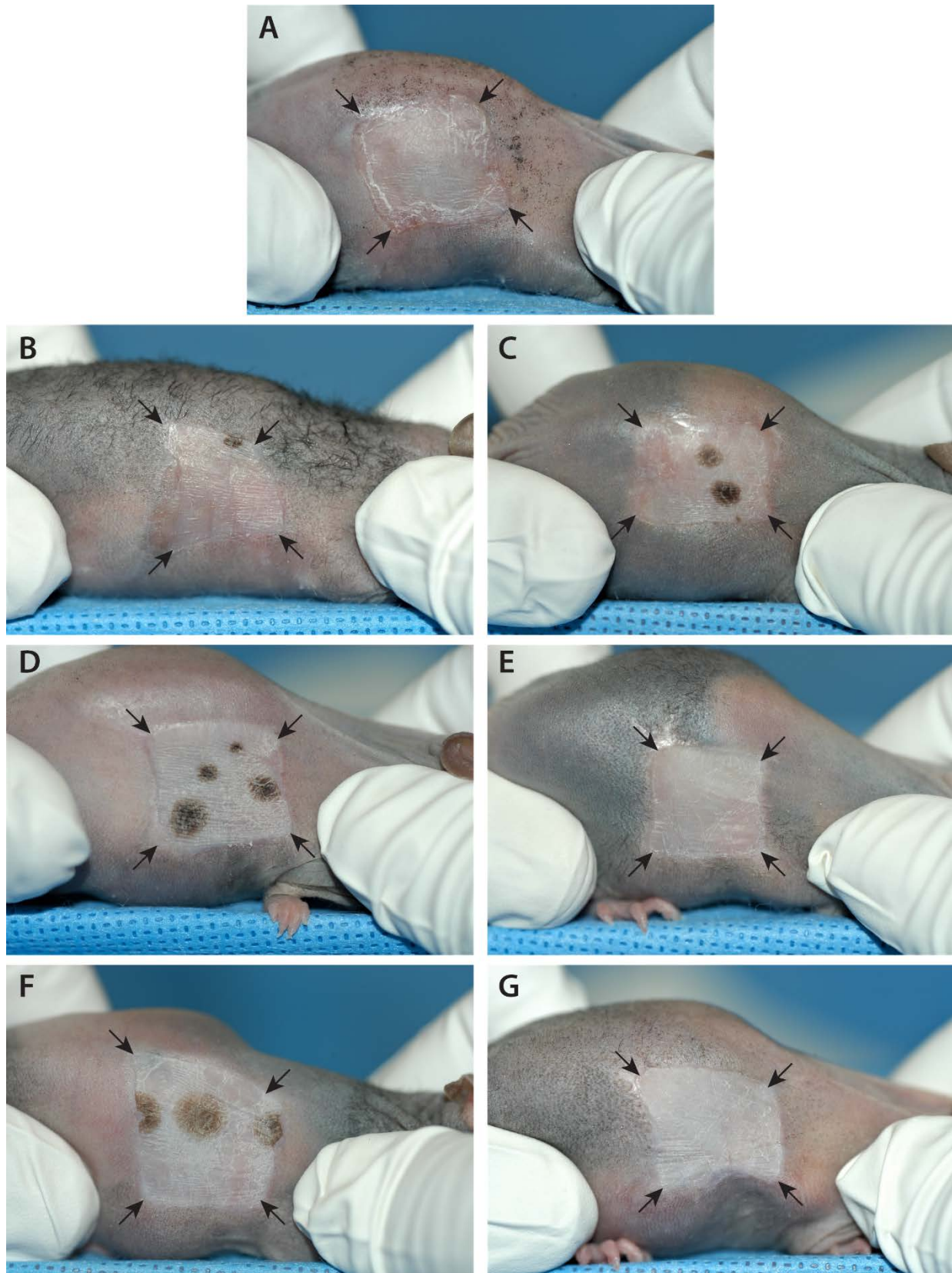


Supporting Information: S2 Figure



S2. Mice grafted with engineered skin substitutes (ESS). Shown are photographs of grafted mice from week 2 (A), week 4 (B), week 6 (C), week 8 (D), week 10 (E), week 12 (F), and week 14 (G) after grafting. Arrows indicate corners of grafted ESS. Note that different mice are shown in each panel; photographs were taken immediately before euthanasia and biopsy collection. Spots of pigment observed in some grafts are due to passenger melanocytes present non-specifically in the epidermal cultures used for preparation of ESS.