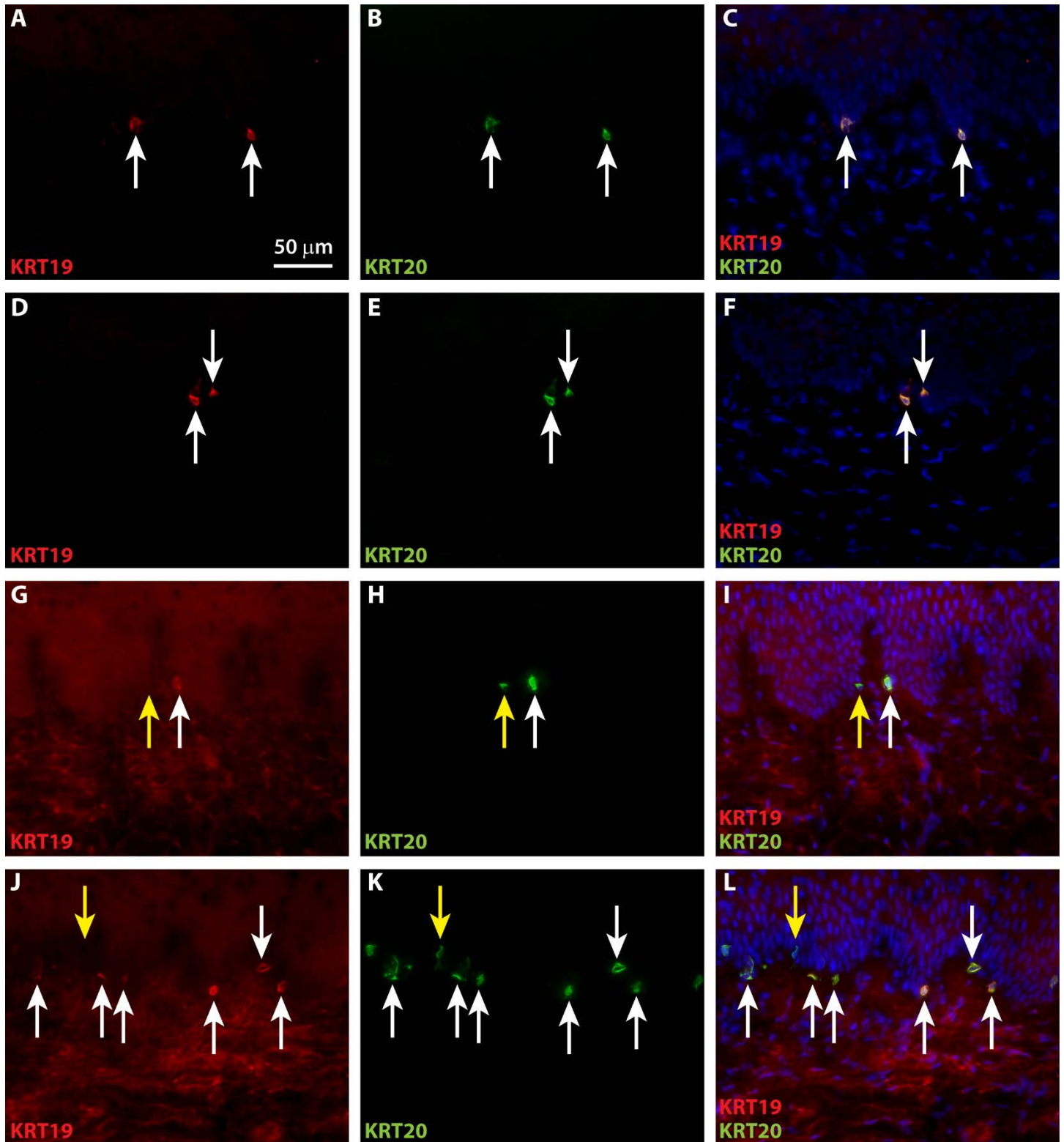


Supporting Information: S4 Figure



S4. Co-localization of KRT19 and KRT20 in Merkel cells in sections of ESS *in vivo*. Shown are sections of ESS excised from mice at 4 weeks (A-C), 6 weeks (D-F), 8 weeks (G-I), and 12 weeks (J-L) after grafting to mice. Immunohistochemistry was performed using antibodies against KRT19 (red) and KRT20 (green); DAPI was used to counterstain nuclei (C, F, I, L; blue). Each row depicts images of a single representative section. White arrows indicate examples of cells staining positive for both KRT19 and KRT20; yellow arrows indicate KRT20-positive cells that do not appear to express KRT19. Scale bar in A is for all sections (50 μm).