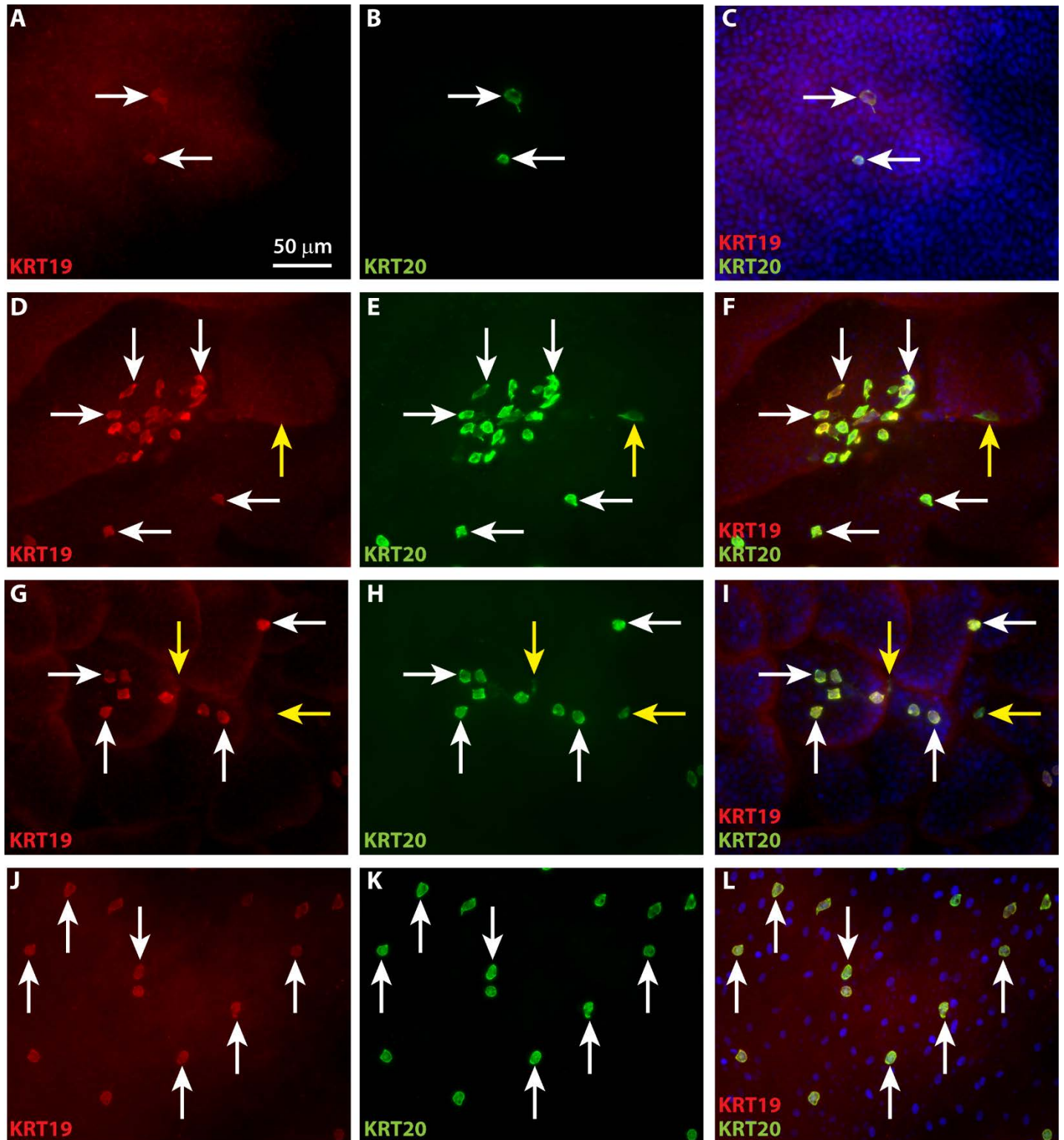


Supporting Information: S5 Figure



**S5. Co-localization of KRT19 and KRT20 in Merkel cells in ESS epidermal sheets.** Shown are epidermal sheets of ESS excised from mice at 2 weeks (A-C), 8 weeks (D-F), and 14 weeks (G-I), and epidermal sheets of normal human skin (J-L), stained using antibodies against KRT19 (red) and KRT20 (green); DAPI was used to counterstain nuclei (C, F, I, L; blue). Each row depicts three images of the same representative microscopic field. White arrows indicate examples of cells staining positive for both KRT19 and KRT20; yellow arrows indicate KRT20-positive cells that do not appear to express KRT19. Scale bar in A is for all sections (50  $\mu$ m).