

Supporting Information

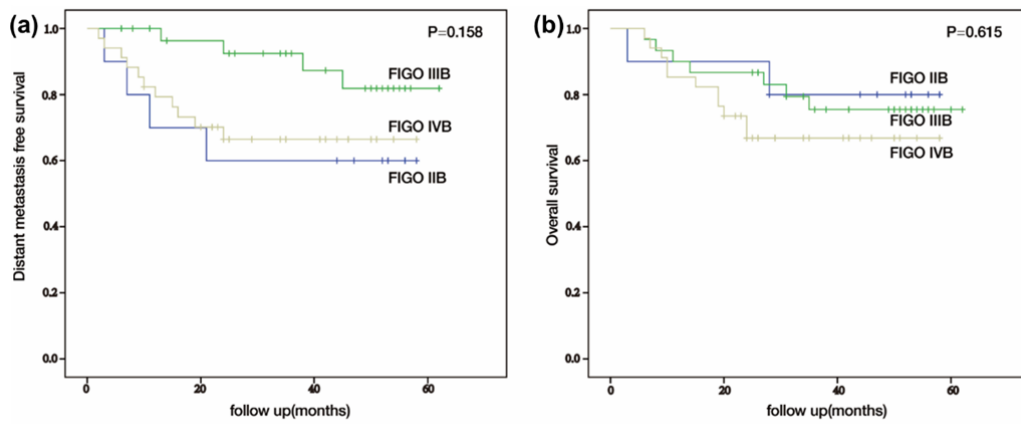


Figure S1. Clinical outcomes of intensity-modulated radiotherapy with a simultaneous integrated boost for the definitive management of node-positive cervical cancer. (a) DFS for patients with either stage IIB, IIIB or IVB cervical cancer. (b) OS for patients with either FIGO stage IIB, IIIB or IVB cervical cancer.

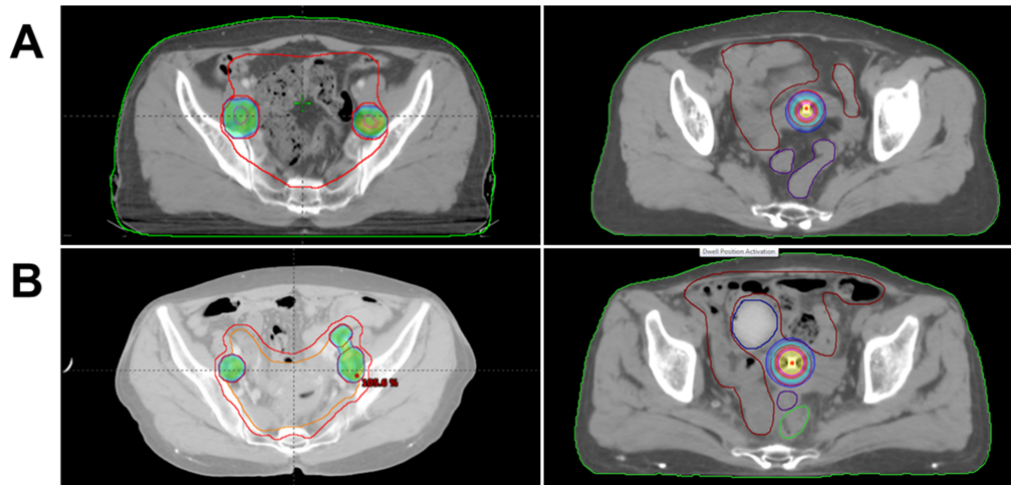


Figure S2. Representative arc-based image-guided intensity-modulated radiation therapy (IG-IMRT) and brachytherapy dose distribution in the sample patient. (A) Patient 1, (B) Patient 2.