

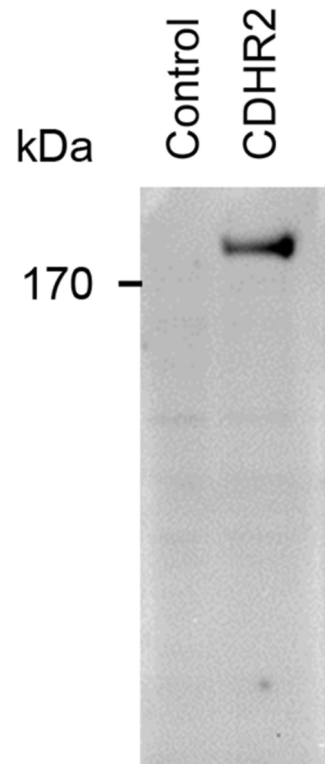
Supplementary Table 1
Clinical Characteristics of 24 Patients With HCC According to CDHR2 Protein
Expression Levels by Semi-quantitative PCR

Feature	CDHR2		P
	Negative, n	Positive, n	
Age			0.961
<60 y	15	4	
≥60 y	4	1	
Gender			0.014
Male	17	2	
Female	2	3	
HBV			0.619
Negative	1	0	
Positive	18	5	
AFP level			0.902
<400ng/mL	12	3	
≥400ng/mL	6	2	
Size			0.780
<5cm	10	3	
≥5cm	9	2	
TNM			0.786
1	11	3	
2	2	1	
3	5	1	
4	1	0	

Supplementary Table 2
Clinical Characteristics of 111 Patients With HCC According to CDHR2 Protein
Expression Levels by IHC

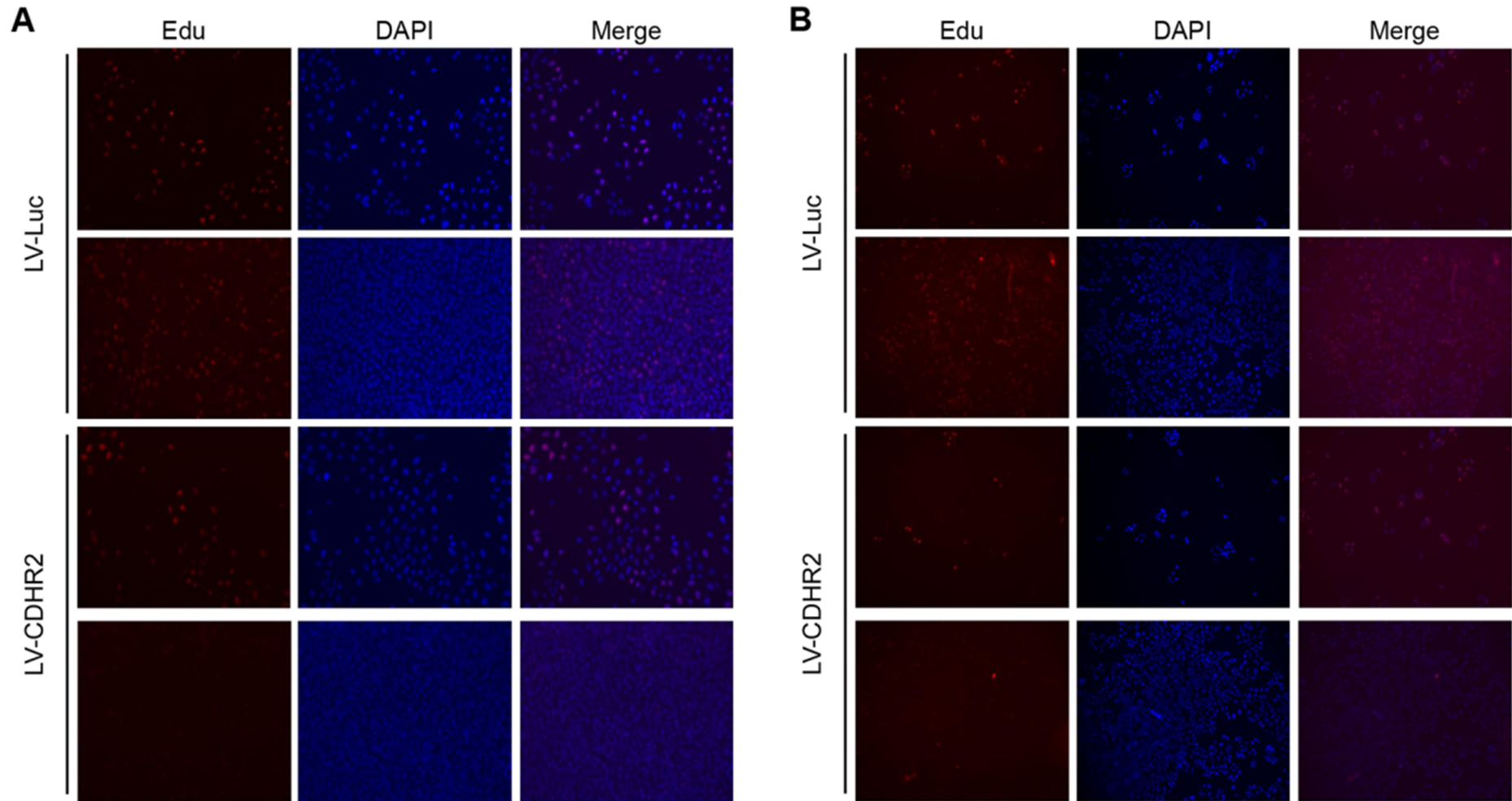
Feature	CDHR2		P
	Negative, n	Positive, n	
Age			0.427
<60 y	61	17	
≥60 y	28	5	
Gender			0.477
Male	71	16	
Female	18	6	
HBV			0.387
Negative	3	0	
Positive	86	22	
AFP level			0.466
<400ng/mL	60	13	
≥400ng/mL	29	9	
Size			0.221
<5cm	37	6	
≥5cm	52	16	
TNM			0.476
1	71	18	
2	6	2	
3	12	1	
4	0	0	

Supplementary Figures



Supplementary Figure 1 Validation of specificity of antibody against CDHR2.

SMMC-7721-CDHR2 cell extracts were collected and western blot was performed with a polyclonal antibody purified from rabbit immunized with a synthetic peptide derived from C-terminal of CDHR2 protein. SMMC-7721 cell extracts used as control.



Supplementary Figure 2 Edu incorporation assay to evaluate the proliferation rate.

Edu incorporation assay to evaluate the proliferation rate of SMMC-7721 (A) and PLC/PRF/5 (B) cells infected with LV-CDHR2 compared with LV-Luc. Upper, sparse cultures; lower, confluent cultures.