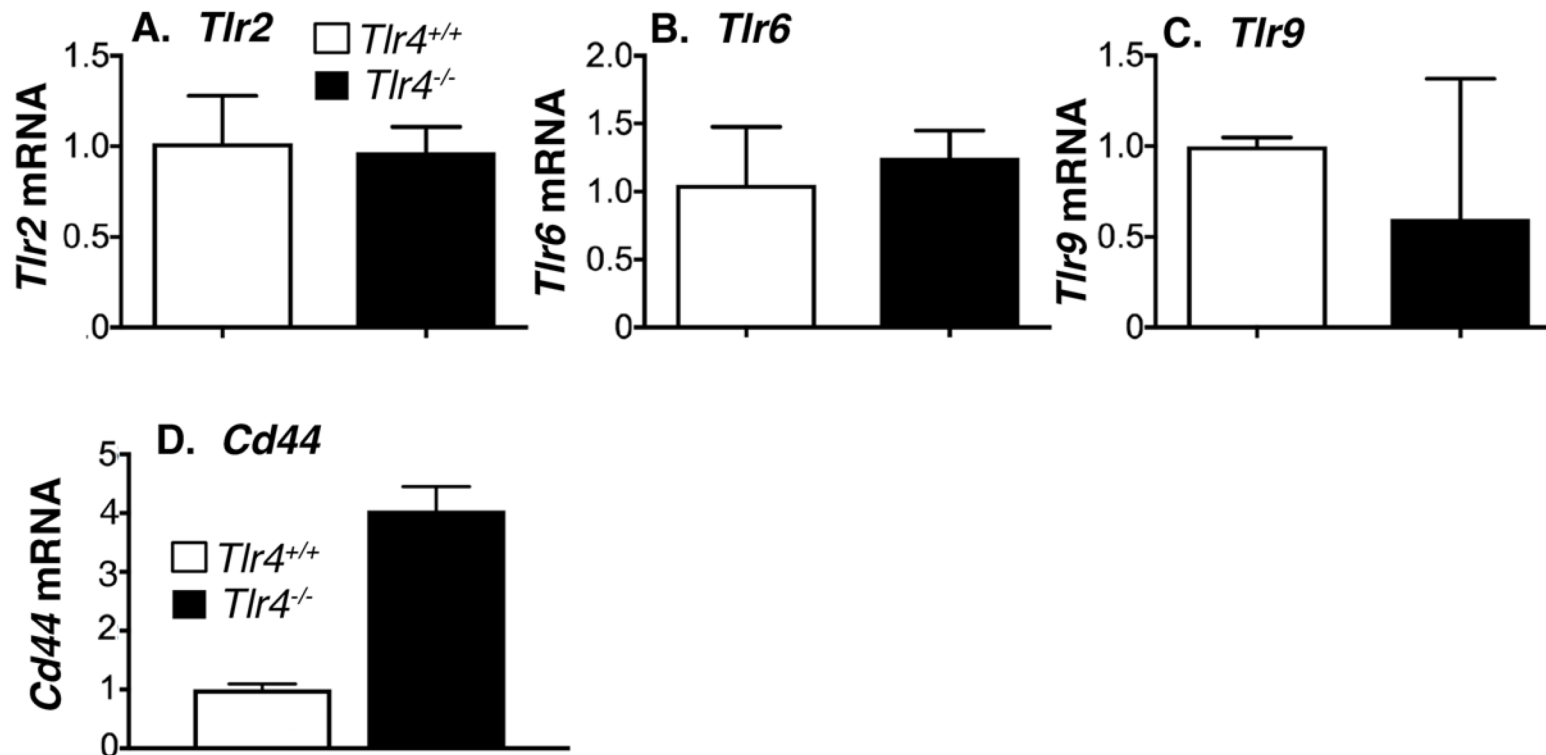
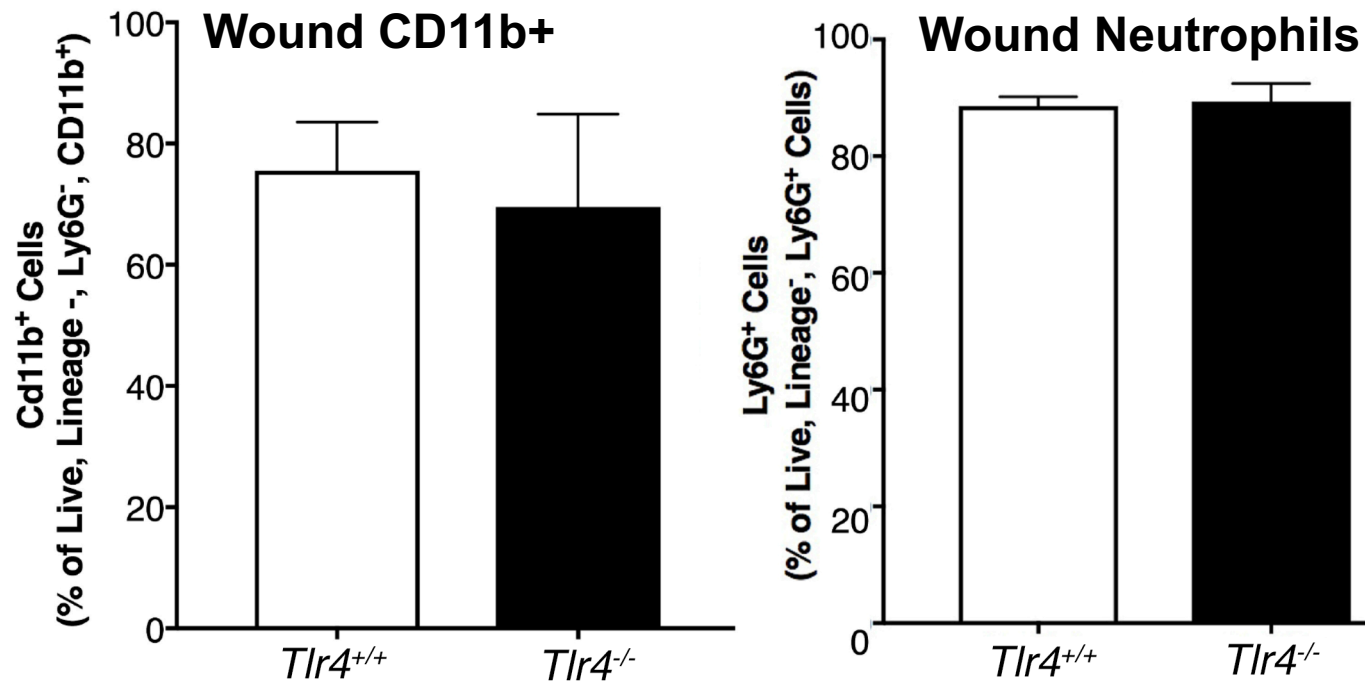


Supplemental Figure 1



Supplemental Figure 1. *Tlr2*, *Tlr6*, *Tlr9*, and *Cd44* expression is similar in *Tlr4*^{-/-} and control wound myeloid cells. A-D. C57BL/6 mice were wounded using a 4 mm punch biopsy and wound myeloid cells CD11b⁺[CD3⁻CD19⁻Ly6G⁻] were isolated on post wounding day 3 using MACS. *Tlr2*, *Tlr6*, *Tlr9* and *Cd44* gene expression was compared between *Tlr4*^{-/-} mice and controls (n=5, repeated 2X in triplicate). All data are expressed as the mean ± the standard error of the means (SEM).

Supplemental Figure 2



Supplemental Figure 2. Myeloid cells and neutrophils are similar in *Tlr4*^{-/-} and control wounds. Wounds were created using a 4mm punch biopsy on the back of male C57BL/6 mice. Wounds were harvested on day 3 postinjury and analyzed by flow cytometry. A: The percentage of Live, lin⁻, Ly6G⁻, CD11b⁺ cells in *Tlr4*^{-/-} and littermate controls is shown. B: The percentage of Live, lin⁻, Ly6G⁺ cells in *Tlr4*^{-/-} and littermate controls is shown (Data is representative of two independent experiments with n=4 per experiment). All data are expressed as the mean ± the standard error of the means (SEM).