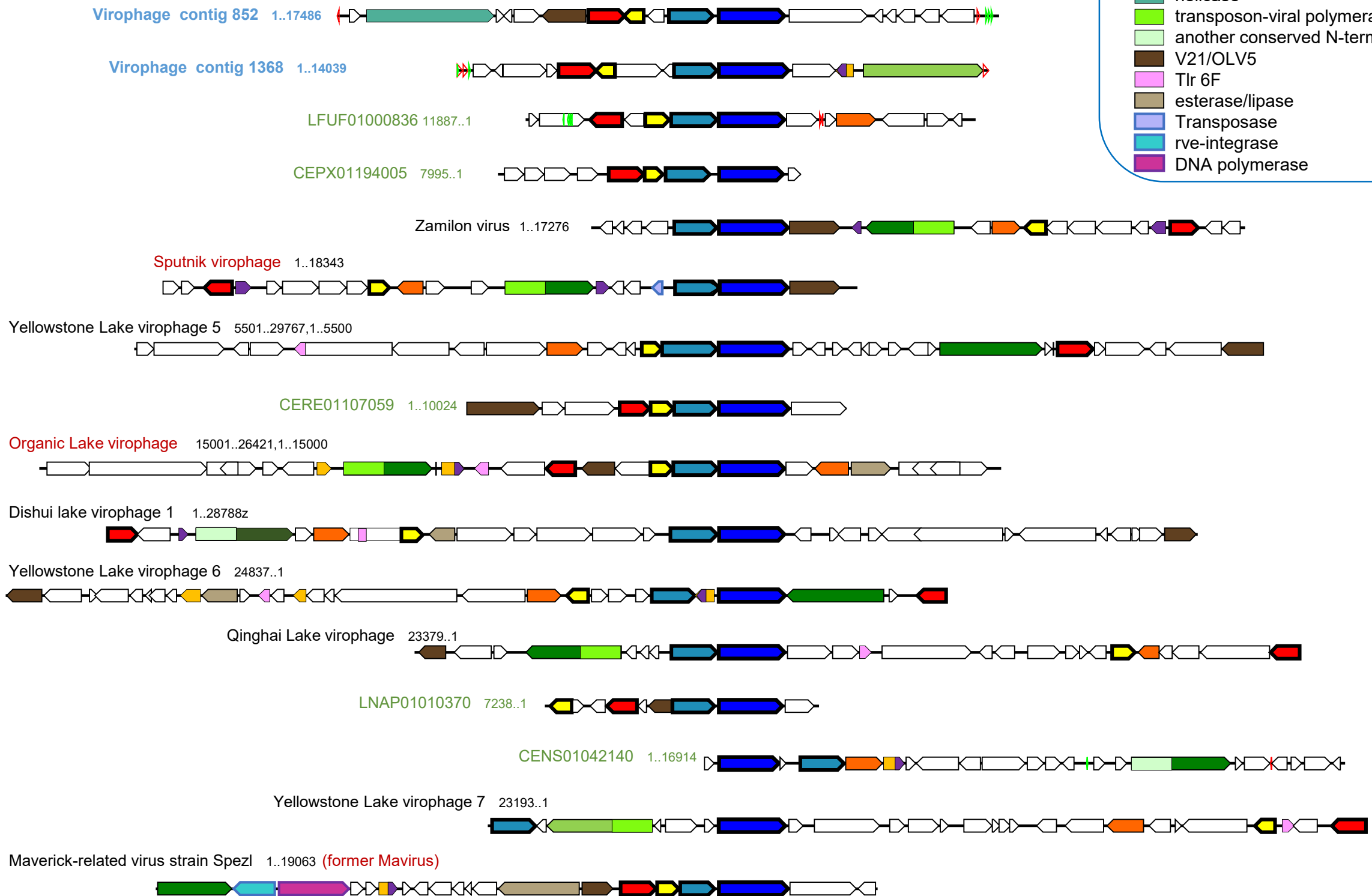


Genome maps of Loki Castle virophages (contig names are in blue), some environmental virophages (wgs; contig names are in green), and reference virophages from GenBank. Green and blue triangles mark direct and inverse repeats. Pentagons with thicker outline represent conserved virophage genes.

- major capsid protein (MCP)
- minor capsid protein (mCP)
- packaging ATPase
- cysteine protease
- tyrosine recombinase
- GIY-YIG family nuclease
- Zn-ribbon domain (ZnR)
- superfamily 3 helicase
- replication origin-binding helicase
- D5 family helicase
- helicase
- transposon-viral polymerase (TVpol)
- another conserved N-term. of helicase
- V21/OLV5
- Tlr 6F
- esterase/lipase
- Transposase
- rve-integrase
- DNA polymerase



1000 nt