

This file contains meme motif search results for Loki Castle Viruses of Mimivirus group, and for Loki Castle Virophages

The 'upstream' regions are from -250 to 30 nt related to the start codon; the regions shorter than 50 nt are filtered out

Meme search was set to 25 nt of motif width

Upstream region sequences and meme output files can be found at:
ftp://ftp.ncbi.nih.gov/pub/yutinn/Loki_Castle_NCLDV_2018/meme_motif_search

Conserved motifs AAA(T/A)TGA are marked with the 'sun' sign
Conserved AT-rich motifs are marked with the 'moon' sign

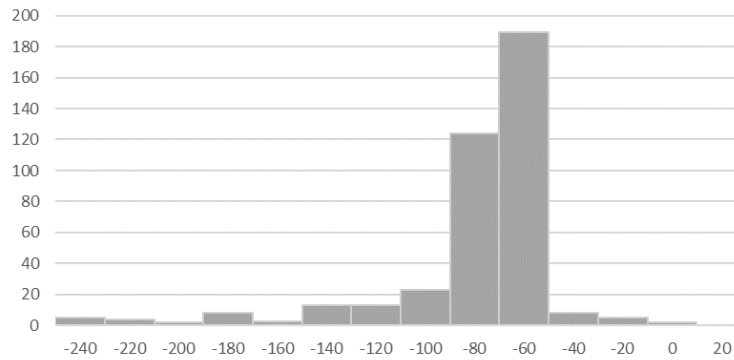
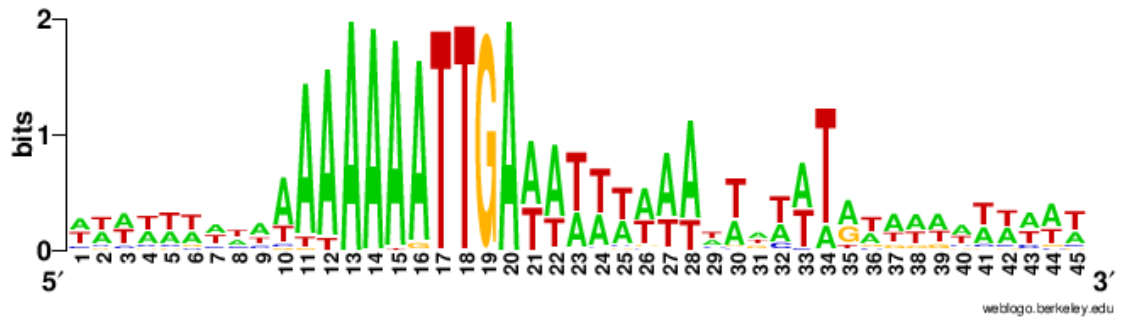
note: on all Logo images, the detected motif starts from position #11

LCMiAC01, LCMiAC02

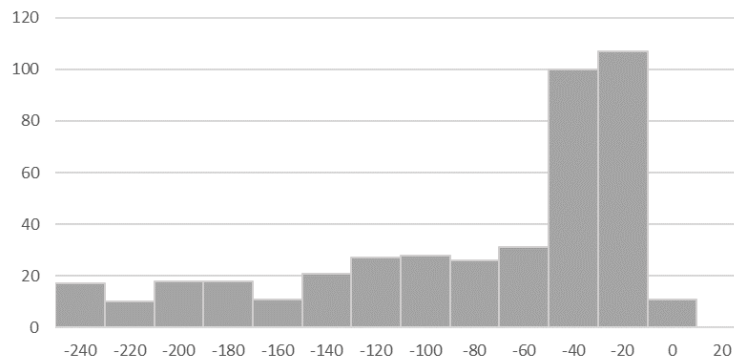
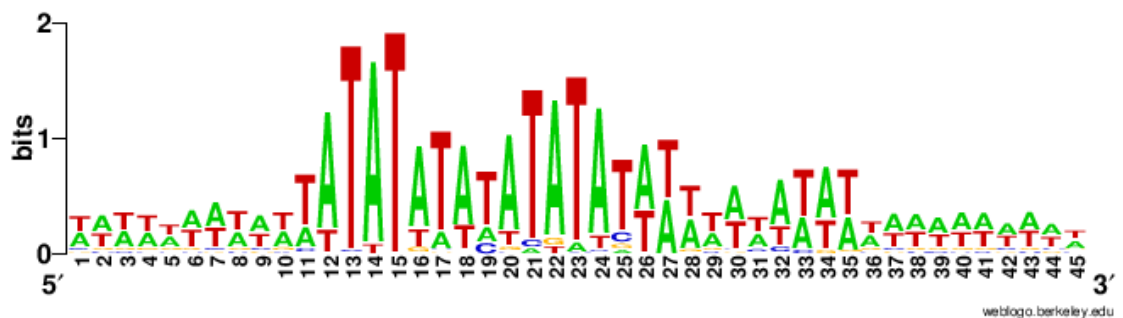
1130 fragments



Motif #3 (399 sites)



Motif #4 (425 sites)

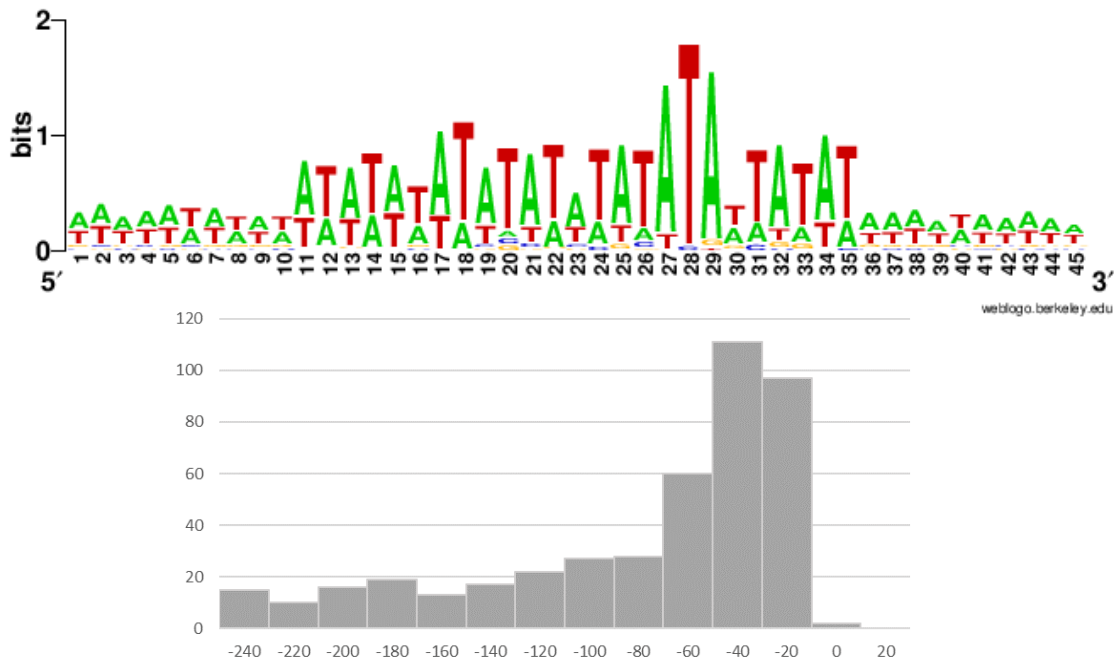


LCMiAC01

566 fragments



Motif #2 (437 sites)

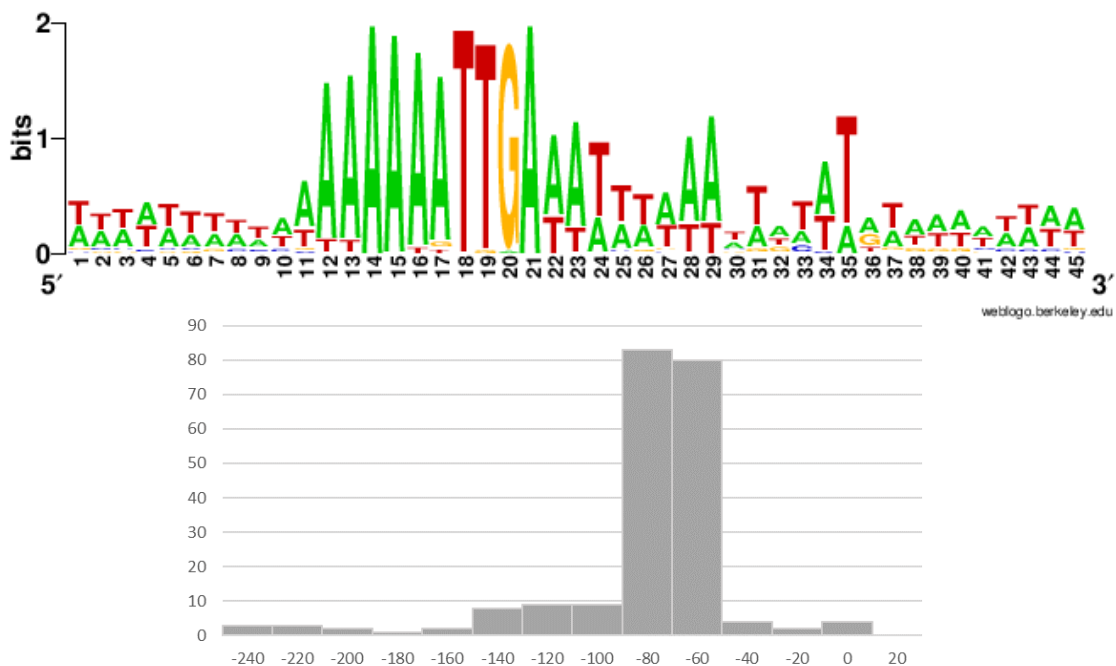


LCMiAC02

564 fragments

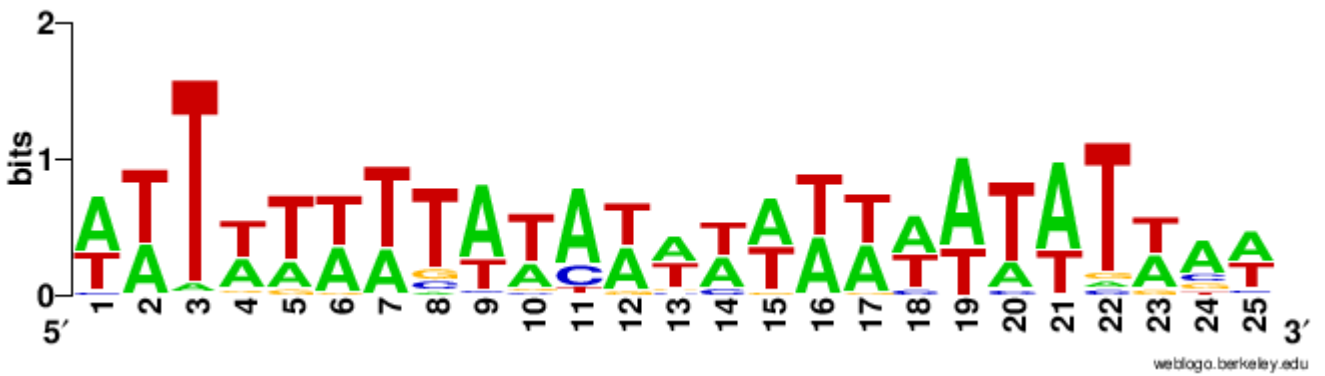


Motif #1 (223 sites)



Viro 1368 and viro 852 conserved motifs vs MiAC upstream regions (by FIMO)

Viro 1368



Viro 852

