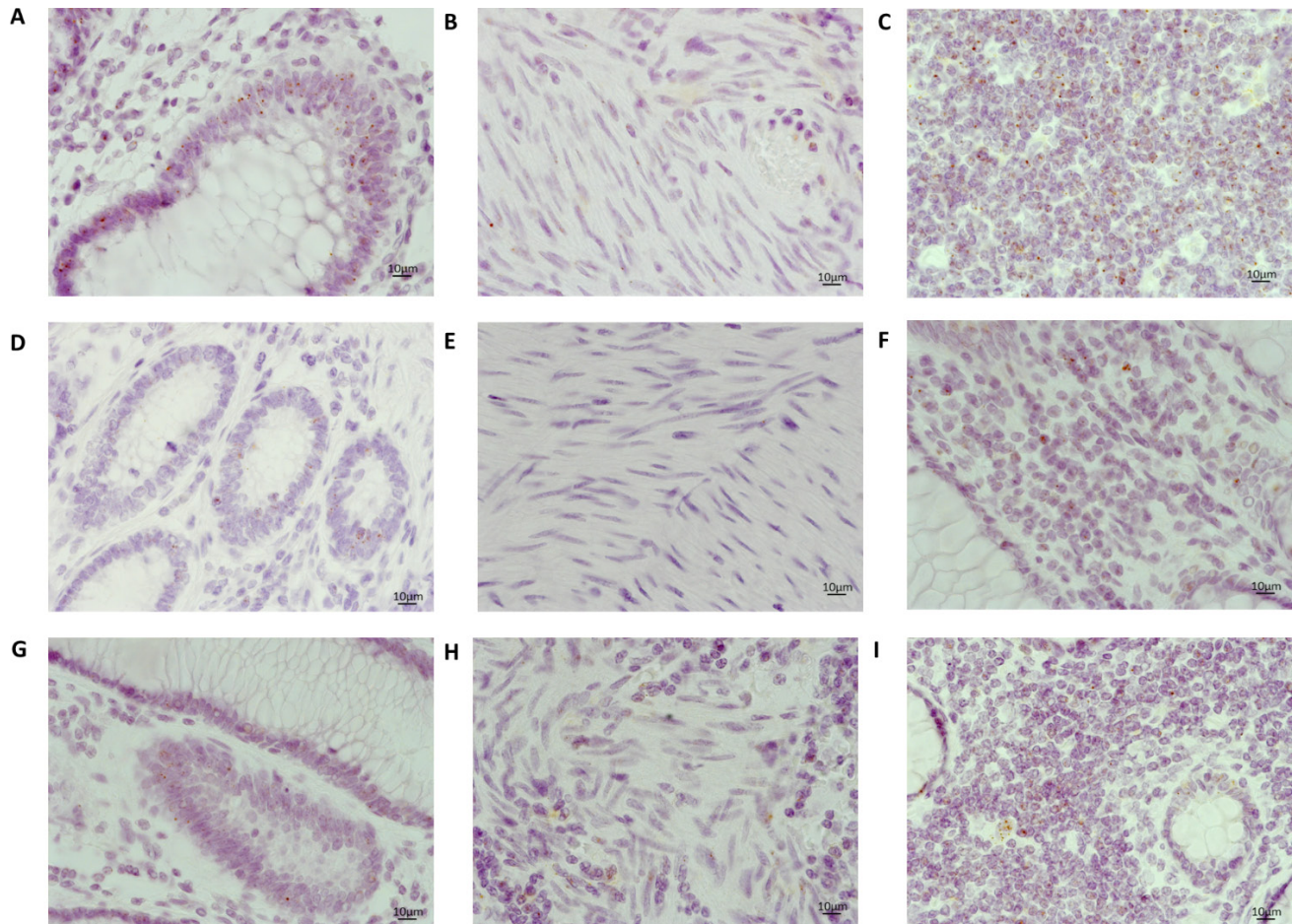


Assessment of intra-tumoural colorectal cancer prognostic biomarkers using RNA *in situ* hybridisation

SUPPLEMENTARY MATERIALS



Supplementary Figure 1: Representative images of mRNA expression using RNAscope® on FFPE whole tissue section in different cell types from colorectal cancer cases at 40× magnification (**A**) *MLH1* in normal epithelial cells (**B**) *MLH1* in stromal cells (**C**) *MLH1* in lymphoid cells (**D**) *GFII* in normal epithelial cells (**E**) *GFII* in stromal cells (**F**) *GFII* in lymphoid epithelial cells (**G**) *TNFRSF11A* in normal epithelial cells (**H**) *TNFRSF11A* in stromal cells (**I**) *TNFRSF11A* in lymphoid cells.