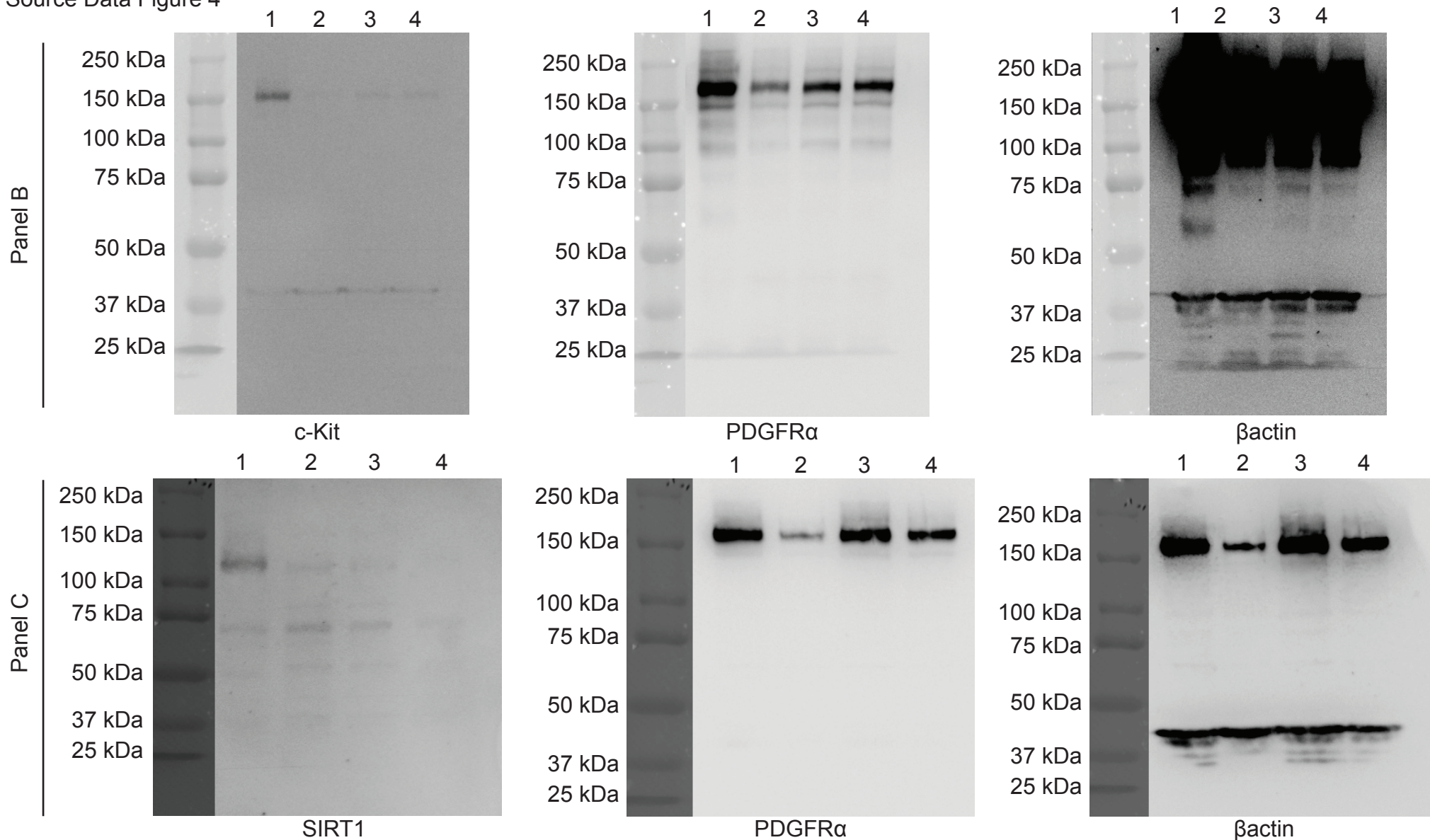


Source Data Figure 4



Procedure for alignment of protein ladder and immunoblot: The entire blot was digitally captured under white-light illumination (where the colored protein molecular mass marker ladder was visualized), and digitally captured again for chemiluminescent detection (for immunoblot bands). The blot contours were used to align the protein ladder alongside the immunoblot bands, as described graphically in the source data file for Figure 3.