

SUPPLEMENTARY FIGURES

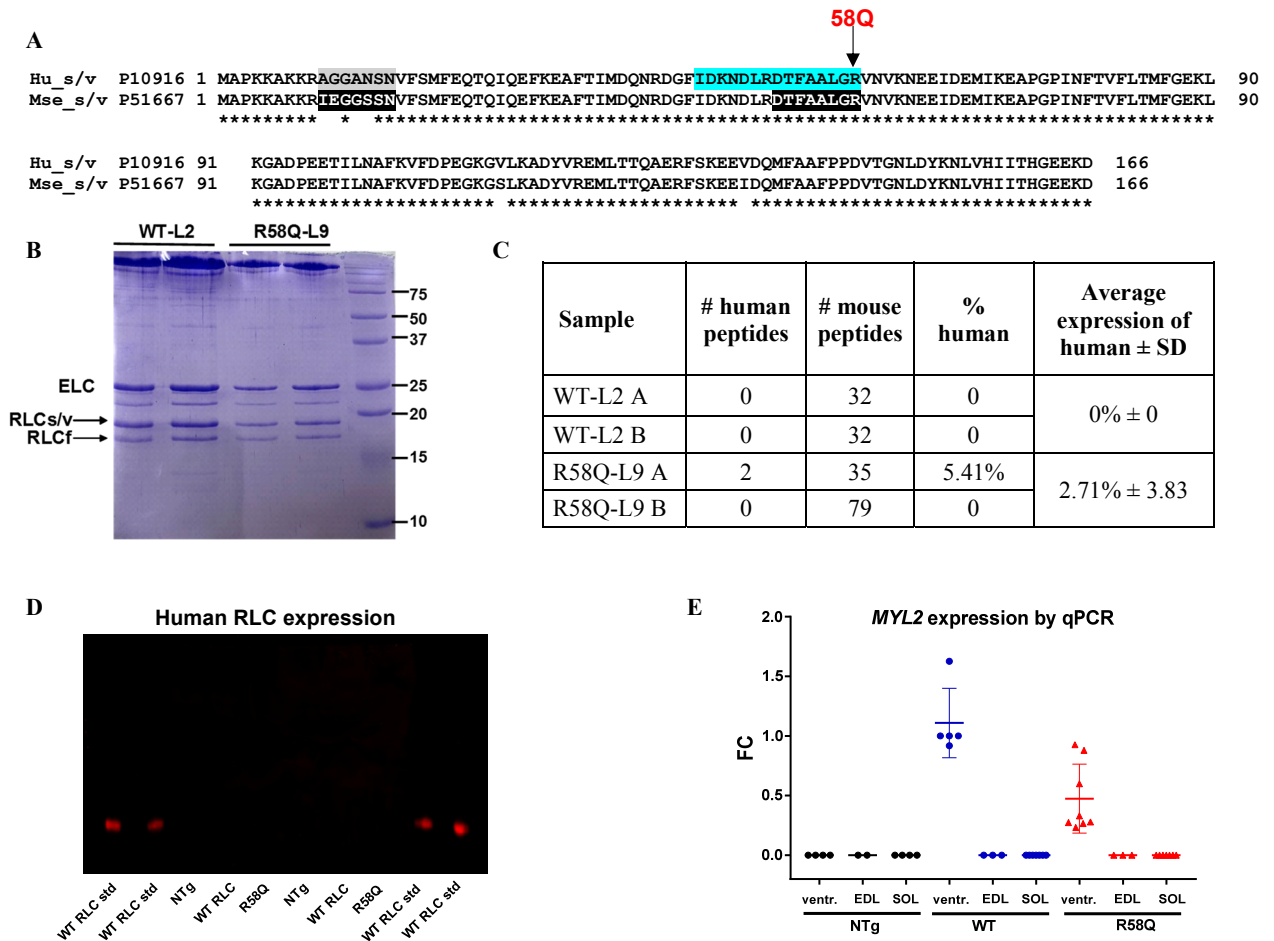


Figure S1. **A.** The amino acid sequence alignment of human (P10916) and mouse (P51667) ventricular/slow-twitch skeletal RLC with highlighted human (gray) and mouse (black) specific peptides. **B.** SDS-PAGE of soleus (SOL) muscle-purified myosin showing two RLC bands corresponding to mouse RLCs/v and RLCf (fast skeletal isoform). **C.** The number of identified mouse-specific RLC peptides (containing residues IEGGSSN) and human-specific RLC peptides (AGGANSN). No R58Q-containing peptides (AALGQ) in the upper band was found (cyan) while the mouse AALGR peptide was readily detected. **D.** Western blot of mouse serum reacted with RLC-specific antibodies (CT-1) of NTg (non-Tg), WT and R58Q mice. WT-RLC standard protein was used as a positive control. **E.** Expression (by qPCR) of human *MYL2* in ventricles, EDL and SOL muscles of NTg, WT and R58Q mice, presented as fold-change (FC) compared to NTg mice.