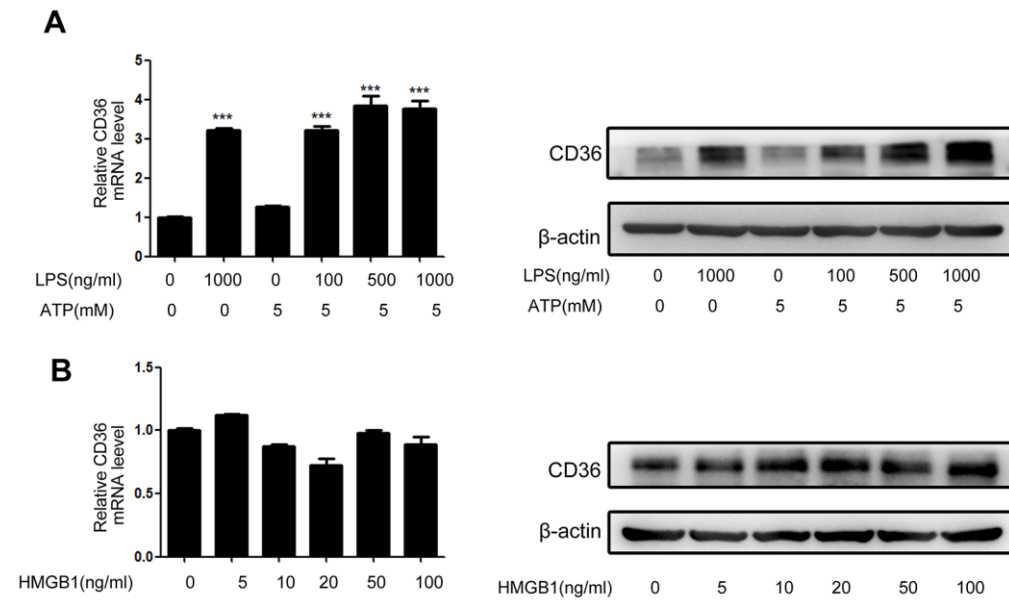


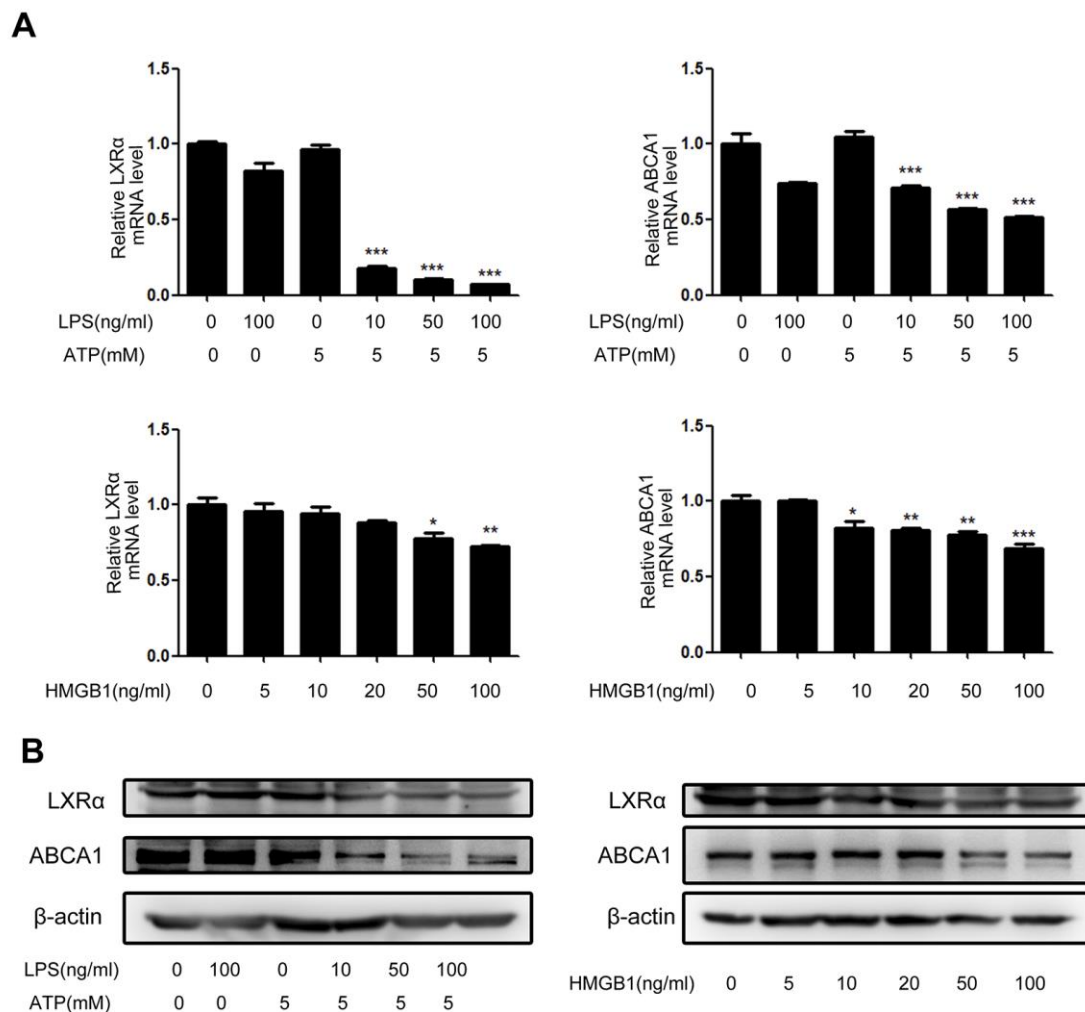
# **SUPPLEMENTAL MATERIAL**

**Figure S1. NLRP3 inflammasome activation and HMGB1 in regulating CD36 expression in VSMCs.**



Treatment with LPS/ATP stimulation or HMGB1, the relative levels of CD36 expression were determined qRT-PCR and Western blot. Data are representative images or expressed as the mean  $\pm$  SD of each group from three separated experiments (Western blot) or three separated experiments with three duplicated wells (qRT-PCR). (A) qRT-PCR analysis of CD36 mRNA transcripts. (B) Western blot analysis of CD36 proteins. \* $P < 0.05$ , \*\* $P < 0.01$ , \*\*\* $P < 0.001$  the control. NLRP3, The Nod like receptor family, pyrin domain-containing 3 protein; HMGB1, high mobility group box-1 protein; VSMC, vascular smooth muscle cell; qRT-PCR, Quantitative real-time polymerase chain reaction; mRNA, messenger RNA.

**Figure S2. NLRP3 inflammasome activation and HMGB1 in regulating LXR $\alpha$  and ABCA1 expression in macrophages.**



Treatment with LPS/ATP stimulation or HMGB1, the relative levels of LXR $\alpha$  and ABCA1 expression were determined qRT-PCR and Western blot. Data are representative images or expressed as the mean  $\pm$  SD of each group from three separated experiments (Western blot) or three separated experiments with three duplicated wells (qRT-PCR). (A) qRT-PCR analysis of LXR $\alpha$  and ABCA1 mRNA transcripts. (B) Western blot analysis of LXR $\alpha$  and ABCA1 proteins. \* $P$ <0.05, \*\* $P$ <0.01, \*\*\* $P$ <0.001 the control. NLRP3, The Nod like receptor family, pyrin domain-containing 3 protein; HMGB1, high mobility group box-1 protein; LXR $\alpha$ , Liver X receptor  $\alpha$ ; ABCA1 ATP-binding cassette transporter 1; LPS, Lipopolysaccharides; ATP, adenosine triphosphate; qRT-PCR, Quantitative real-time polymerase chain reaction;