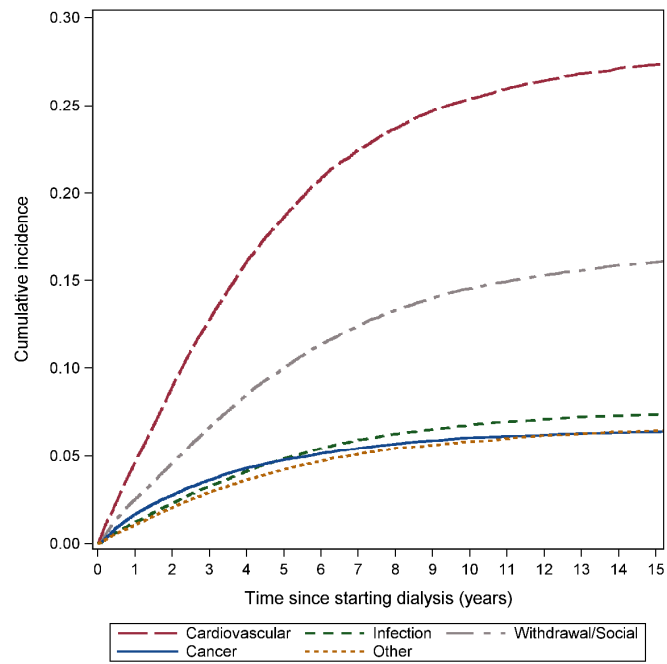


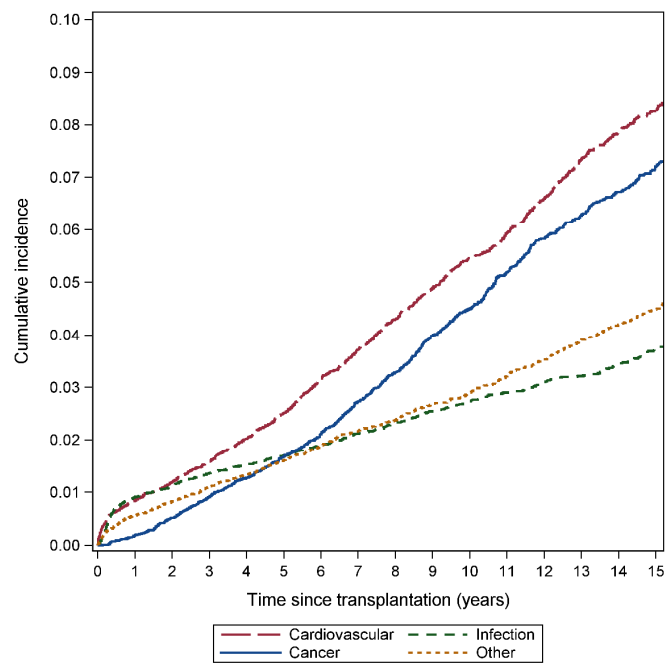
Supplementary Figures:

- 1A) Cumulative incidence for different causes of death – dialysis
- 1B) Cumulative incidence for different causes of death – transplant
- 2A) Cumulative incidence for different causes of death – dialysis (excluding pre-existing cancer)
- 2B) Cumulative incidence for different causes of death – transplant (excluding pre-existing cancer)
- 3A) Cumulative incidence of most common cancer deaths – dialysis (excluding pre-existing cancers)
- 3B) Cumulative incidence of most common cancer deaths – transplant (excluding pre-existing cancers)
- 4A) Cancer mortality rate and SMR by cancer type – dialysis (excluding pre-existing cancers)
- 4B) Cancer mortality rate and SMR by cancer type – transplant (excluding pre-existing cancers)
- 5A) Cancer incidence rate and SIR by cancer type – dialysis
- 5B) Cancer incidence rate and SIR by cancer type – transplant

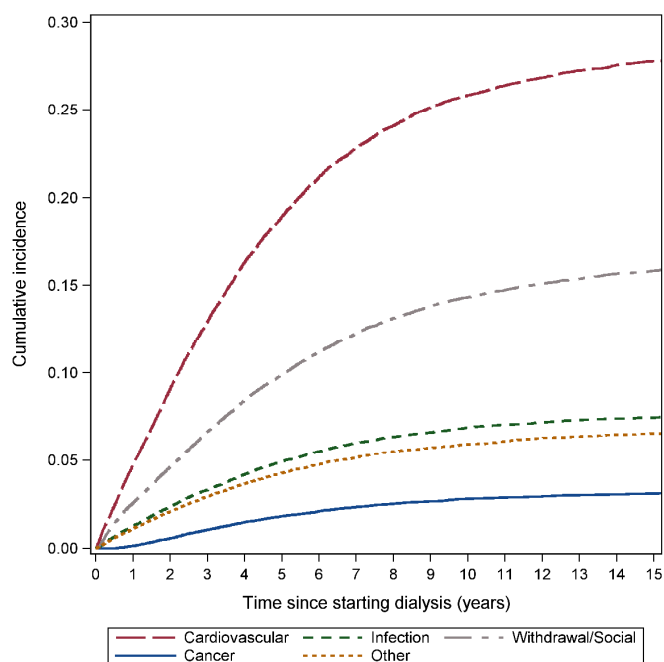
Supplementary Figure 1A: Cumulative incidence for different causes of death - dialysis



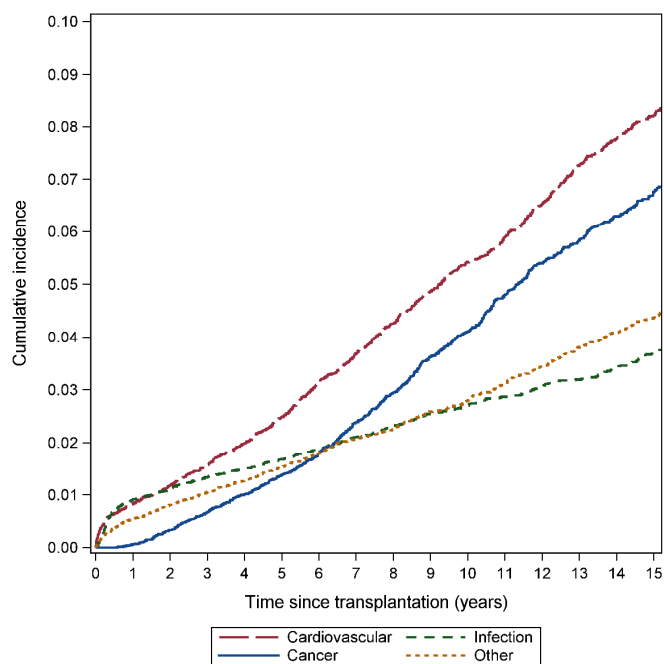
Supplementary Figure 1B: Cumulative incidence for different causes of death - transplant



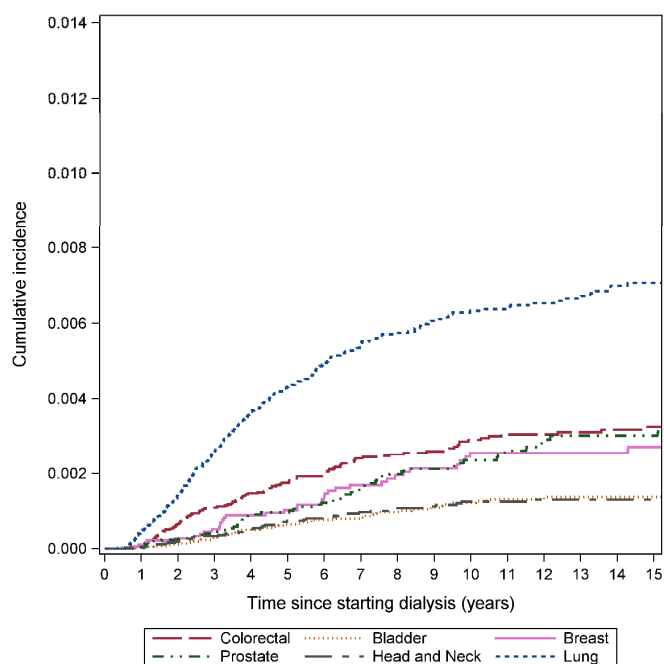
Supplementary Figure 2A: Cumulative incidence for different causes of death – dialysis (excluding pre-existing cancers)



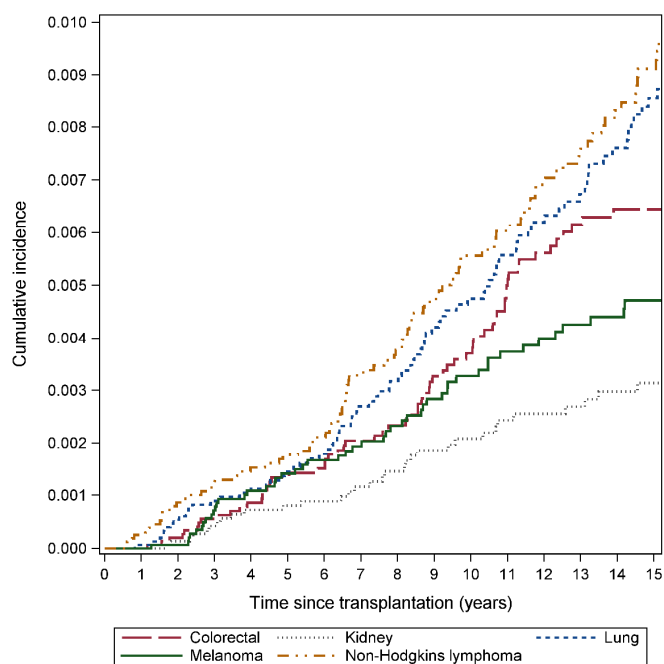
Supplementary Figure 2B: Cumulative incidence for different causes of death – transplant (excluding pre-existing cancers)



Supplementary Figure 3A: Cumulative incidence of most common cancer deaths – dialysis (excluding pre-existing cancers)

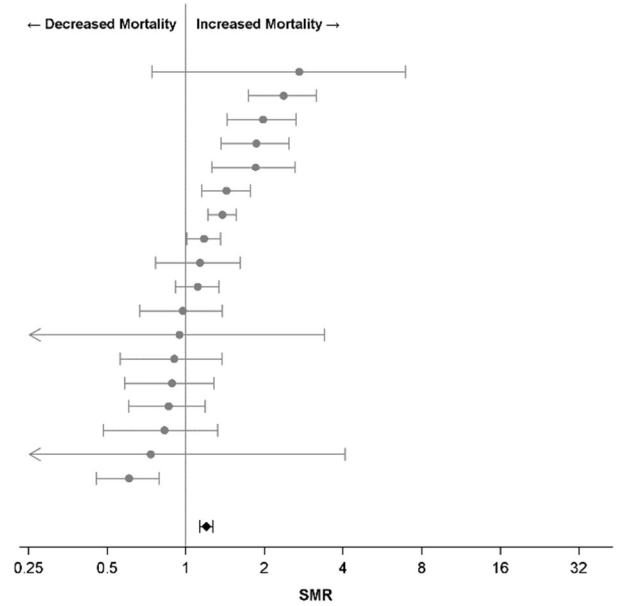


Supplementary Figure 3B: Cumulative incidence of most common cancer deaths – transplant (excluding pre-existing cancers)



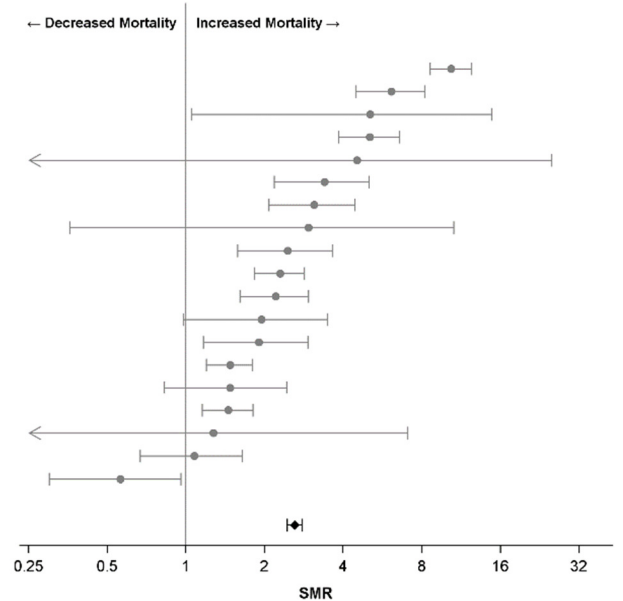
Supplementary Figure 4A: Cancer mortality rate and SMR by cancer type – dialysis (excluding pre-existing cancers)

Cancer Type	Mortality Rate (per 100,000 pt-yrs)	SRD	95% CI	SMR	95% CI
Bone	3	1	(0 - 4)	2.7	(0.7 - 7.0)
Kidney	30	7	(4 - 12)	2.4	(1.7 - 3.2)
Head and Neck	29	7	(3 - 11)	2.0	(1.4 - 2.7)
Bladder	30	5	(2 - 9)	1.9	(1.4 - 2.5)
Multiple Myeloma	20	4	(1 - 7)	1.8	(1.3 - 2.6)
Unknown Primary	56	7	(2 - 13)	1.4	(1.1 - 1.8)
Lung	161	19	(11 - 28)	1.4	(1.2 - 1.6)
Other Gastrointestinal	113	7	(0 - 15)	1.2	(1.0 - 1.4)
Melanoma	20	1	(-2 - 5)	1.1	(0.8 - 1.6)
Colorectal	71	3	(-3 - 11)	1.1	(0.9 - 1.3)
Non-Hogkin Lymphoma	20	0	(-3 - 4)	1.0	(0.7 - 1.4)
Thyroid	1	0	(-1 - 2)	0.9	(0.1 - 3.4)
Gynaecological	32	-2	(-9 - 7)	0.9	(0.6 - 1.4)
Leukaemia	18	-1	(-4 - 2)	0.9	(0.6 - 1.3)
Breast	55	-5	(-15 - 7)	0.9	(0.6 - 1.2)
Brain	11	-1	(-4 - 2)	0.8	(0.5 - 1.3)
Hodgkin Lymphoma	1	0	(-1 - 2)	0.7	(<0.1 - 4.1)
Prostate	61	-15	(-20 - -8)	0.6	(0.5 - 0.8)
All Cancers	700	51	(33 - 71)	1.2	(1.1 - 1.3)



Supplementary Figure 4B: Cancer mortality rate and SMR by cancer type – transplant (excluding pre-existing cancers)

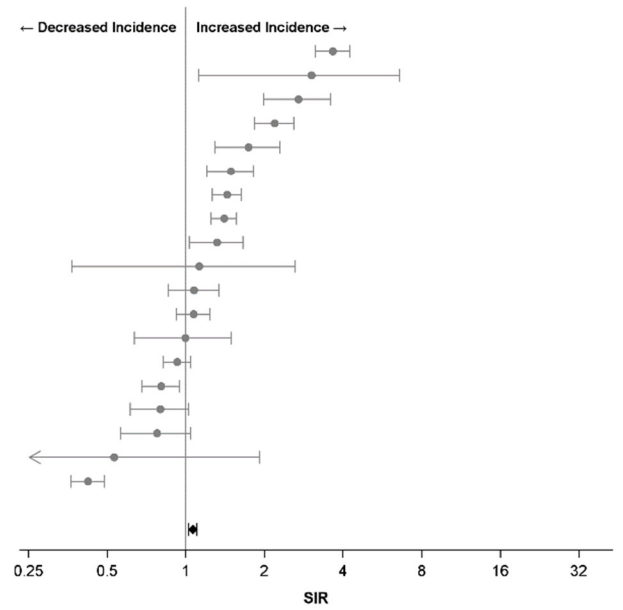
Cancer Type	Mortality Rate (per 100,000 pt-yrs)	SRD	95% CI	SMR	95% CI
Non-Hogkin Lymphoma	95	88	(71 - 107)	10.4	(8.6 - 12.4)
Kidney	35	28	(19 - 40)	6.1	(4.5 - 8.2)
Hodgkin Lymphoma	2	2	(0 - 8)	5.1	(1.0 - 14.9)
Melanoma	45	31	(21 - 42)	5.1	(3.8 - 6.6)
Testicular	1	1	(0 - 9)	4.5	(0.1 - 25.2)
Bladder	19	15	(7 - 25)	3.4	(2.2 - 5.1)
Head and Neck	23	14	(7 - 24)	3.1	(2.1 - 4.4)
Bone	2	1	(0 - 6)	3.0	(0.4 - 10.7)
Gynaecological	48	29	(11 - 52)	2.5	(1.6 - 3.7)
Colorectal	65	41	(26 - 59)	2.3	(1.8 - 2.9)
Unknown Primary	35	20	(10 - 32)	2.2	(1.6 - 3.0)
Multiple Myeloma	9	4	(0 - 11)	1.9	(1.0 - 3.5)
Leukaemia	16	8	(1 - 16)	1.9	(1.2 - 2.9)
Lung	76	24	(10 - 41)	1.5	(1.2 - 1.8)
Brain	12	3	(-1 - 10)	1.5	(0.8 - 2.4)
Other Gastrointestinal	63	19	(6 - 33)	1.5	(1.1 - 1.8)
Thyroid	1	0	(-1 - 4)	1.3	(<0.1 - 7.1)
Breast	42	3	(-12 - 24)	1.1	(0.7 - 1.6)
Prostate	18	-16	(-26 - -1)	0.6	(0.3 - 1.0)
All Cancers	673	417	(372 - 465)	2.6	(2.4 - 2.8)



SMR - Standardized Mortality Ratio. SRD - Standardized Rate Difference. SRDs are presented in comparison with the general population. Non-Hodgkin lymphoma includes post-transplant lymphoproliferative disorder. Gynaecological cancers include cervical, uterine and ovarian cancers.

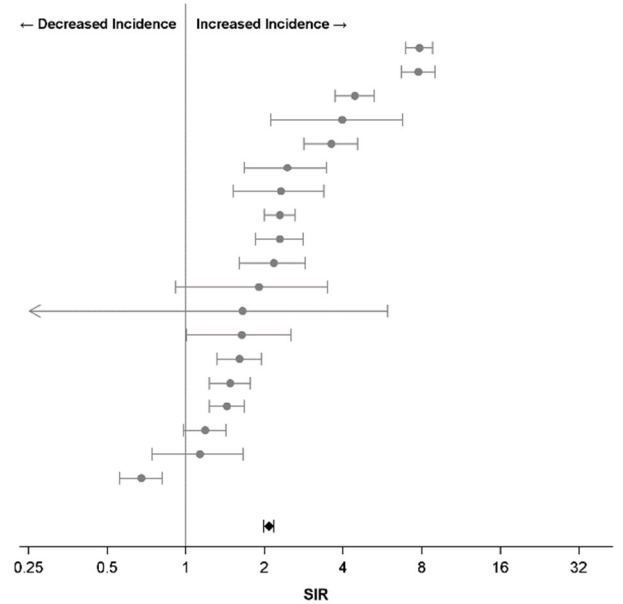
Supplementary Figure 5A: Cancer incidence rate and SIR by cancer type – dialysis

Cancer Type	Incidence Rate (per 100,000 pt-yrs)	SRD	95% CI	SIR	95% CI
Kidney	111	36	(29 - 45)	3.7	(3.1 - 4.3)
Bone	4	2	(0 - 5)	3.0	(1.1 - 6.6)
Thyroid	30	15	(8 - 23)	2.7	(2.0 - 3.6)
Bladder	84	19	(13 - 26)	2.2	(1.8 - 2.6)
Multiple Myeloma	32	6	(2 - 10)	1.7	(1.3 - 2.3)
Unknown Primary	61	10	(4 - 16)	1.5	(1.2 - 1.8)
Other Gastrointestinal	152	20	(12 - 29)	1.4	(1.3 - 1.6)
Lung	202	25	(15 - 35)	1.4	(1.2 - 1.6)
Gynaecological	109	16	(1 - 34)	1.3	(1.0 - 1.7)
Hodgkin Lymphoma	3	0	(-2 - 4)	1.1	(0.4 - 2.6)
Head and Neck	53	2	(-4 - 9)	1.1	(0.9 - 1.3)
Breast	266	11	(-13 - 37)	1.1	(0.9 - 1.2)
Brain	15	0	(-3 - 4)	1.0	(0.6 - 1.5)
Colorectal	174	-6	(-16 - 4)	0.9	(0.8 - 1.0)
Melanoma	92	-12	(-20 - -3)	0.8	(0.7 - 0.9)
Non-Hodgkin Lymphoma	40	-5	(-9 - 1)	0.8	(0.6 - 1.0)
Leukaemia	28	-4	(-7 - 1)	0.8	(0.6 - 1.0)
Testicular	2	-4	(-7 - 7)	0.5	(0.1 - 1.9)
Prostate	199	-104	(-115 - -92)	0.4	(0.4 - 0.5)
All Cancers	1423	39	(11 - 68)	1.1	(1.0 - 1.1)



Supplementary Figure 5B: Cancer incidence rate and SIR by cancer type – transplant

Cancer Type	Incidence Rate (per 100,000 pt-yrs)	SRD	95% CI	SIR	95% CI
Non-Hodgkin Lymphoma	218	161	(140 - 184)	7.8	(6.9 - 8.8)
Kidney	140	93	(77 - 110)	7.8	(6.7 - 9.0)
Gynaecological	260	179	(141 - 223)	4.4	(3.7 - 5.3)
Hodgkin Lymphoma	11	8	(3 - 16)	4.0	(2.1 - 6.8)
Bladder	57	42	(29 - 57)	3.6	(2.8 - 4.6)
Thyroid	25	13	(6 - 21)	2.4	(1.7 - 3.5)
Multiple Myeloma	21	10	(4 - 19)	2.3	(1.5 - 3.4)
Melanoma	169	78	(60 - 98)	2.3	(2.0 - 2.6)
Head and Neck	71	32	(21 - 46)	2.3	(1.8 - 2.8)
Unknown Primary	39	23	(12 - 37)	2.2	(1.6 - 2.9)
Testicular	14	7	(-1 - 20)	1.9	(0.9 - 3.5)
Bone	2	1	(-1 - 5)	1.6	(0.2 - 5.9)
Brain	16	5	(0 - 13)	1.6	(1.0 - 2.5)
Other Gastrointestinal	82	28	(14 - 44)	1.6	(1.3 - 2.0)
Lung	98	29	(14 - 47)	1.5	(1.2 - 1.8)
Colorectal	133	37	(19 - 58)	1.4	(1.2 - 1.7)
Breast	225	28	(-4 - 64)	1.2	(1.0 - 1.4)
Leukaemia	21	2	(-4 - 11)	1.1	(0.7 - 1.7)
Prostate	146	-58	(-80 - -33)	0.7	(0.6 - 0.8)
All Cancers	1493	675	(617 - 736)	2.1	(2.0 - 2.2)



SIR - Standardized Incidence Ratio. SRD - Standardized Rate Difference. SRDs are presented in comparison with the general population. Non-Hodgkin lymphoma includes post-transplant lymphoproliferative disorder. Gynaecological cancers include cervical, uterine and ovarian cancers.