

SUPPLEMENTAL MATERIAL

Table S1. Baseline characteristics of Secondary Prevention of Small Subcortical Strokes trial participants included and excluded in cross-sectional analysis.

Characteristic	Included (n=2,967)		Excluded (n=53)		Total (n=3,020)	
	No. or mean	(% or SD)	No. or mean	(% or SD)	No. or mean	(% or SD)
Age, years	62.8	(10.8)	64.3	(10.2)	62.8	(10.8)
Male*	1,861	(62.7)	41	(77.4)	1,902	(63.0)
Race						
White	1,504	(50.7)	34	(64.2)	1,538	(50.9)
Hispanic	903	(30.4)	13	(24.5)	916	(30.3)
Black	486	(16.4)	6	(11.3)	492	(16.3)
Other	74	(2.5)	0	(0.0)	74	(2.5)
Smoking						
Never	1,175	(39.6)	21	(39.6)	1,196	(39.6)
Former	1,185	(39.9)	22	(41.5)	1,207	(40.0)
Current	607	(20.5)	10	(18.9)	617	(20.4)
Diabetes	989	(33.3)	13	(24.5)	1,002	(33.2)
History of hypertension	2,224	(75.0)	40	(75.5)	2,264	(75.0)
Antihypertensive use	2,512	(84.7)	45	(84.9)	2,557	(84.7)
ACE-inhibitor or ARB use	1,988	(67.0)	39	(73.6)	2,027	(67.1)
Statin use	2,043	(68.9)	38	(71.7)	2,081	(68.9)
Prior lacunar stroke**						
Yes	300	(10.1)	8	(15.1)	308	(10.2)
Missing	3	(0.1)	2	(3.8)	5	(0.2)
Total cholesterol, mg/dL	187.9	(47.2)	192.3	(42.2)	187.9	(47.1)
High-density lipoprotein cholesterol, mg/dL	45.4	(18.5)	42.7	(11.7)	45.4	(18.4)
Systolic blood pressure	143.0	(18.9)	141.0	(14.4)	143.0	(18.8)
Body mass index, kg/m ²	29.1	(6.9)	28.7	(5.1)	29.1	(6.8)
eGFR, mL/min/1.73m ² *	80.7	(18.9)	74.7	(19.5)	80.6	(18.9)
eGFR <60	454	(15.3)	11	(20.8)	465	(15.4)
eGFR 60-90	1,501	(50.6)	26	(49.1)	1,527	(50.6)
eGFR >90	1,012	(34.1)	13	(24.5)	1,025	(33.9)
Missing	0	(0.0)	3	(5.7)	3	(0.1)
White matter hyperintensities score	5.5	(4.1)	2.0	(0.0)	5.5	(4.1)
Missing	0	(0.0)	50	(94.3)	50	(1.7)
Systolic blood pressure target <130	1,478	(49.8)	23	(43.4)	1,501	(49.7)

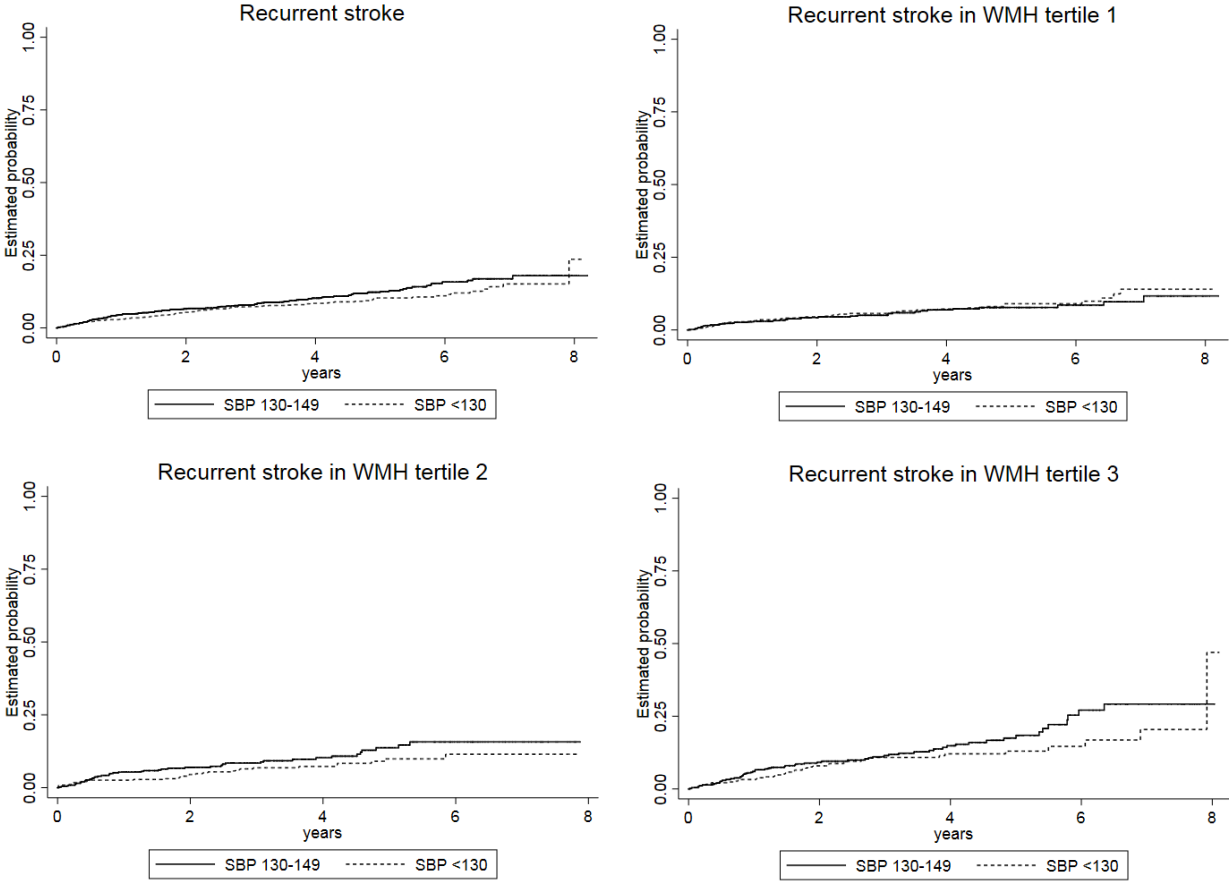
Differences in distribution of categorical variables and means of continuous variables tested using chi-squared and t-test, respectively. * = p for statistical test < 0.05, ** = p < 0.0005. SD = standard deviation, ACE = angiotensin-converting enzyme, ARB = angiotensin receptor blocker, eGFR = estimated glomerular filtration rate

Table S2. Baseline characteristics of Secondary Preventions of Small Subcortical Strokes trial participants included and excluded in longitudinal analysis.

Characteristic	Included (n=2,454)		Excluded (n=566)		Total (N=3,020)	
	No. or mean	(%) or (SD)	No. or mean	(%) or (SD)	No. or mean	(%) or (SD)
Age	62.9	(10.7)	62.1	(11.2)	62.8	(10.8)
Male	1,557	(63.4)	345	(61.0)	1,902	(63.0)
Race**						
White	1,218	(49.6)	320	(56.5)	1,538	(50.9)
Hispanic	801	(32.6)	115	(20.3)	916	(30.3)
Black	375	(15.3)	117	(20.7)	492	(16.3)
Other	60	(2.4)	14	(2.5)	74	(2.5)
Smoking*						
Never	974	(39.7)	222	(39.2)	1,196	(39.6)
Former	1,007	(41.0)	200	(35.3)	1,207	(40.0)
Current	473	(19.3)	144	(25.4)	617	(20.4)
Diabetes	808	(32.9)	194	(34.3)	1,002	(33.2)
History of hypertension	1,835	(74.8)	429	(75.8)	2,264	(75.0)
Antihypertensive use	2,079	(84.7)	478	(84.5)	2,557	(84.7)
ACE inhibitor or ARB use	1,663	(67.8)	364	(64.3)	2,027	(67.1)
Statin use	1,675	(68.3)	406	(71.7)	2,081	(68.9)
Prior lacunar stroke*						
Yes	243	(9.9)	65	(11.5)	308	(10.2)
Missing	2	(0.1)	3	(0.5)	5	(0.2)
Total cholesterol, mg/dL	187.2	(46.2)	191.1	(50.6)	187.9	(47.1)
High-density lipoprotein cholesterol, mg/dL	45.4	(18.3)	45.4	(19.0)	45.4	(18.4)
Systolic blood pressure, mmHg*	142.6	(18.7)	144.6	(19.3)	143.0	(18.8)
Body mass index, kg/m ²	29.1	(7.0)	29.0	(6.0)	29.1	(6.8)
eGFR, mL/min/1.73m ²	80.6	(18.6)	80.7	(20.1)	80.6	(18.9)
eGFR <60	367	(15.0)	98	(17.3)	465	(15.4)
eGFR 60-90	1259	(51.3)	268	(47.3)	1527	(50.6)
eGFR >90	828	(33.7)	197	(34.8)	1025	(33.9)
Missing	0	(0.0)	3	(0.5)	3	(0.1)
White matter hyperintensity score	5.4	(4.1)	5.8	(4.2)	5.5	(4.1)
SBP goal <130	1,218	(49.6)	283	(50.0)	1,501	(49.7)

Differences in distribution of categorical variables and means of continuous variables tested using chi-squared and t-test, respectively. * = p for comparison < 0.05, ** = p < 0.0005. SD = standard deviation, ACE = angiotensin-converting enzyme, ARB = angiotensin receptor blocker, eGFR = estimated glomerular filtration rate.

Figure S1. Kaplan-Meier estimates of probability of recurrent stroke among persons randomized to higher vs. lower BP target, stratified by WMH tertile.



WMH = white matter hyperintensities, SBP = systolic blood pressure.