

SUPPLEMENTAL MATERIAL

Figure S1. Preconception exposure model.

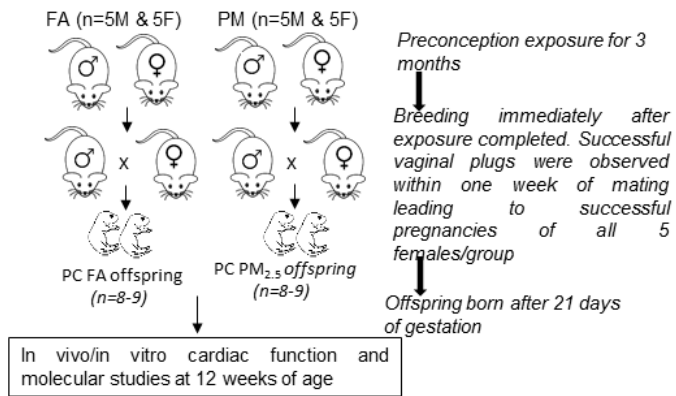
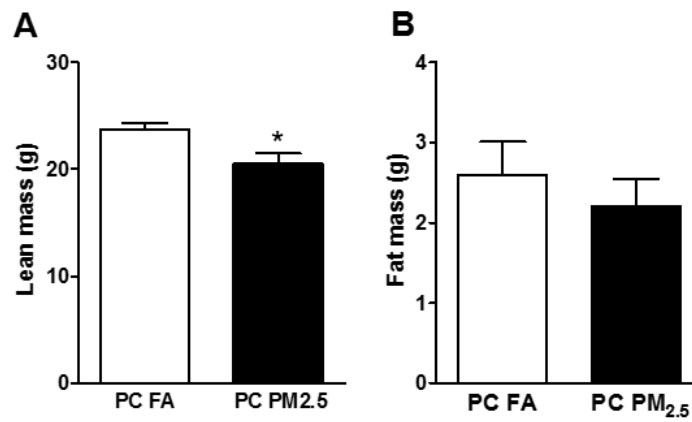
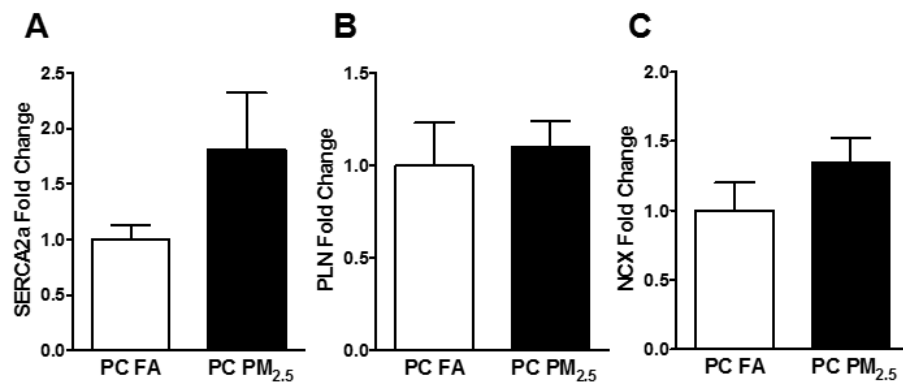


Figure S2. Body weight parameters from mice born to preconception FA or PM_{2.5} exposed parents.



(A) Lean mass and **(B)** Fat mass. Data were obtained from 3-month-old mice heart (n=6 mice/group) that were born to preconception FA or PM_{2.5} exposed parents and expressed as mean \pm S.E.M. *p<0.05 vs PC FA controls.

Figure S3. Quantitative PCR analysis showing expression of (A) Sarco/endoplasmic reticulum Ca^{2+} -ATPase (SERCA-2A), (B) Phospholamban (PLN) and (C) $\text{Na}^+/\text{Ca}^{2+}$ exchanger (NCX).



Data were obtained from 3-month-old mice heart (n=6 mice/group) that were born to preconception FA or PM_{2.5} exposed parents and expressed as mean \pm S.E.M.

Figure S4. Quantitative PCR analysis showing expression of (A) DNA methyltransferases-1 (Dnmt1), (B) DNA methyltransferases-3a (Dnmt3a), (C) DNA methyltransferases-3b (Dnmt3b).

