

SUPPLEMENTAL MATERIAL

Table S1. Cox models for Mortality within 30-day Post-TAVR Adjusted for Clinical Variables.

Parameter	HR (95%CI)	P-value
Wait time	1 (0.99-1.0)	0.01
Age	1.00 (0.97-1.03)	0.99
Female, sex	1.19 (0.89-1.58)	0.23
Rural Resident	1.60 (1.27-2.01)	<.001
Charlson Score	1.07 (0.97-1.18)	0.18
Frailty	1.53 (1.03-2.27)	0.04
HF	1.33 (0.88-2.01)	0.18
DLP	1.00 (0.70-1.43)	0.99
Dementia	1.00 (0.48-2.38)	0.87
DM	1.03 (0.78-1.35)	0.84
HTN	1.40 (0.46-4.28)	0.55
COPD	1.08 (0.81-1.45)	0.60
Malignancy	0.87 (0.44-1.69)	0.67
Renal disease	1.05 (0.53-2.10)	0.88
Dialysis	1.24 (0.56-2.75)	0.60
CAD	1.26 (0.72-2.22)	0.42
Arrhythmia	1.22 (0.87-1.70)	0.25
CVD	1.19 (0.71-2.0)	0.50
Lung disease	2.18 (0.97-4.87)	0.06

PVD	1.14 (0.74-1.74)	0.56
Prior PCI	0.89 (0.64-1.24)	0.49
Prior CABG	0.55 (0.41-0.75)	<.001
Prior Valve surgery	1.41 (0.87-2.30)	0.17
Valve in valve	0.39 (0.09-1.66)	0.20
Trans femoral	0.46 (0.32-0.65)	<.001
Income Quintile 1	1.15 (0.61-2.19)	0.66
Income Quintile 2	0.81 (0.58-1.12)	0.21
Income Quintile 3	0.95 (0.56-1.59)	0.84
Income Quintile 4	1.08 (0.62-1.90)	0.78

AF= Atrial Fibrillation; CABG= Coronary artery bypass graft; CAD= Coronary artery disease;
 HF= Heart Failure; CI= Confidence Interval; COPD= Chronic Obstructive Lung Disease; CVD=
 Cerebrovascular disease; DLP= Dyslipidemia; DM= Diabetes mellitus; HTN= Hypertension;
 HR= Hazard Ratio; ILD= Interstitial Lung Disease; PCI= Percutaneous coronary intervention;
 PVD= Peripheral vascular disease; TAVR= Trans Catheter Aortic Valve Replacement

Table S2. Cox models for Readmission within 30-day of post-TAVR Adjusted for Clinical Variables.

Parameter	HR (95%CI)	P-value
Wait time	1.0 (1.0-1.0)	0.02
Age	1.02 (1.00-1.04)	0.08
Female, sex	0.80 (0.6-1.06)	0.12
Rural Resident	1.28 (0.98-1.68)	0.07
Charlson Score	1.12 (1.02-1.24)	0.02
Frailty	1.14 (0.84-1.53)	0.40
CHF	1.32 (1.06-1.64)	0.01
DLP	0.93 (0.77-1.12)	0.43
Dementia	1.19 (0.88-1.62)	0.26
DM	0.96 (0.77-1.21)	0.75
HTN	1.11 (0.60-2.06)	0.73
COPD	1.17 (0.94-1.46)	0.16
Malignancy	0.74 (0.51-1.08)	0.12
Renal Disease	0.93 (0.65-1.32)	0.67
Dialysis	1.37 (0.73-2.54)	0.33
CAD	1.36 (0.87-1.55)	0.31
Arrhythmia/AF	1.25 (0.87-1.59)	0.07
CVD	0.92 (0.56-1.52)	0.75
Lung disease	1.51 (0.63-3.66)	0.36

PVD	0.96 (0.68-1.37)	0.84
Prior PCI	0.97 (0.85-1.11)	0.64
Prior CABG	0.86 (0.69-1.08)	0.19
Prior Valve surgery	0.75 (0.47-1.18)	0.21
Valve in valve	0.92 (0.57-1.49)	0.75
Trans Femoral	0.45 (0.38-0.54)	<.001
Income Quintile 1	1.17 (0.82-1.66)	0.39
Income Quintile 2	0.95 (0.67-1.37)	0.80
Income Quintile 3	1.32 (1.02-1.70)	0.04
Income Quintile 4	1.14 (1.02-1.27)	0.02

AF= Atrial Fibrillation; CABG= Coronary artery bypass graft; CAD= Coronary artery disease;

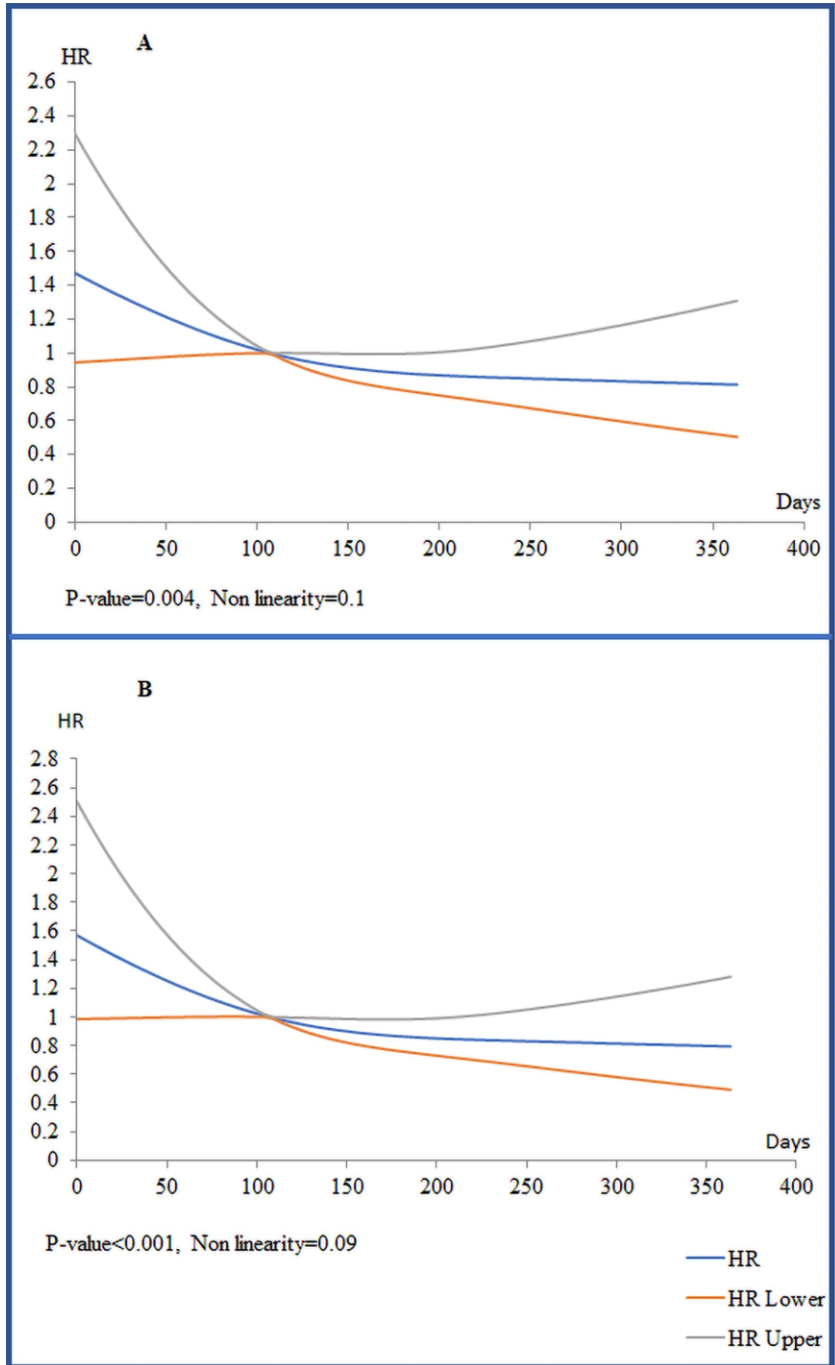
HF= Heart Failure; CI= Confidence Interval; COPD= Chronic Obstructive Lung Disease; CVD=

Cerebrovascular disease; DLP=Dyslipidemia; DM= Diabetes mellitus; HTN= Hypertension; HR=

Hazard Ratio; ILD= Interstitial Lung Disease; PCI=Percutaneous coronary intervention; PVD=

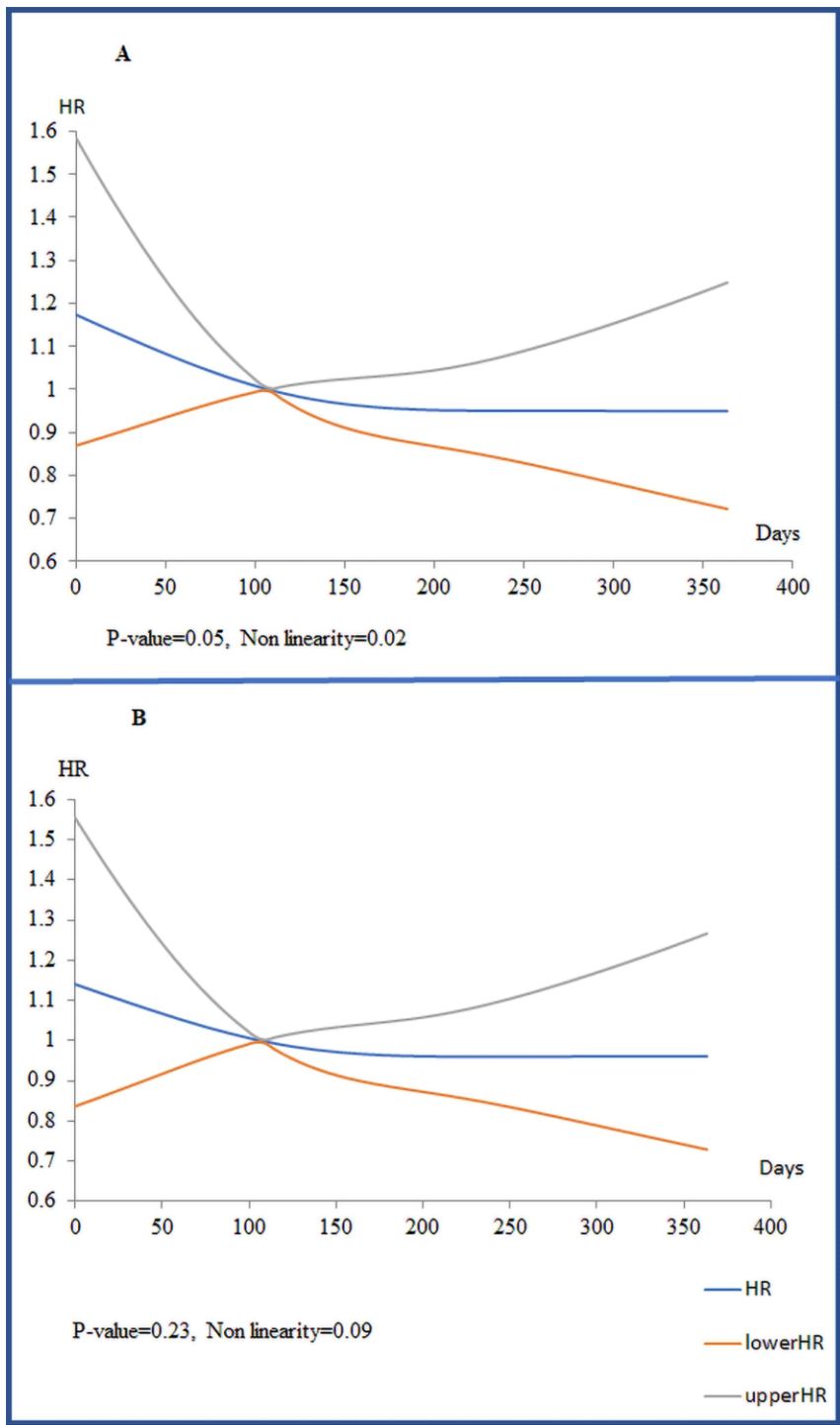
Peripheral vascular disease; TAVR= Trans Catheter Aortic Valve Replacement.

Figure S1. Models for Mortality within 30-day of Post-TAVR.



A. Adjusted for Clinical Variables and HF on wait-list. **B.** Adjusted for Clinical Variables and All-cause Hospitalization on wait-list. HF= Heart Failure; HR= Hazard Ratio; TAVR= Trans Catheter Aortic Valve Replacement.

Figure S2. Models for Readmission within 30-day of Post-TAVR.



A. Adjusted for Clinical Variables and HF on wait-list. **B.** Adjusted for Clinical Variables and All-cause Hospitalization on wait-list. HF= Heart Failure; HR= Hazard Ratio; TAVR= Trans Catheter Aortic Valve Replacement.