

DSE modulates CCL5/CCR1 in HCC cells

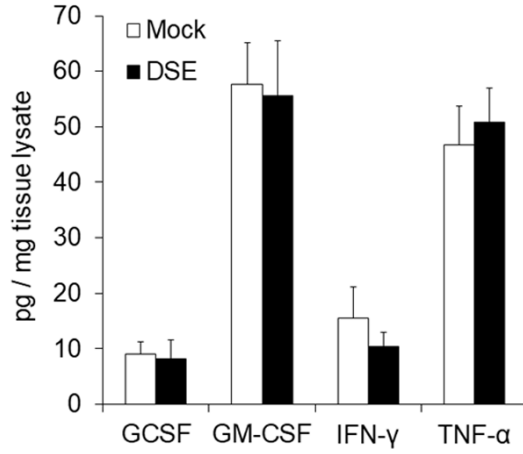


Figure S1. Expression of GCSF, GM-CSF, IFN-γ, and TNF-α in transplanted mouse tumor tissue. n = 5 for each group.

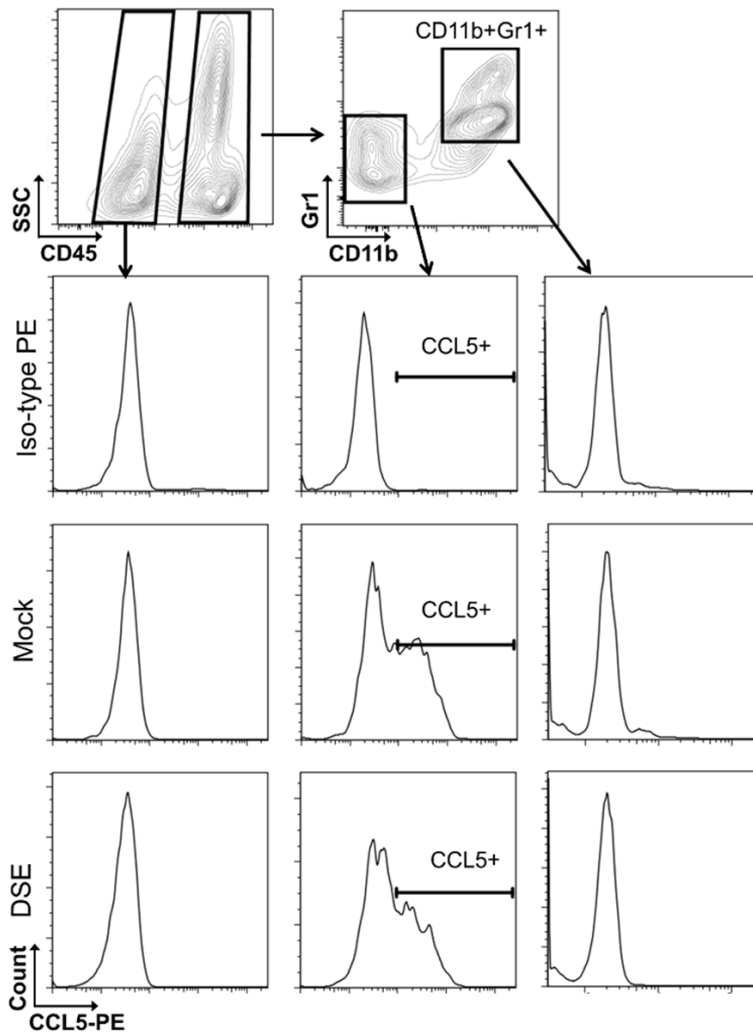


Figure S2. CCL5 expressing cells in transplanted mouse tumor tissue. Gating strategy for identifying different cell population in tumor tissue was shown (top). Mouse IgG2b PE (Iso-type PE) was used as negative signal control. Representative data was shown. n = 5 for each group.

DSE modulates CCL5/CCR1 in HCC cells

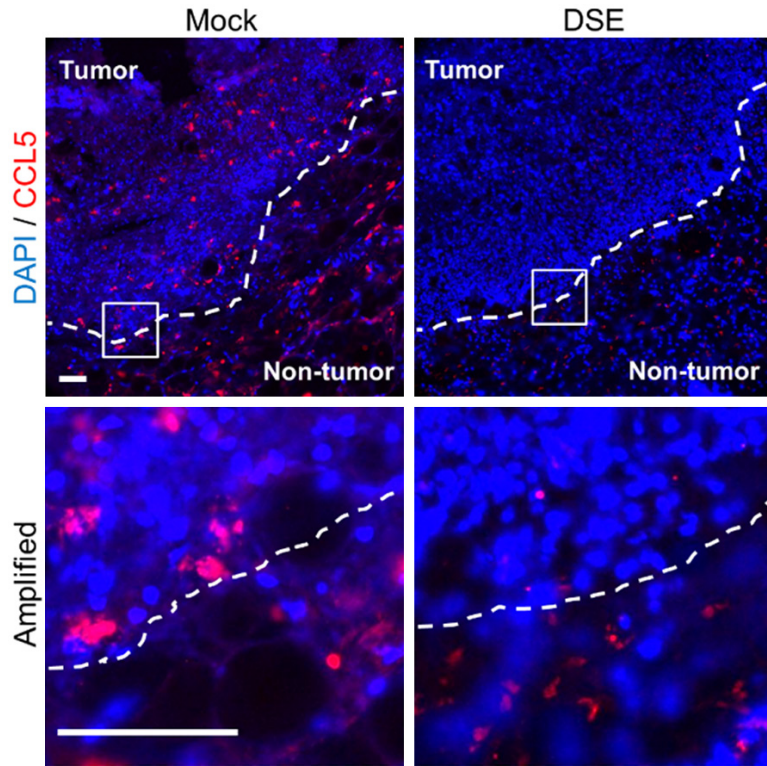


Figure S3. Location and expression of CCL5 in Hepa1-6 tumor tissue. Immunofluorescence was used on Hepa1-6 generated tumors from C57BL/6 mice, 10 days after transplantation. CCL5 (red) is expressed within tumor tissue and extracellular matrix. Nuclei were counter stained with DAPI (blue). Scale bars, 100 μ m.