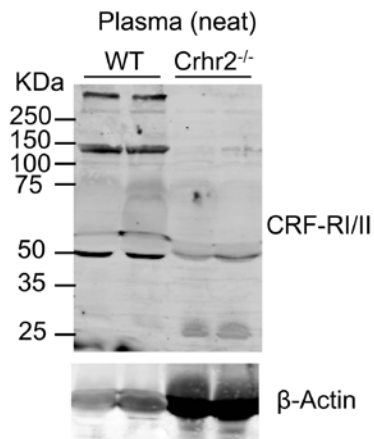
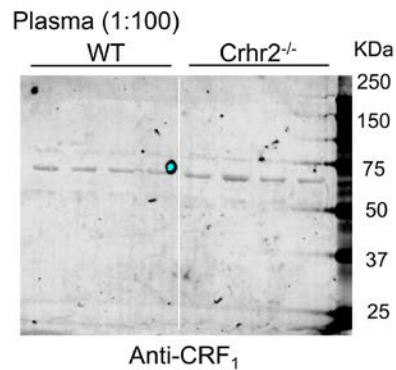


Supplementary Materials:



**Supplementary Figure 1. CRF receptors in murine plasma from WT mice, but not Crhr2<sup>-/-</sup> mice.** Representative immunoblots showing CRFR expression in plasma (neat) of wild-type (WT), whereas no band specific for CRFR was detected in plasma from Crhr2 null mice. β-actin, a housekeeping gene was present in robust quantities in plasma of WT and Crhr2 null mice.



**Supplementary Figure 2. Presence of CRF<sub>1</sub> receptors in mouse plasma.** Representative immunoblots showing presence of CRF<sub>1</sub> receptor expression in plasma from WT and Crhr2<sup>-/-</sup> mice. Unlike the CRF-R1/II antibody, this CRF-R1 antibody detected only 3 bands, and as expected, expression of CRF<sub>1</sub> receptors in Crhr2<sup>-/-</sup> mice was not affected.