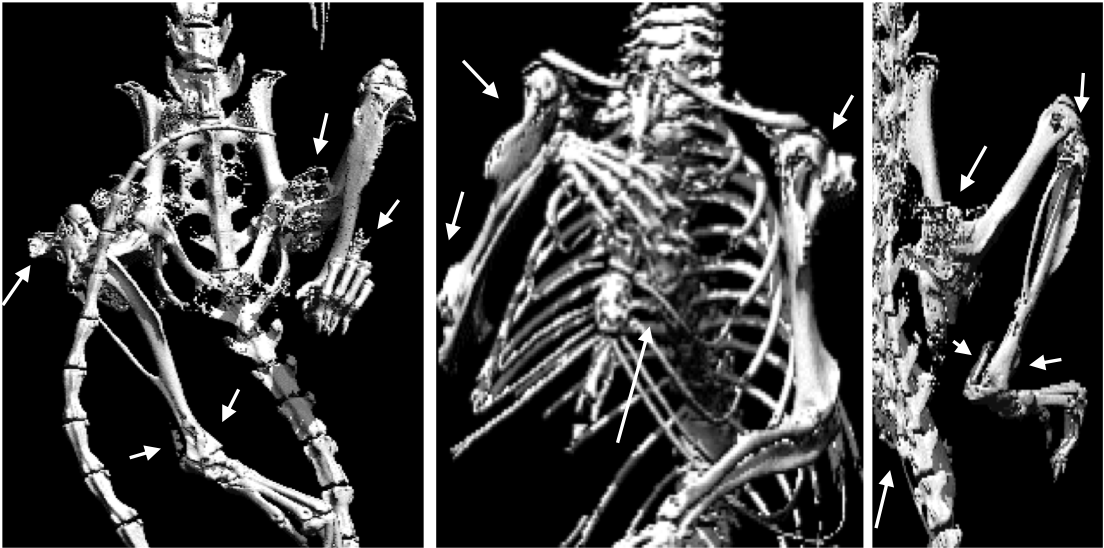
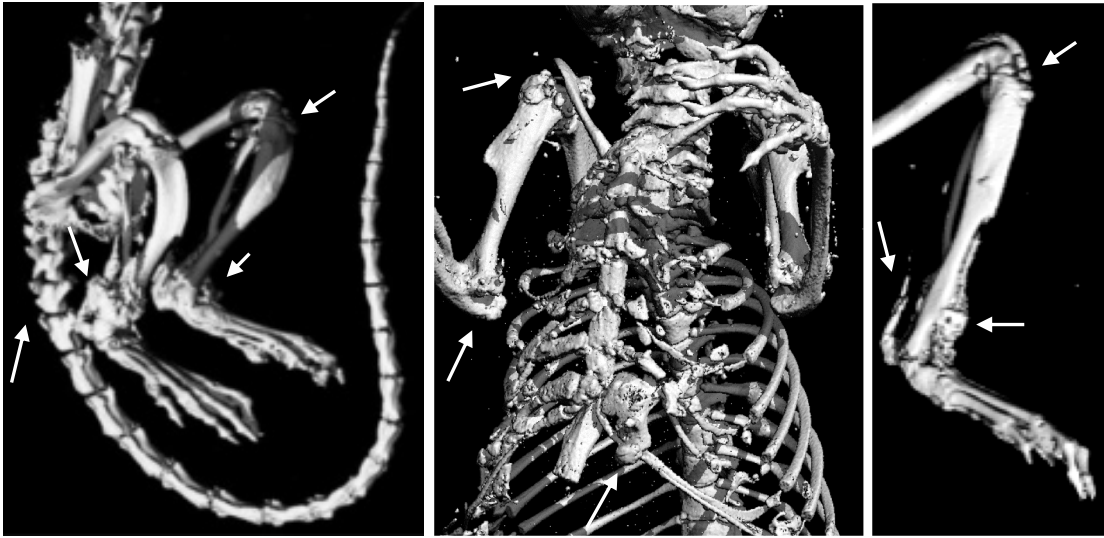


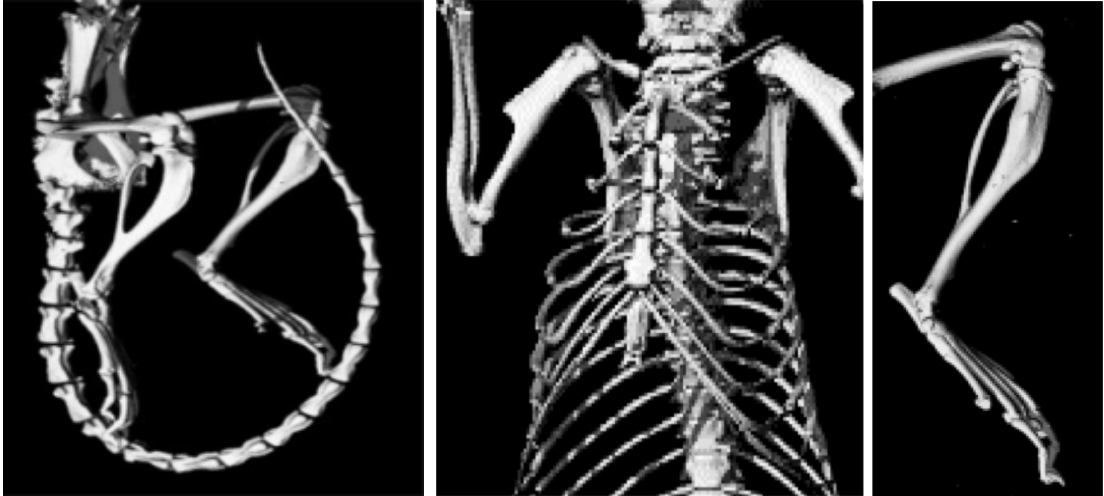
Scx-Cre:Acvr1^{[R206H]FlEx/+}



Scx-Cre:ACVR1^{Q207D}-Tg

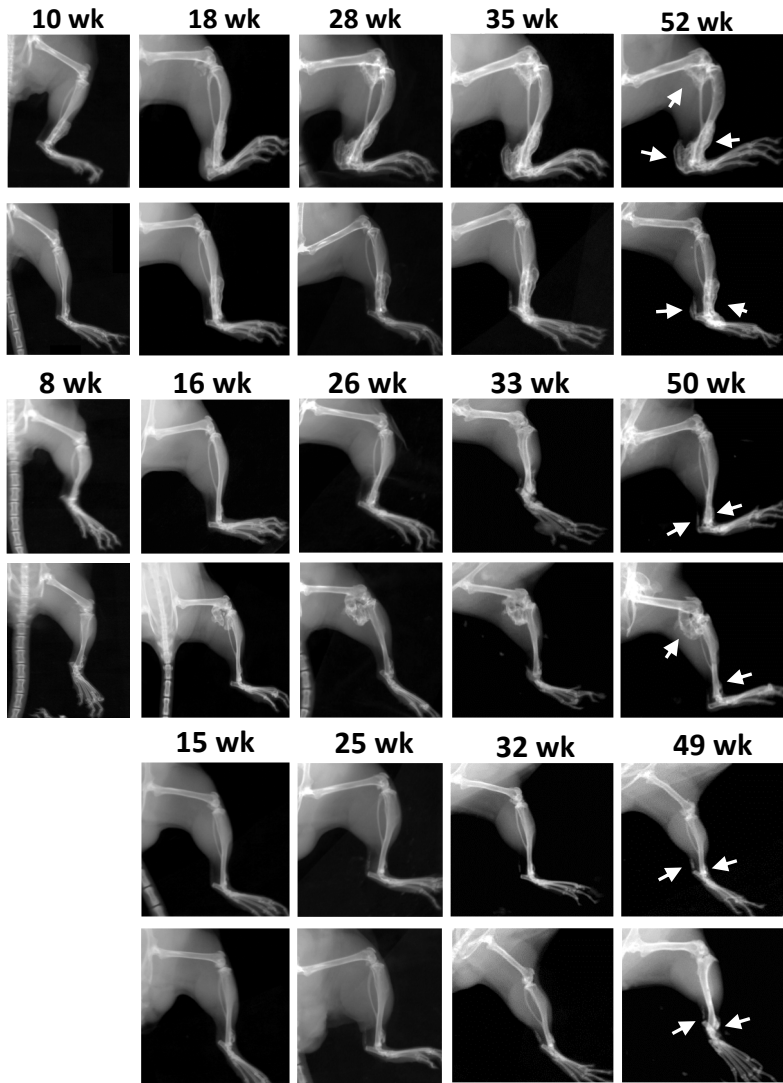


Scx-Cre



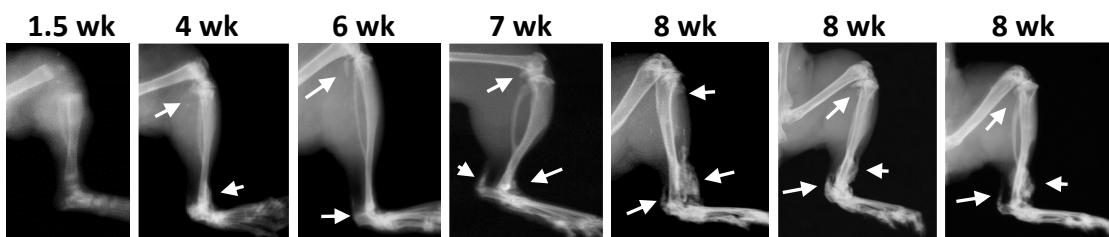
Supplemental Figure 2

Scx-Cre:Acvr1^{[R206H]FlEx/+}

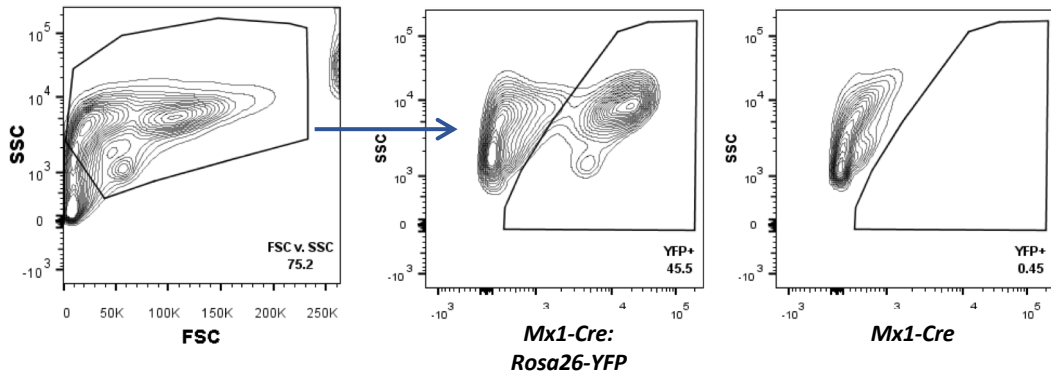


<i>Scx-Cre:Acvr1^{[R206H]FlEx/+}</i> penetrance	18 weeks	28 weeks	35 weeks	52 weeks
retropopliteal fossa	17% (3/18)	17% (3/18)	22% (4/18)	33% (2/6)
tibialis ligament	28% (5/18)	39% (7/18)	72% (13/18)	100% (6/6)
Achilles tendon	11% (2/18)	33% (6/18)	67% (12/18)	83% (5/6)

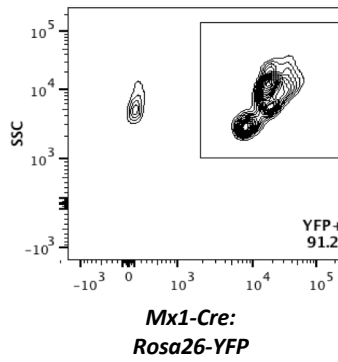
Scx-Cre:ACVR1^{Q207D}-Tg



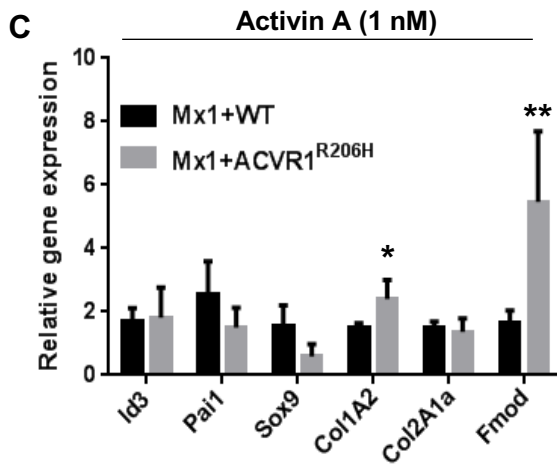
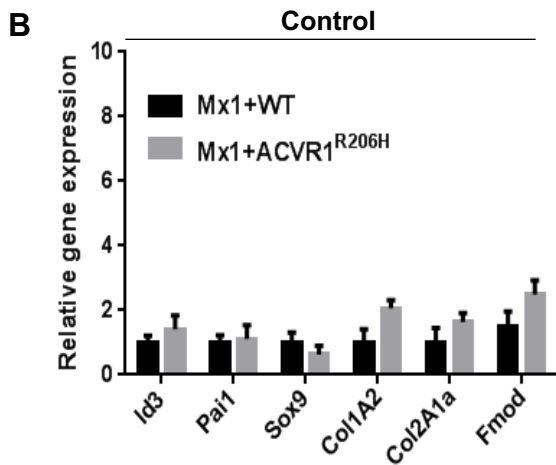
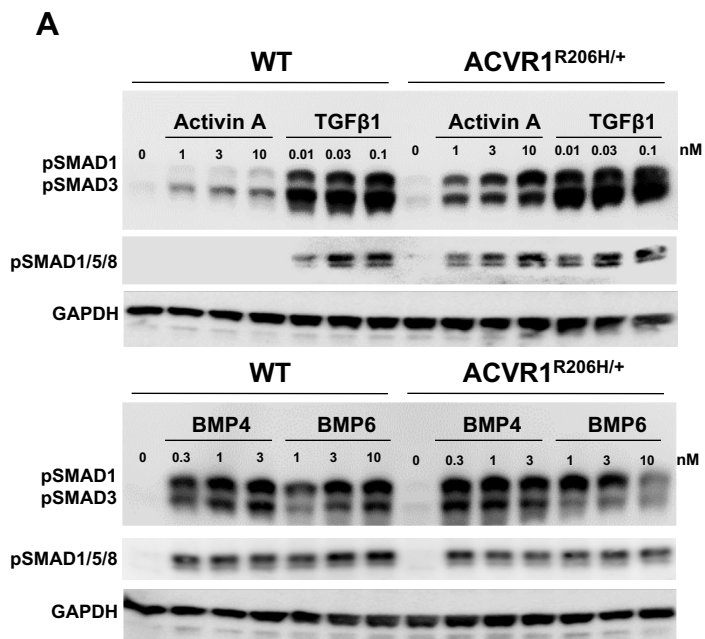
Skeletal muscle interstitial



Bone marrow

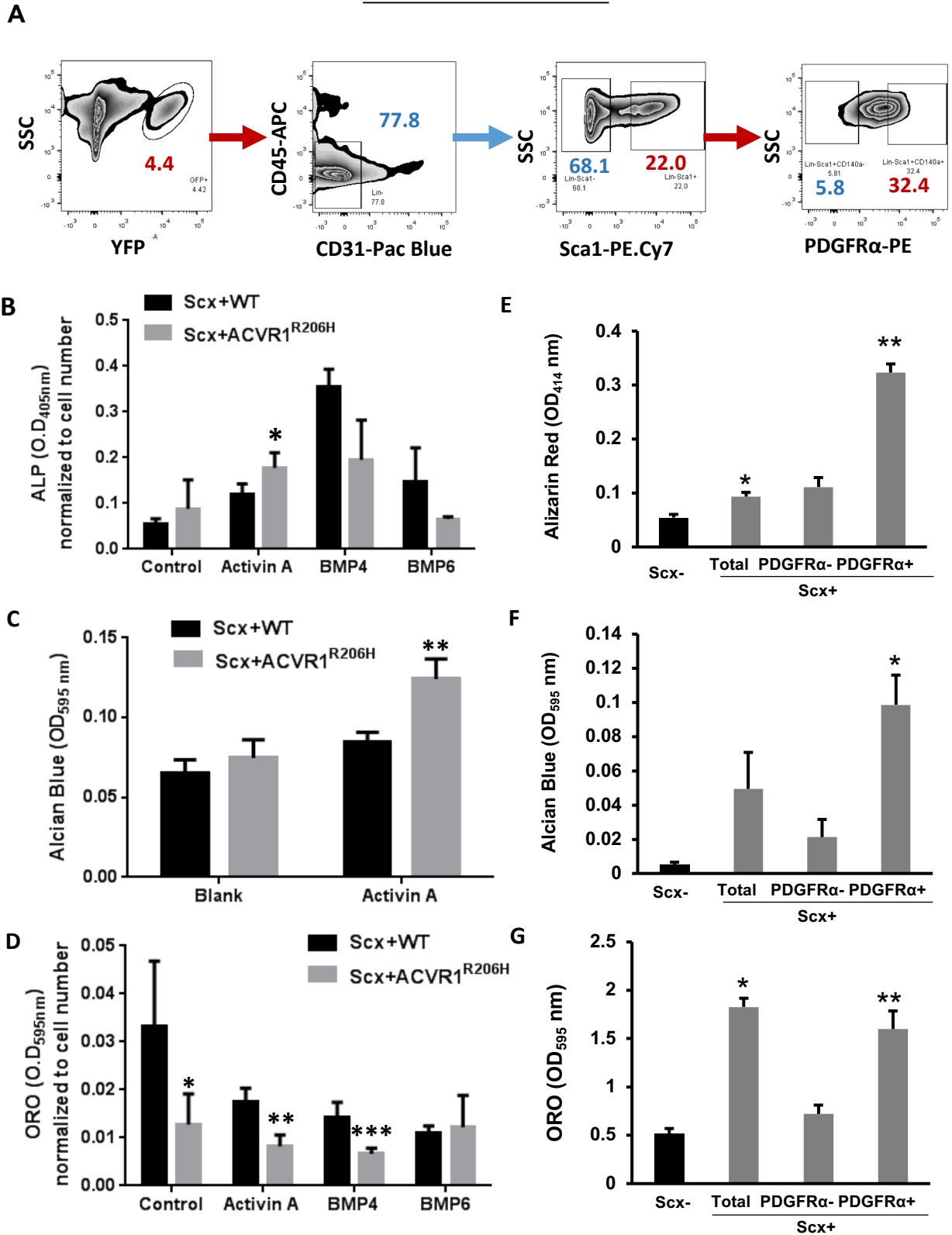


Supplemental Figure 5



Supplemental Figure 6

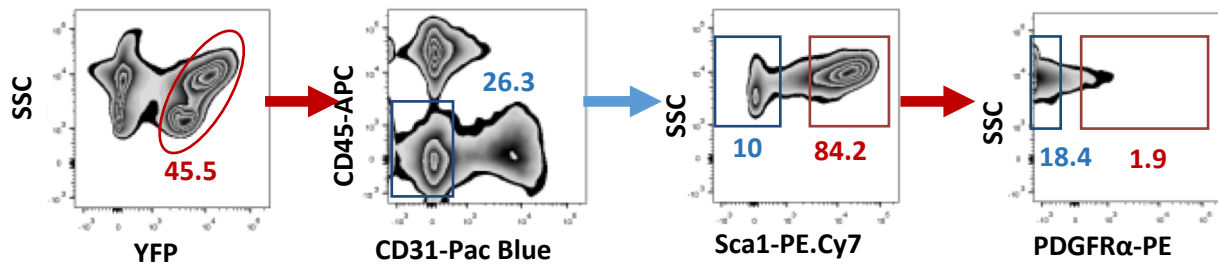
Scx-Cre:Rosa26-YFP



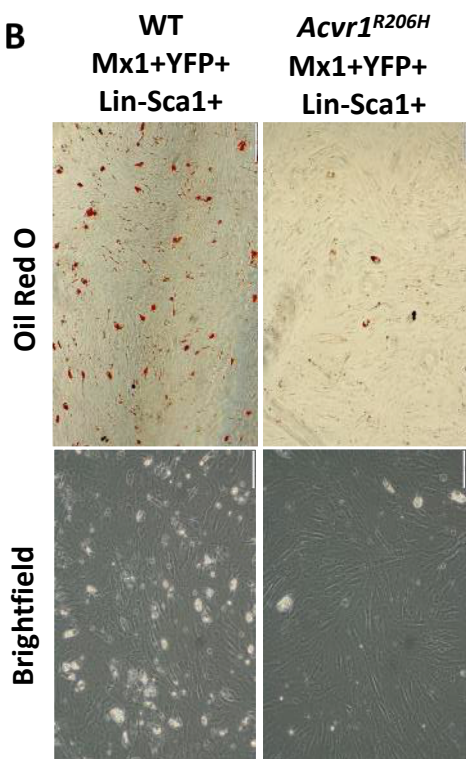
Supplementary figure 7

Mx1-Cre:Rosa26-YFP

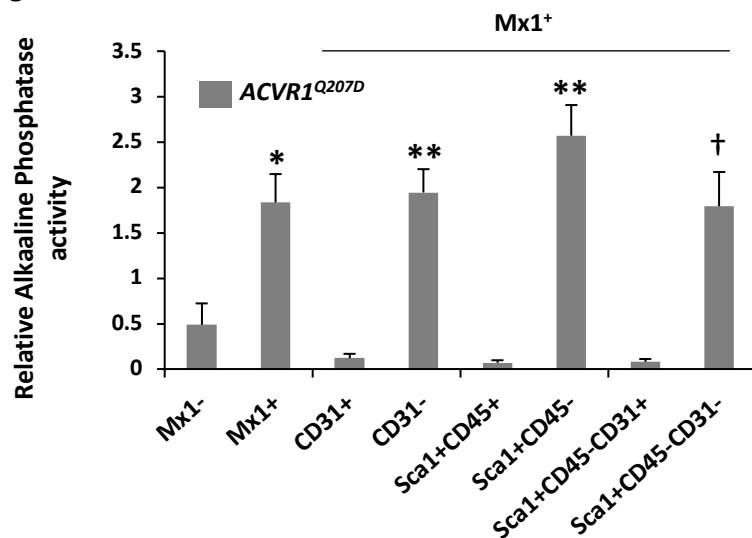
A



B



C



D

