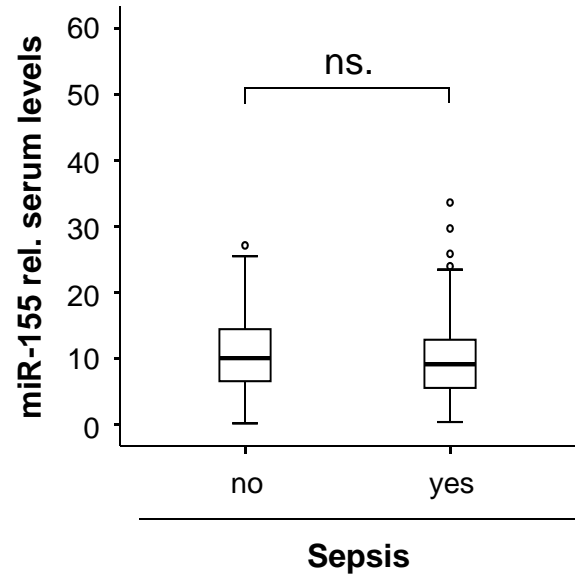
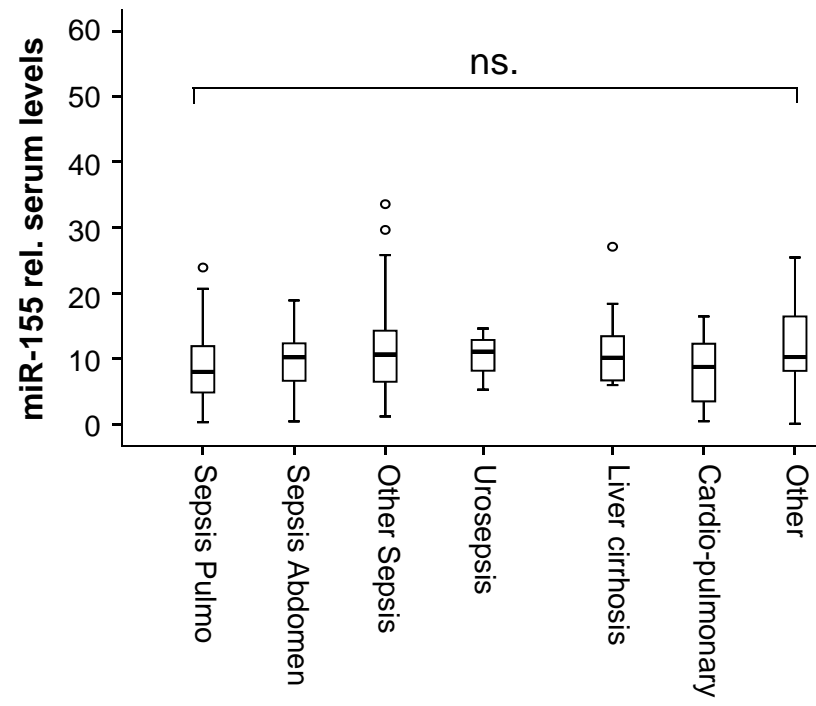
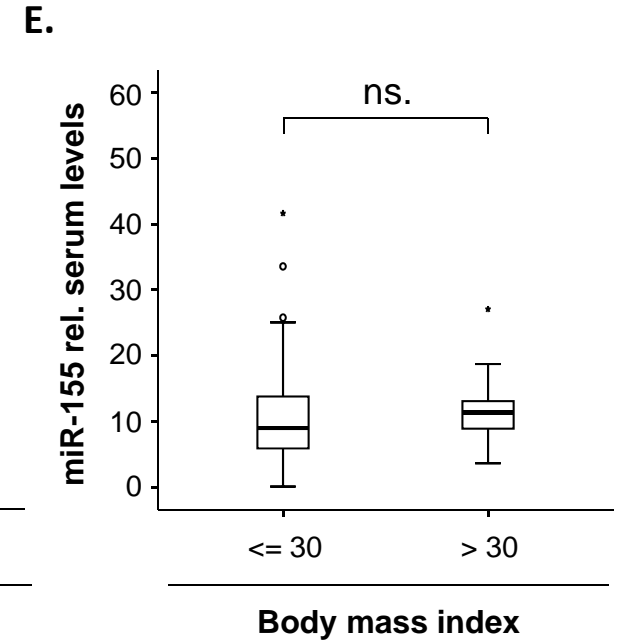
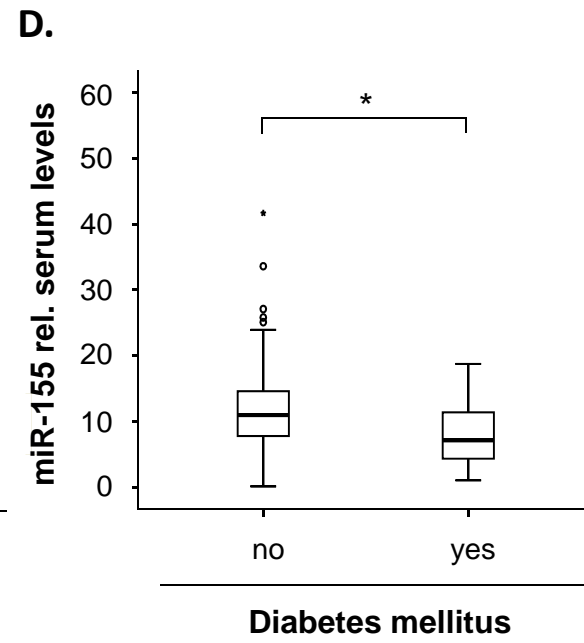
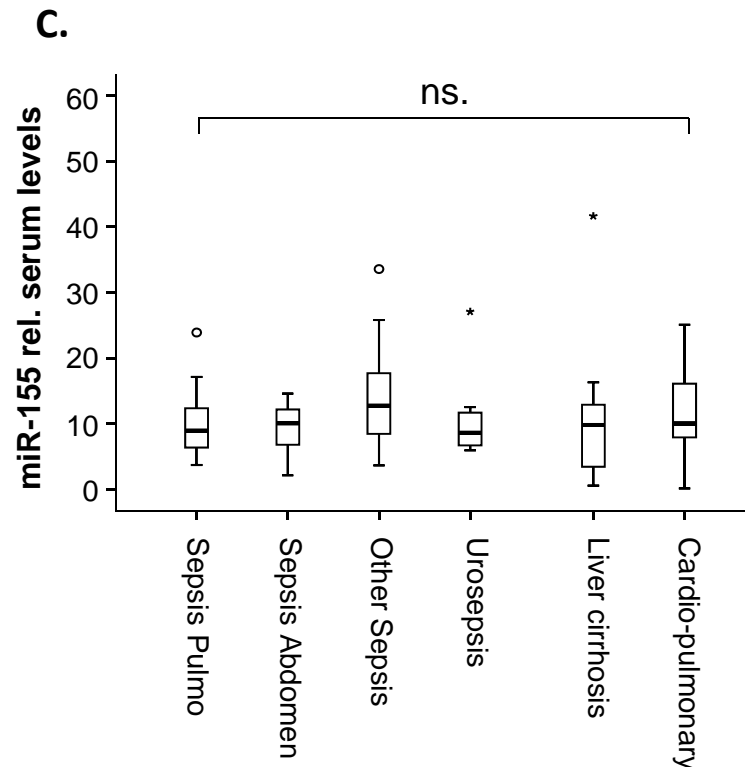
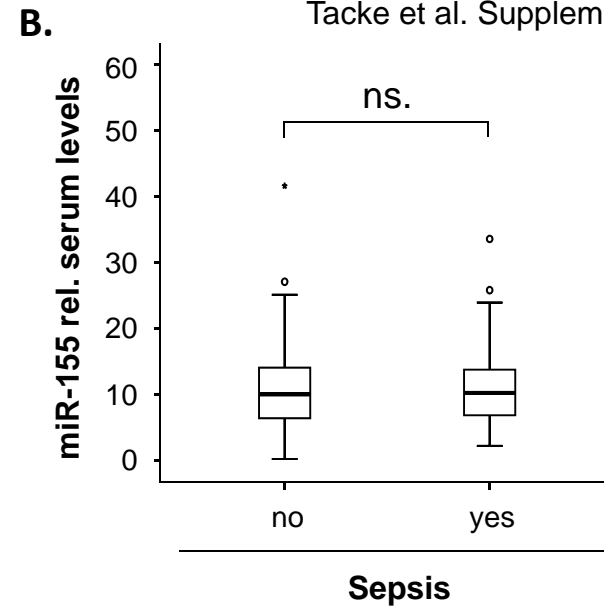
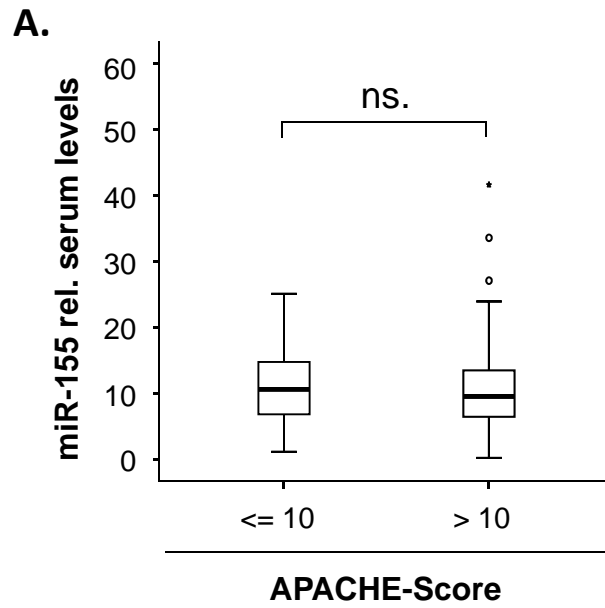


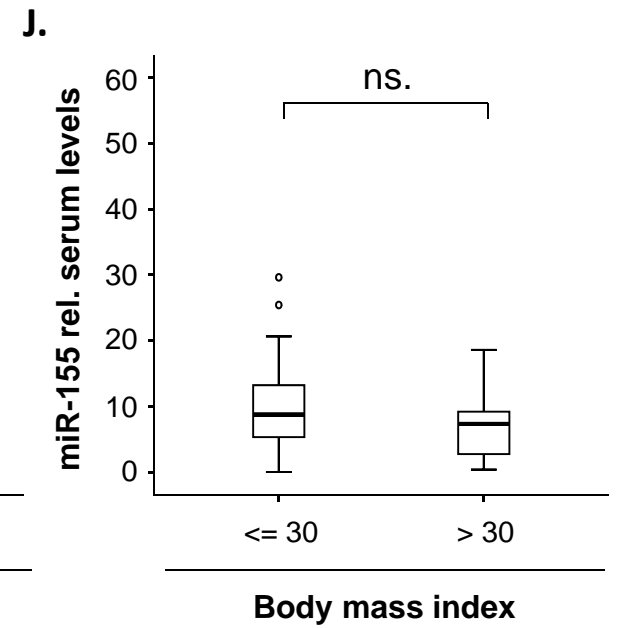
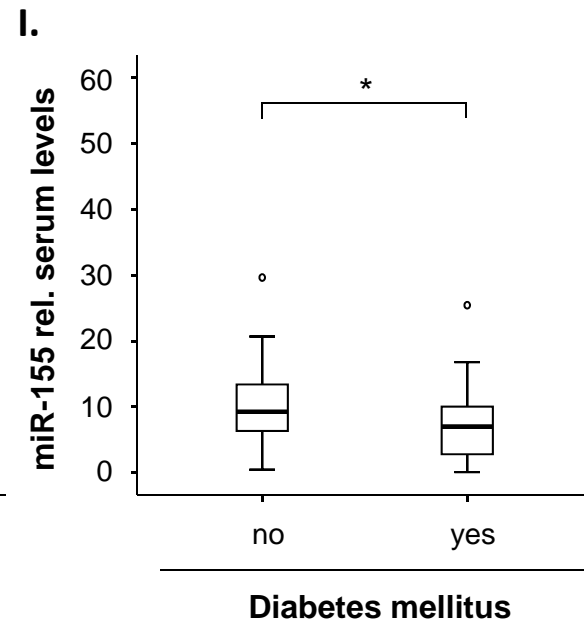
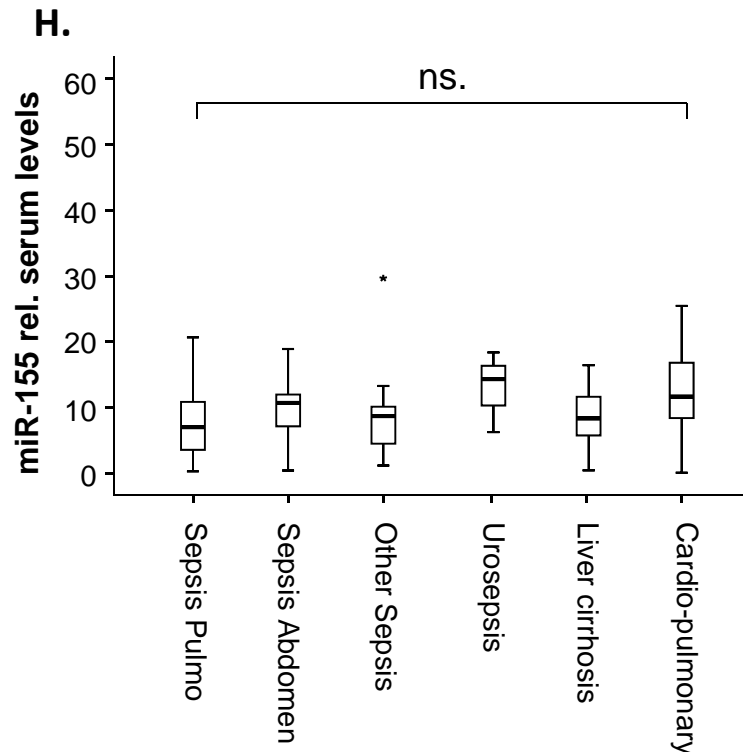
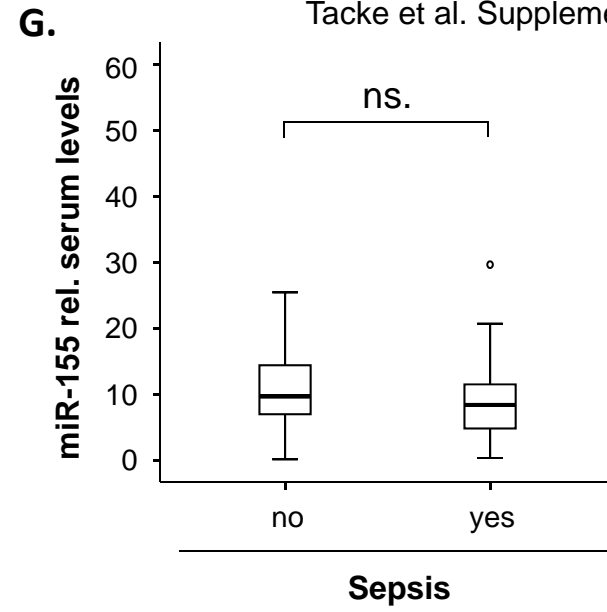
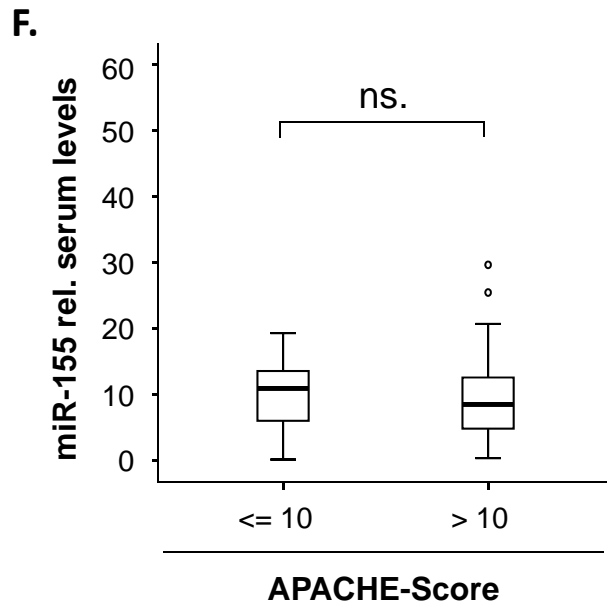
A.

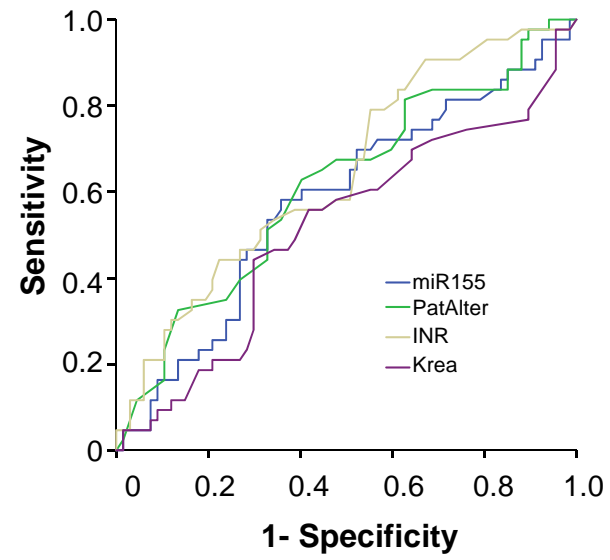


B.









Supplementary Table 1A. Disease etiology of the study population (< 65 years)

	sepsis	non-sepsis
	n=74	n=51
Sepsis critical illness		
Source of infection n (%)		
Pulmonary	34 (27.2%)	
Abdominal	17 (13.6%)	
Urogenital	3 (2.4%)	
Other	20 (16.0%)	
Non-sepsis critical illness		
n (%)		
cardiopulmonary disease		13 (10.4%)
decompensated liver cirrhosis		9 (7.2%)
non-sepsis other		29 (23.2%)

Supplementary Table 1B. Disease etiology population (> 65 years)

	sepsis	non-sepsis
	n=60	n=33
Sepsis critical illness		
Source of infection n (%)		
Pulmonary	37 (39.8%)	
Abdominal	11 (11.8%)	
Urogenital	0 (0%)	
Other	12 (12.9%)	
Non-sepsis critical illness		
n (%)		
cardiopulmonary disease		16 (17.2%)
decompensated liver cirrhosis		3 (3.2%)
non-sepsis other		14 (15.1%)