

Stem Cell Reports, Volume 12

Supplemental Information

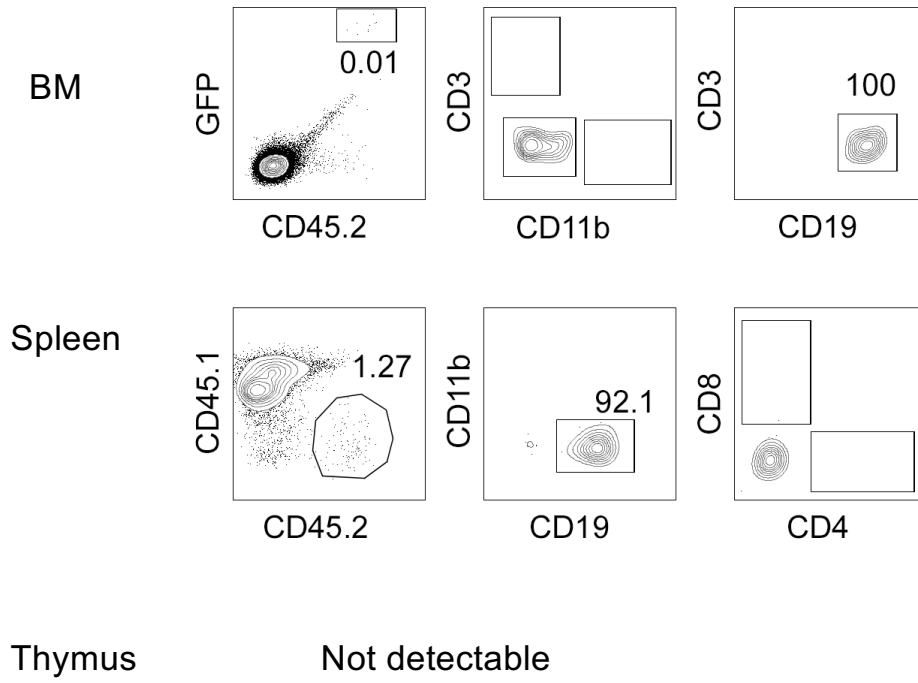
**Long-Term Engraftment of ESC-Derived B-1 Progenitor Cells Supports
HSC-Independent Lymphopoiesis**

Yang Lin, Michihiro Kobayashi, Nathalia Azevedo Portilho, Akansha Mishra, Hongyu Gao, Yunlong Liu, Pamela Wenzel, Brian Davis, Mervin C. Yoder, and Momoko Yoshimoto

	B cell subsets	Surface phenotype
PerC	B-2	IgM ⁺ CD23 ⁺
	B-1a	IgM ^{hi} CD23 ^{lo-neg} CD11b ⁺ CD5 ⁺
	B-1b	IgM ^{hi} CD23 ^{lo-neg} CD11b ⁺ CD5 ⁻
Spleen	Follicular B (FO)	AA4.1 ⁻ IgM ⁺ CD23 ⁺
	Marginal zone B (MZ)	AA4.1 ⁻ IgM ^{hi} CD23 ^{lo-neg} CD21 ^{hi}
	B-1	AA4.1 ⁻ IgM ^{hi} CD23 ^{lo-neg} CD21 ^{lo-neg}

Supplementary Table 1: Surface markers for B-cell subsets (related to Figures 1, 2, and 3)

PerC: peritoneal cells



Supplementary Figure (related to Figure 1, 2)

ES-derived cells in the recipient BM (upper panel) and spleen (lower panel) are depicted at 4 months after transplantation. Representative FACS plots are shown among 50 transplanted mice.