

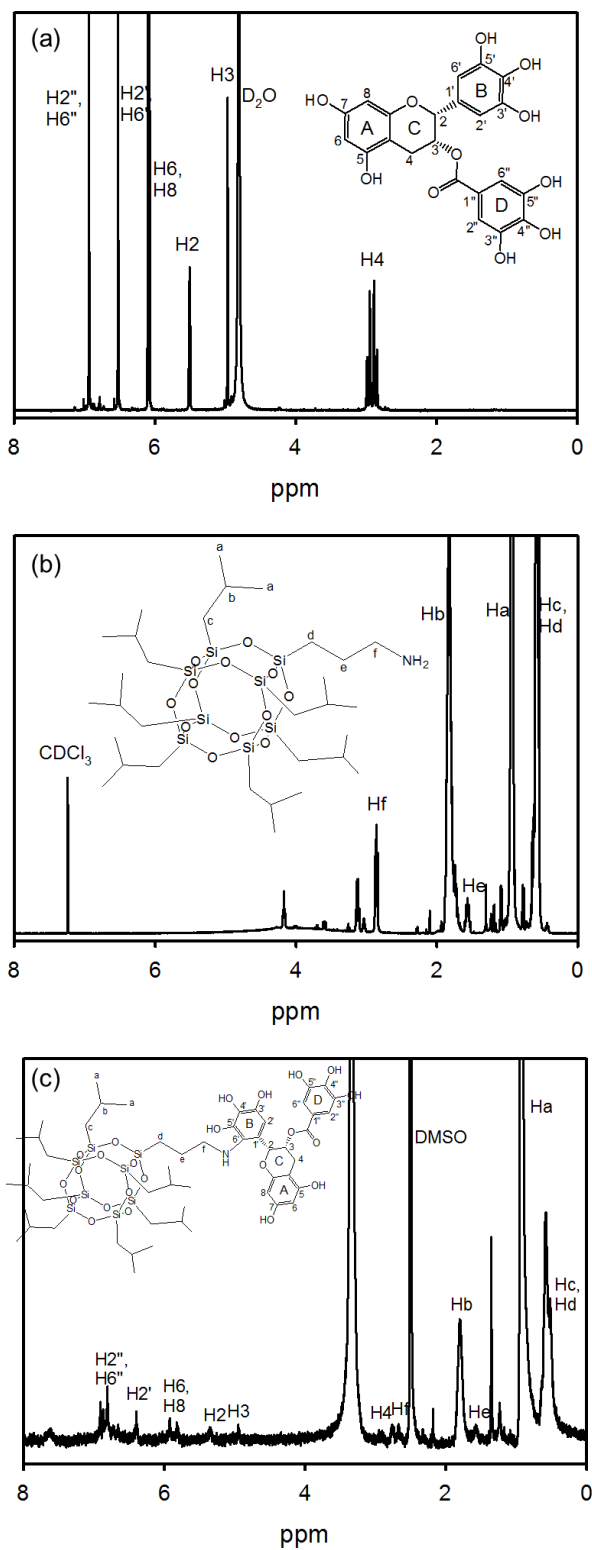
## Supporting Information

### **Poly(vinylidene fluoride) Composite Nanofibers Containing Polyhedral Oligomeric Silsesquioxane–Epigallocatechin Gallate Conjugate for Bone Tissue Regeneration**

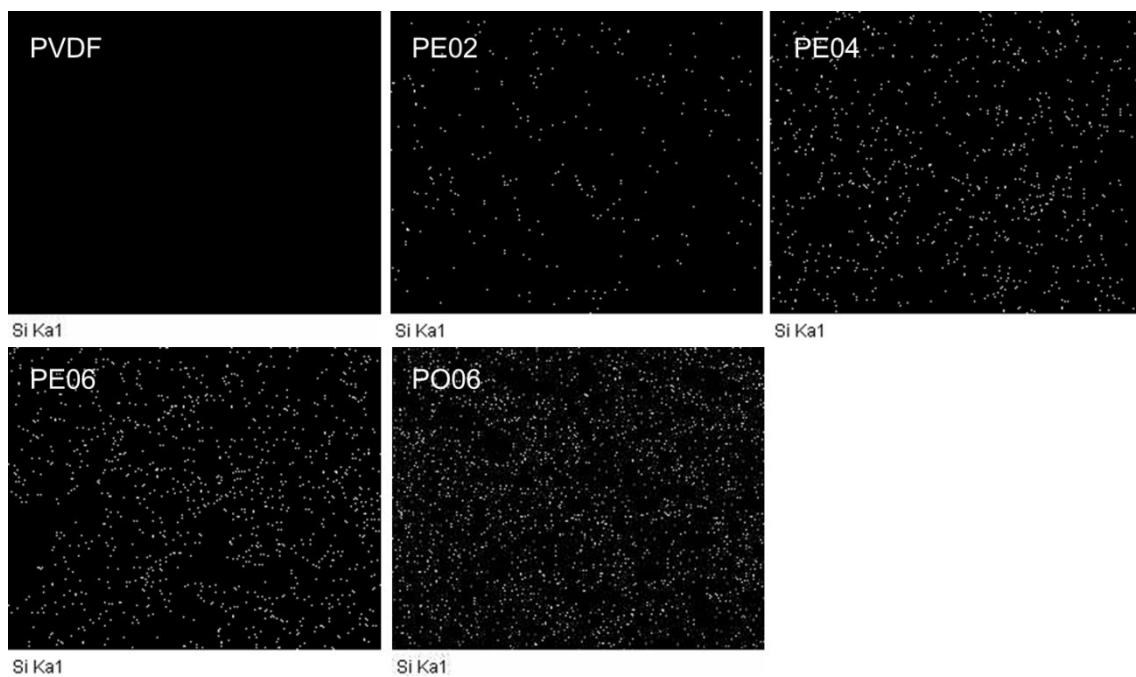
Hyo-Geun Jeong <sup>1</sup>, Yoon-Soo Han <sup>2</sup>, Kyung-Hye Jung <sup>2</sup> and Young-Jin Kim <sup>1,\*</sup>

<sup>1</sup> Department of Biomedical Engineering, Daegu Catholic University, Gyeongsan 38430, Republic of Korea; jhg2833@empal.com (H.-G.J.); yjkim@cu.ac.kr (Y.-J.K.)

<sup>2</sup> Department of Advanced Materials and Chemical Engineering, Daegu Catholic University, Gyeongsan 38430, Republic of Korea; yshancu@cu.ac.kr (Y.-S.H.); khjung@cu.ac.kr (K.-H.J.)



**Figure S1.** <sup>1</sup>H NMR spectra of (a) EGCG, (b) API-POSS, and (c) POSS-EGCG conjugate.



**Figure S2.** EDS Si-mapping images of the PVDF composite nanofibers.