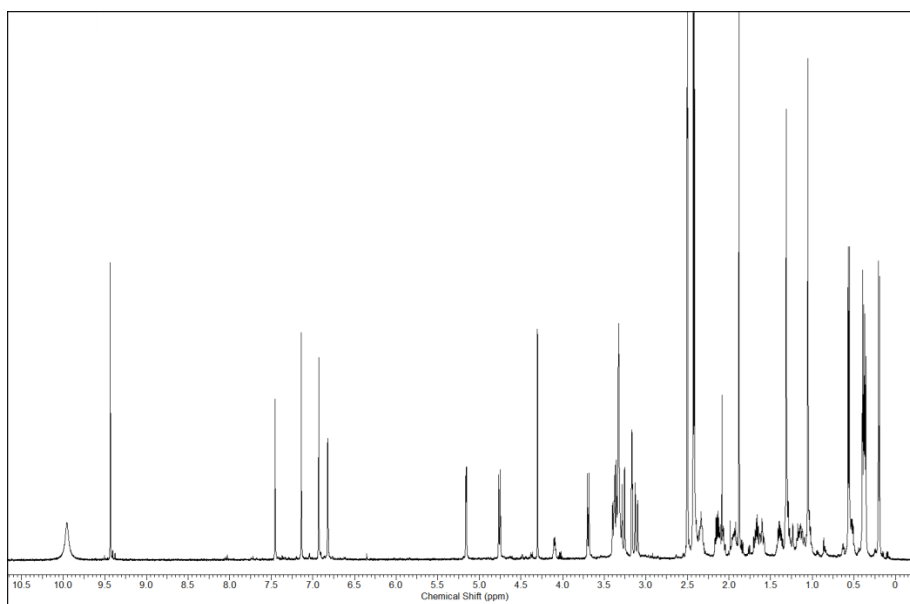


## Supplementary Materials:

**Table S1. Cytotoxic activity of gukulenin A in human ovarian cancer cells.**

cell lines	IC <sub>50</sub> <sup>a</sup> (μM)	
	gukulenin A	cisplatin
TOVG-21G	0.04 ± 0.00	42.67 ± 5.25
OVCAR-3	0.13 ± 0.02	11.76 ± 2.17
A2780	0.03 ± 0.00	20.61 ± 1.89
SKOV3	0.36 ± 0.06	28.90 ± 1.07

<sup>a</sup>IC<sub>50</sub> is defined as the concentration that reduces the number of cells by 50% compared with control cultures. The values represent the means of the results from three independent experiments with similar patterns.



**Figure S1. H-NMR spectrum of gukulenin A.**