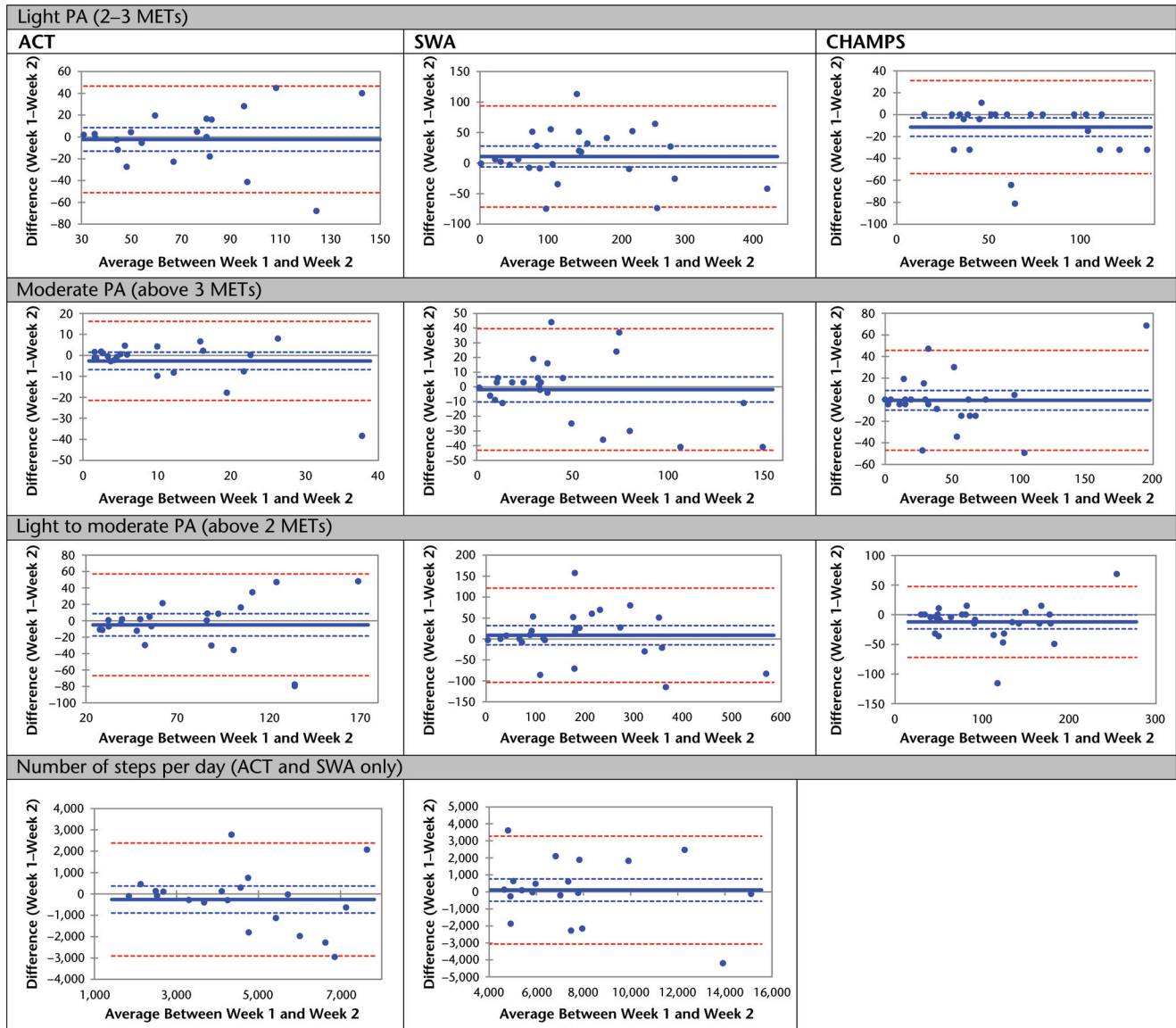


Reliability of Physical Activity Measures After Total Knee Arthroplasty



eFigure 2.

Bland-Altman plots from physical activity (PA) measures of duration (min/d) and number of steps from participants whose data were included in the reliability analysis. The blue solid line indicates the mean of the difference between measures from week 1 and those from week 2. The blue dashed lines indicate the 95% confidence interval for the difference between weeks. The red dashed lines indicate the 95% limit of agreement between the pooled means of PA measures for both weeks. ACT=Actigraph, CHAMPS=Community Healthy Activities Model Program for Seniors, METs=metabolic equivalents, SWA=SenseWear Armband.