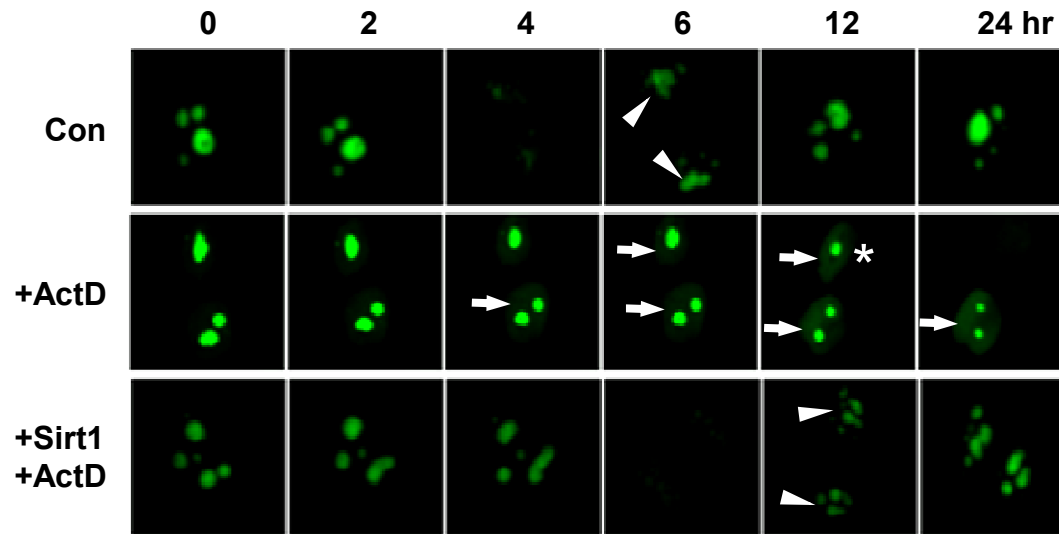


Supplemental Figure S1



Supplemental Figure S1. Sirt1-dependent inhibition of ActD-induced NSR revealed by live cell imaging. In normal cells, transfected eGFP-NPM was exclusively expressed in the nucleolar compartment. ActD-induced NSR was demonstrated by the diffusion of eGFP signal from nucleoli to the nucleoplasm (arrows). Some cells entered into cell cycle; the nucleoli disassembled before cell division and reassembled in newly formed daughter cells (indicated by arrowheads). Cell division events were also observed in ActD-treated cells with a lower frequency (asterisk); however, the reassembling of nucleoli did not occur as in control and Sirt1-overexpressing cells.