

SUPPORTING INFORMATION

Second Generation Triple-Helical Peptide Inhibitors of Matrix Metalloproteinases

Manishabrata Bhowmick (manishabrata.bhowmick@sial.com),^{†,¶} Dorota Tokmina-Roszyk (dtokminarosz2013@fau.edu),[§] Lillian Onwuha-Ekpete (lonwuhae@fau.edu),[§] Kelli Harmon (Kelli.Odoms@cchmc.org),[¥] Trista Robichaud (trista.k.robichaud@lonestar.edu),^Δ Rita Fuerst (rfuerst@scripps.edu),[£] Roma Stawikowska (rstawikowska@fau.edu),[§] Bjorn Steffensen (bjorn.steffensen@tufts.edu),^{Δ,Ω} William Roush (roush@scripps.edu),[£] Hector R. Wong (hector.wong@cchmc.org),[¥] and Gregg B. Fields (gfields@scripps.edu)^{*,§,£}

[†]Torrey Pines Institute for Molecular Studies, 11350 SW Village Parkway, Port St. Lucie, FL 34987, [¶]Sigma-Aldrich Corporation, 3 Strathmore Road, Natick, MA 01760, [§]Florida Atlantic University, 5353 Parkside Drive, Jupiter, FL 33458, [¥]Cincinnati Children's Hospital Medical Center, 3333 Burnet Avenue, Cincinnati, OH 45229, ^ΔUniversity of Texas Health Science Center, 7703 Floyd Curl Drive, San Antonio TX 78229, [£]The Scripps Research Institute/Scripps Florida, 130 Scripps Way, Jupiter, FL 33458, and ^ΩTufts University, School of Dental Medicine, 1 Kneeland Street, Boston, MA 02111

Table of Contents

Figure S1. Melting curves for THPs	3
Figure S2. CD spectra and melting curves of GlyΨ{PO ₂ H-CH ₂ }Ile-His-Lys-Gln THPI and GlyΨ{PO ₂ H-CH ₂ }Ile-Tyr-Phe-Gln THPI	4

Figure S3. Serum cytokine profiles 24 h after CLP	5
Figure S4. Wild-type mice bacterial colony counts in blood, 24 h after CLP	6

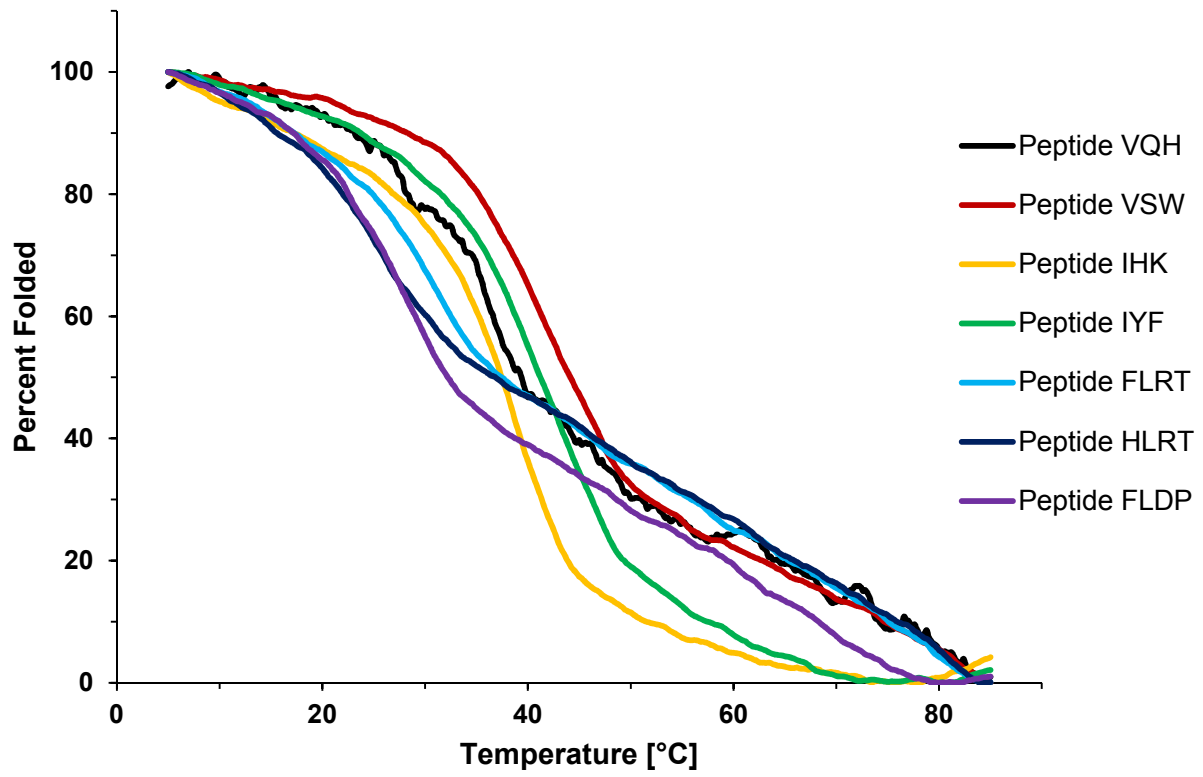


Figure S1. Melting curves for THPs.

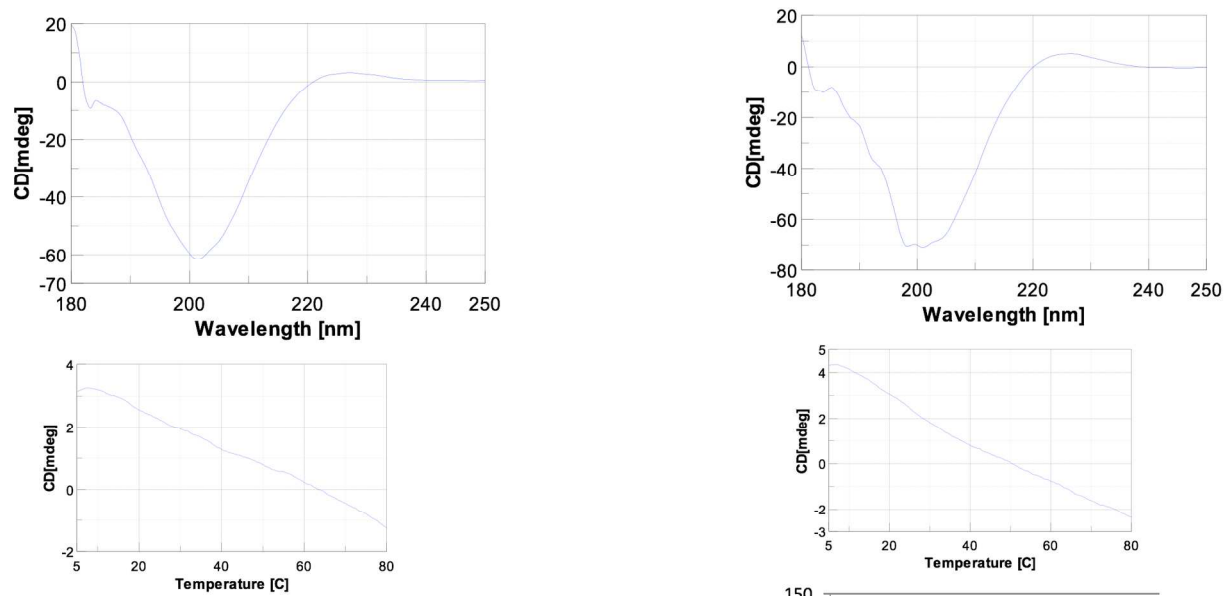


Figure S2. CD spectra (top) and melting curves (bottom) of Gly Ψ {PO₂H-CH₂}Ile-His-Lys-Gln THPI (left) and Gly Ψ {PO₂H-CH₂}Ile-Tyr-Phe-Gln THPI (right).

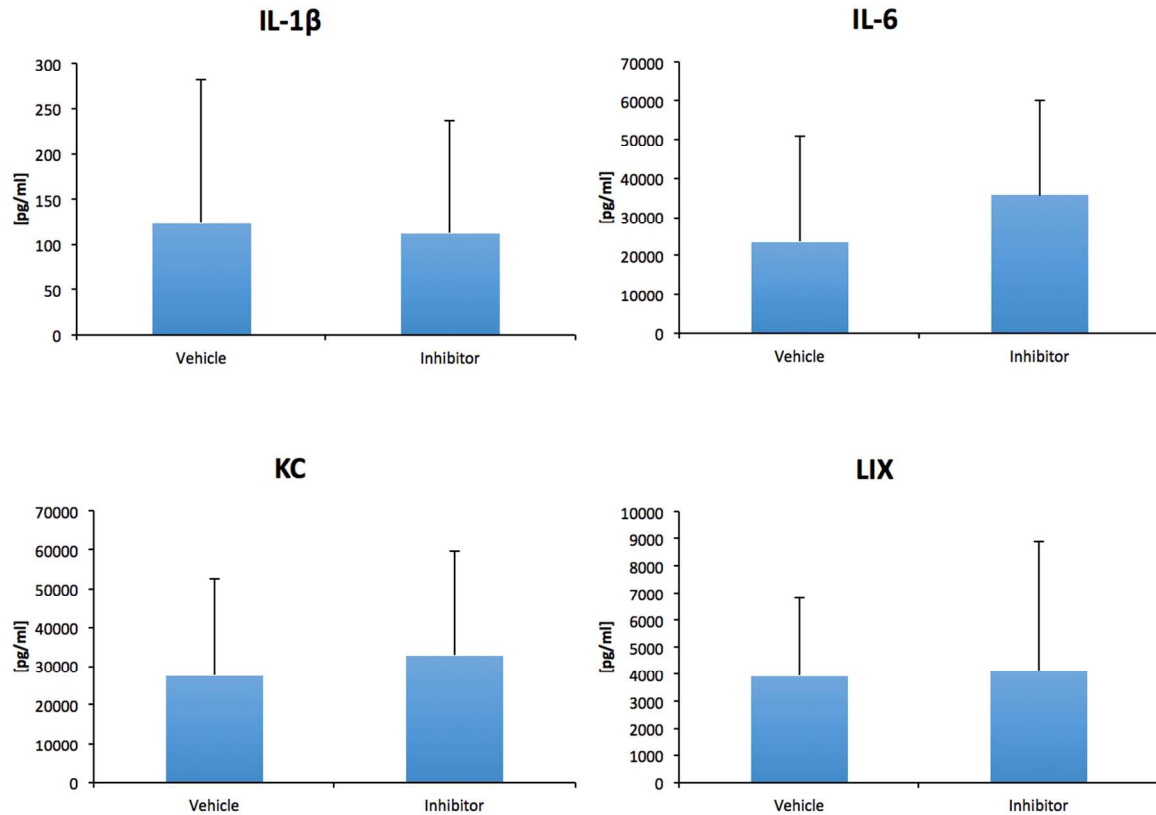


Figure S3. Serum cytokine profiles 24 h after CLP. One group of mice (n = 10) was treated with the Gly Ψ {PO₂H-CH₂}Ile-His-Lys-Gln THPI (10 mg/kg) immediately after CLP then 12 h later. The other group of mice (n = 10) was treated with saline vehicle using the identical schedule. p < 0.05 versus vehicle.

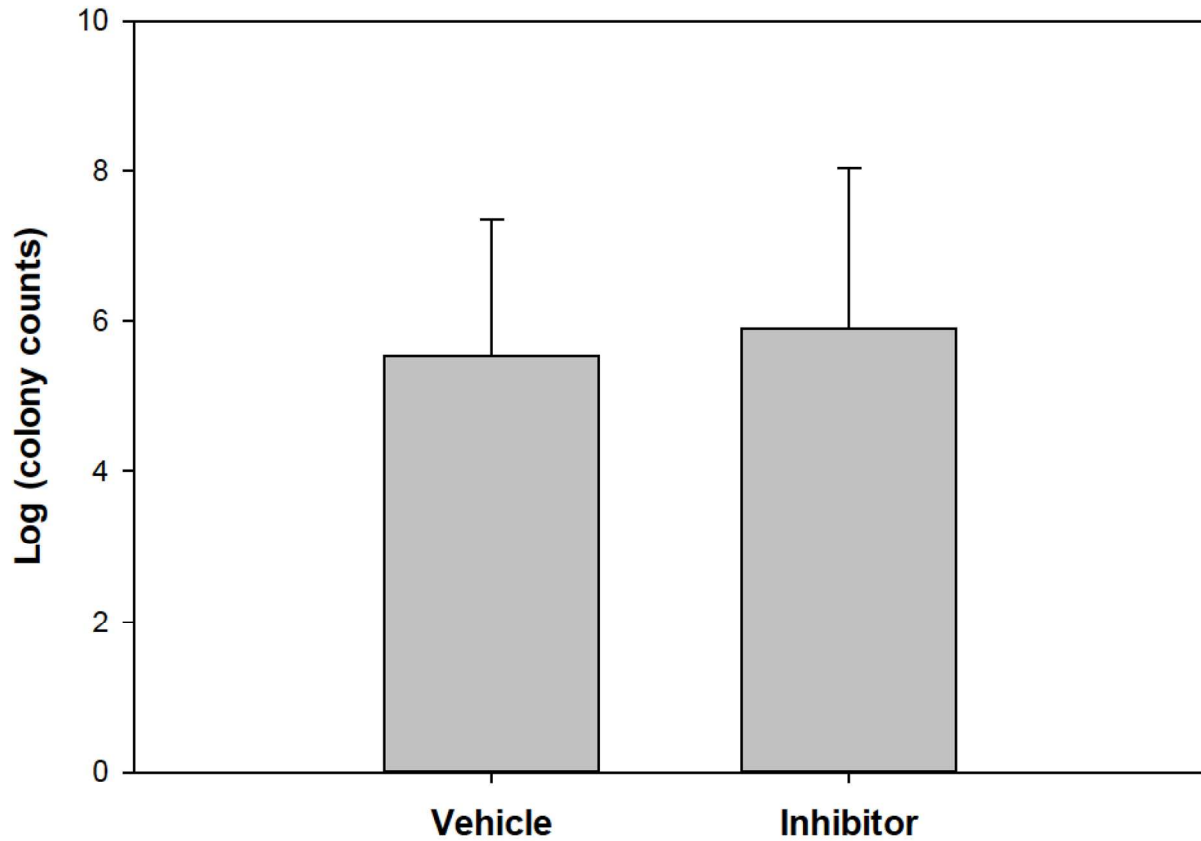


Figure S4. Wild-type mice bacterial colony counts in blood, 24 h after CLP. Data are shown as log transformed bacterial colony counts. One group of mice (n = 5) was treated with the Gly Ψ {PO₂H-CH₂}Ile-His-Lys-Gln THPI (10 mg/kg) immediately after CLP and then 12 h later. The other group of mice (n = 5) was treated with saline vehicle using the identical schedule. p < 0.404.