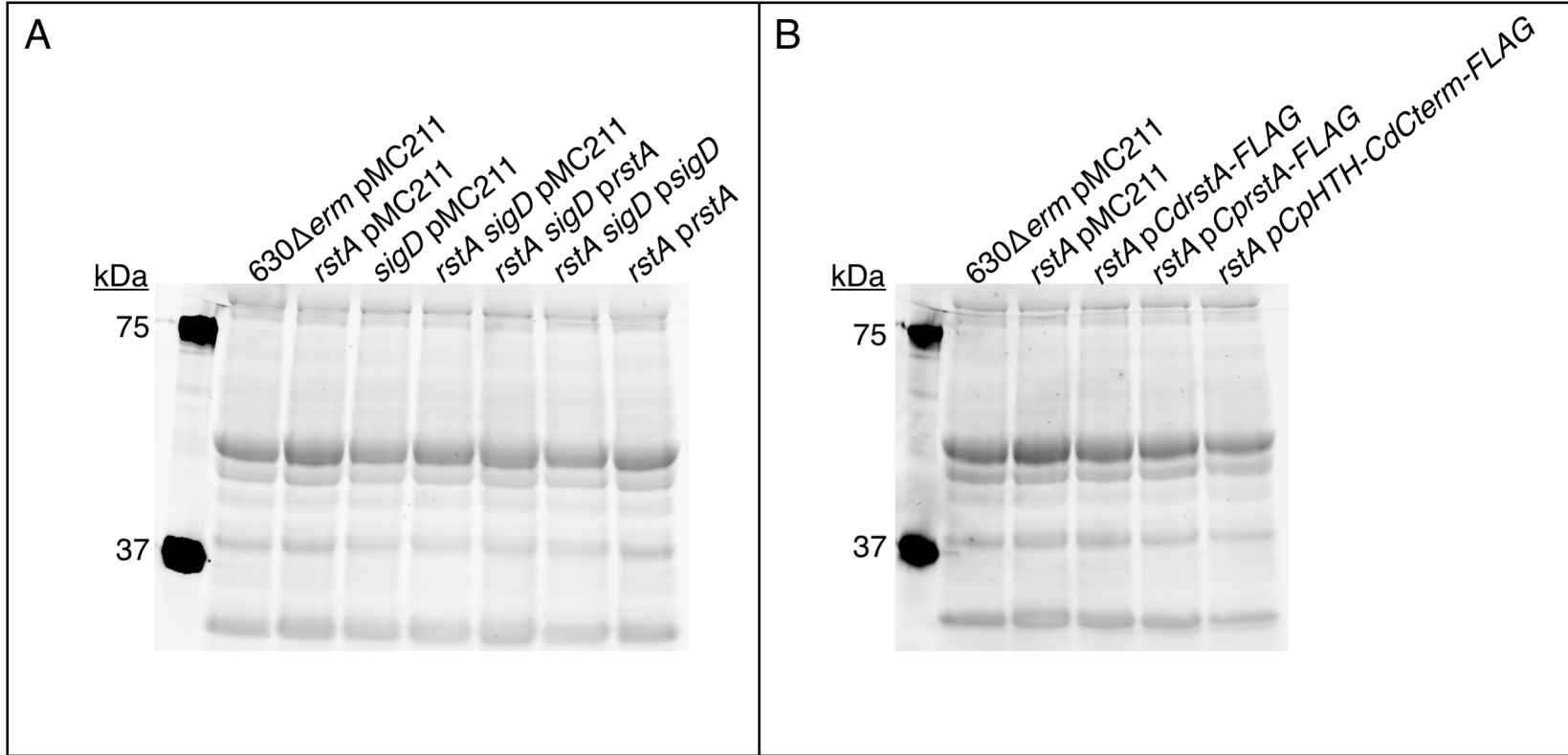


Figure S8.



**Figure S8. Total protein (8  $\mu$ g) transferred to nitrocellulose for TcdA western blotting.** The corresponding TGX Stain-free gels used for the indicated western blots shown in Fig. 5A (Panel A above) and Fig. 6A (Panel B above). For each strain tested, 8  $\mu$ g of total protein was loaded onto a 4-15% TGX Stain-free gel and imaged by a ChemiDoc (Bio-Rad) after electrophoresis. The protein was then transferred to nitrocellulose and the western blots were performed as described in the Materials and Methods.