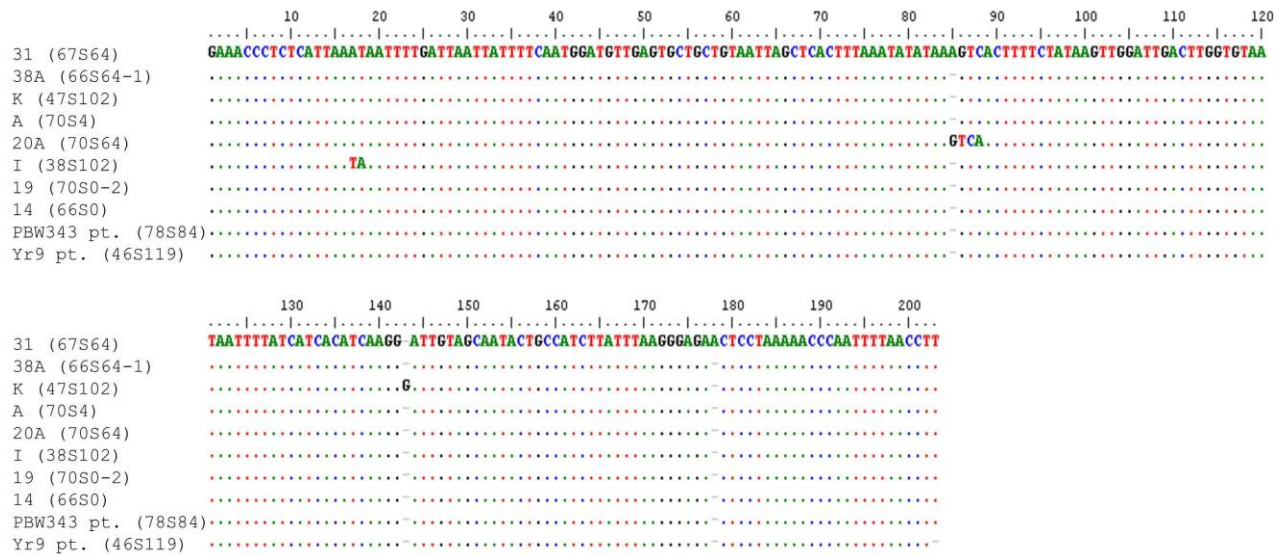


## Supplementary Material to "Molecular characterization of Indian pathotypes of *Puccinia striiformis* f. sp. *tritici* and multigene phylogenetic analysis to establish inter- and intraspecific relationships"



**Figure S3** - Multiple sequence alignment of internal transcribed spacer 2 (ITS2) region of 10 Indian pathotypes of *P. striiformis*.