

Crystal structures of thiamine monophosphate kinase from *Acinetobacter baumannii* in complex with substrates and products

Amy H. Sullivan^{1,2}, David M. Dranow^{1,2}, Peter S. Horanyi^{1,2}, Donald D. Lorimer^{1,2}, Thomas E. Edwards^{1,2}, Jan Abendroth^{1,2, *}

Affiliations

1) UCB/Beryllium Discovery, 7869 NE Day Road West, Bainbridge Island, WA, USA

2) Seattle Structural Genomics Center for Infectious Disease, Seattle WA, USA

* corresponding author: jan.abendroth@ucb.com

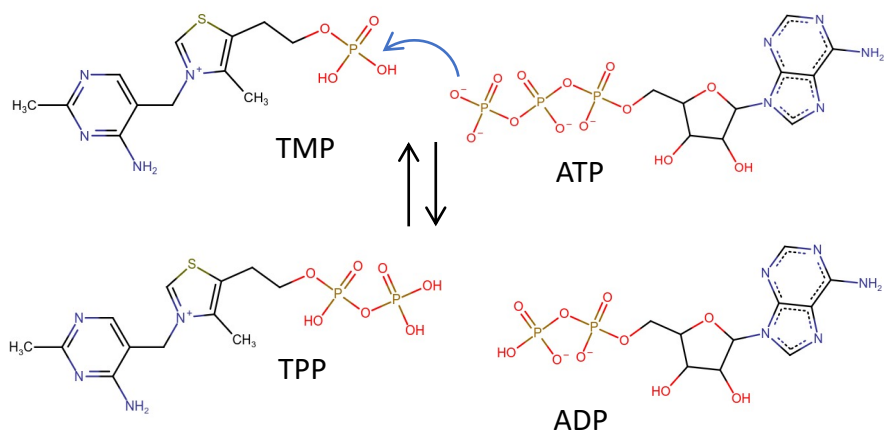


Figure S1:

A schematic representation of the reaction carried out by ThiL, the conversion of TMP and ATP to TPP and ADP.

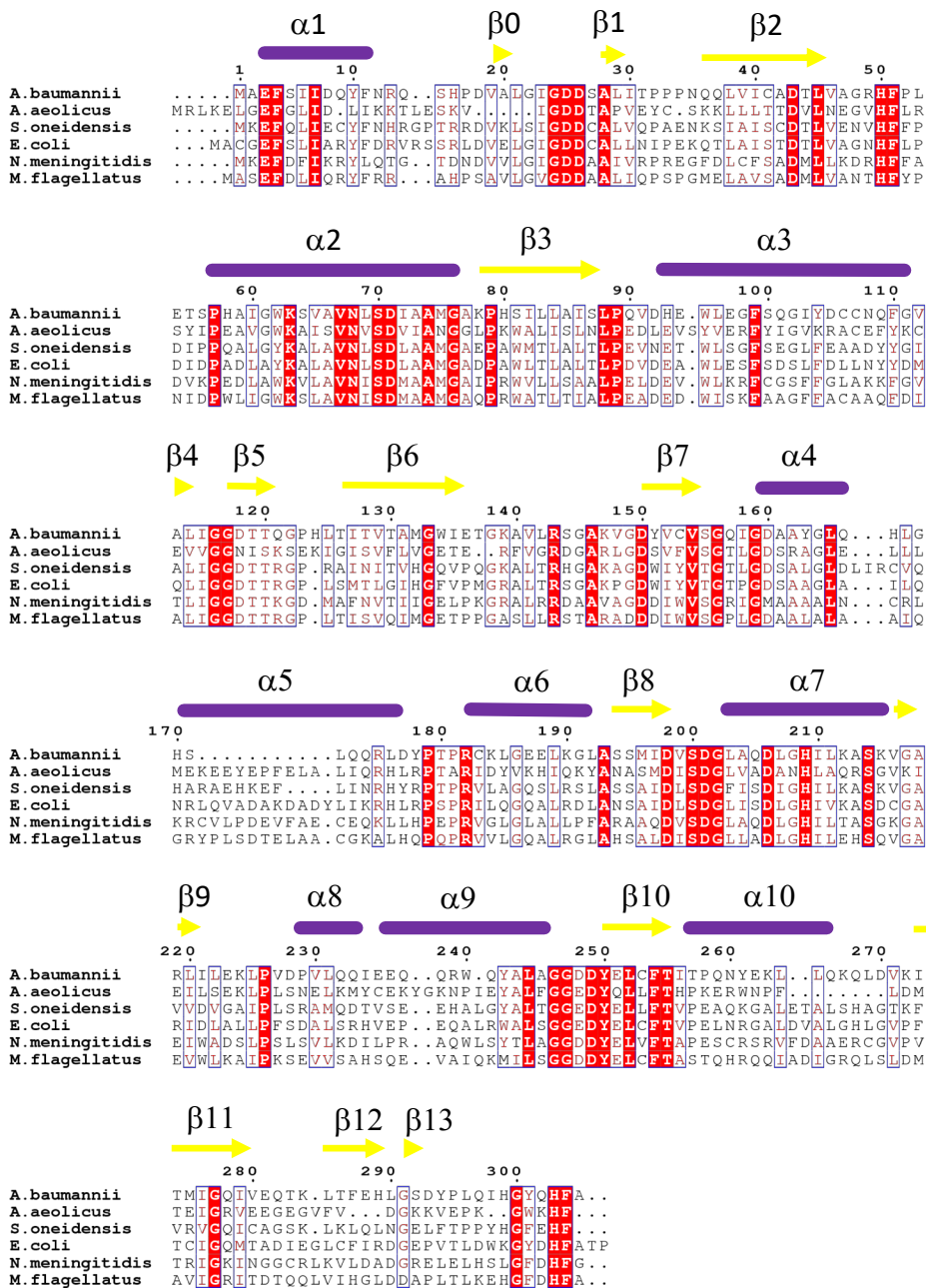


Figure S2:

Multiple sequence alignment of AbThiL with AaThiL, along with *Shevanella oneidensis*, *Escherichia coli*, *Neisseria meningitidis*, *Methylobacillus flagellatus*. The Figure was prepared with ESPript ²⁵