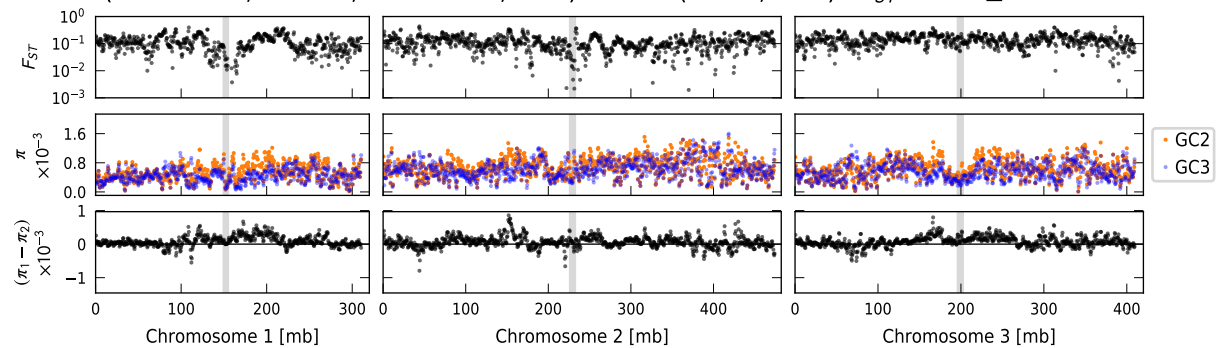
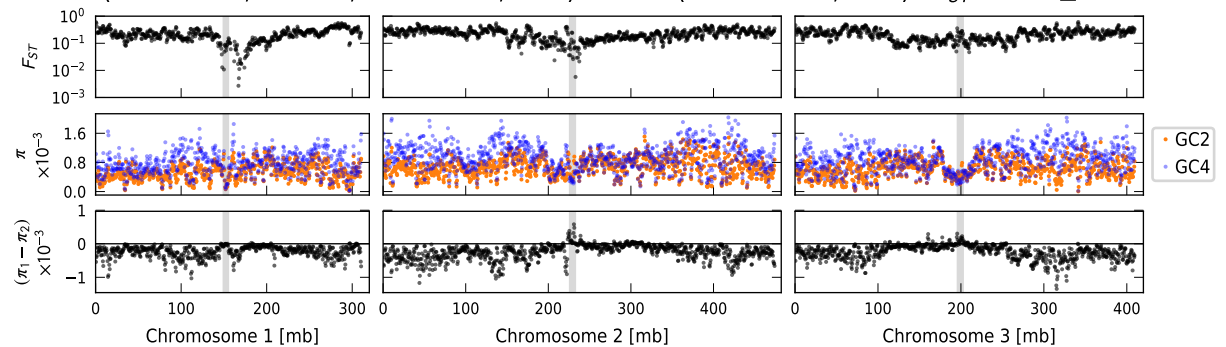
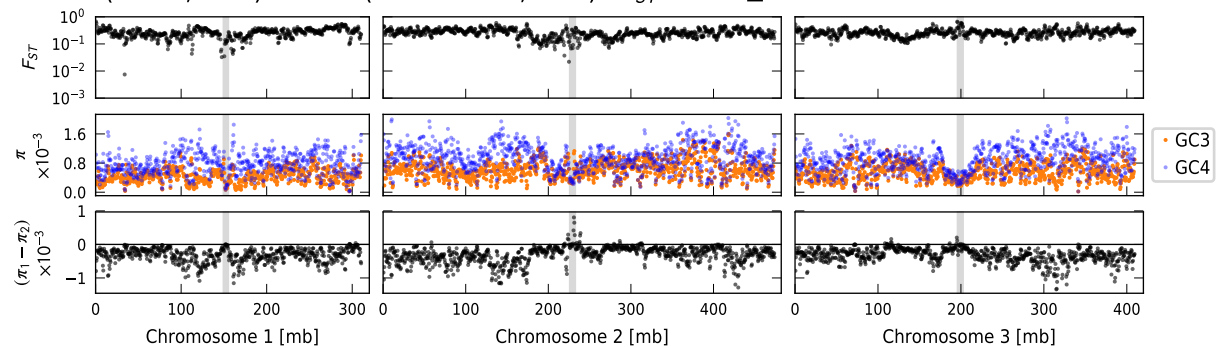


A: GC2 (Menlo Park, Madera, and Fresno, N=9) vs GC3 (Clovis, N=7) : $F_{ST}=0.129\pm 0.001$ **B: GC2 (Menlo Park, Madera, and Fresno, N=9) vs GC4 (South Africa, N=3) : $F_{ST}=0.232\pm 0.002$** **C: GC3 (Clovis, N=7) vs GC4 (South Africa, N=3) : $F_{ST}=0.273\pm 0.002$** **D: GC1 (Southern CA, N=18) vs GC1-B (Vero Beach, Exeter N=6) : $F_{ST}=0.091\pm 0.001$** 