

Supplementary Information for “Changes in the asymmetric distribution of cholesterol in the plasma membrane influence streptolysin O pore formation” by Fumihiko Ogasawara, Fumi Kano, Masayuki Murata, Yasuhisa Kimura, Noriyuki Kioka, and Kazumitsu Ueda

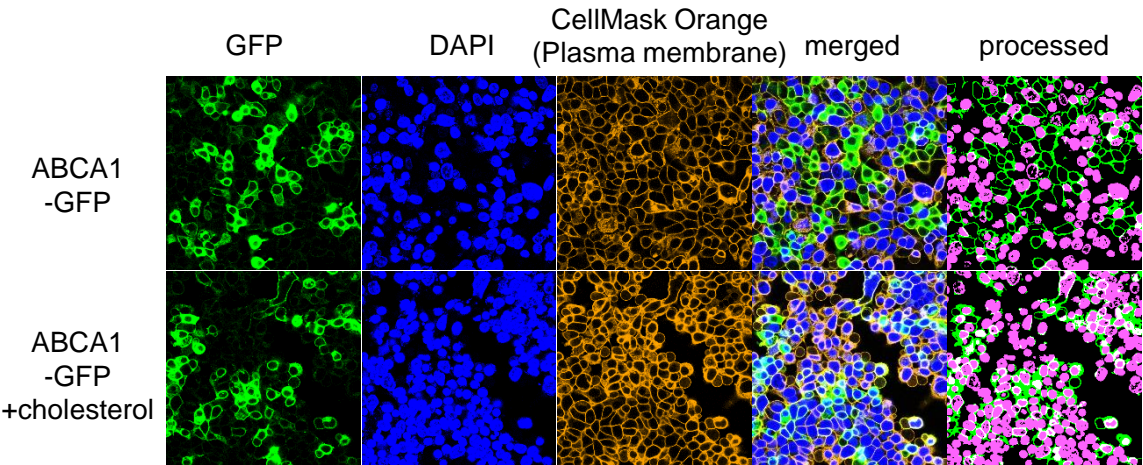
Supplementary Fig. 1. Original images of Fig. 4A.

Supplementary Fig. 2. Original images of Fig. 5A.

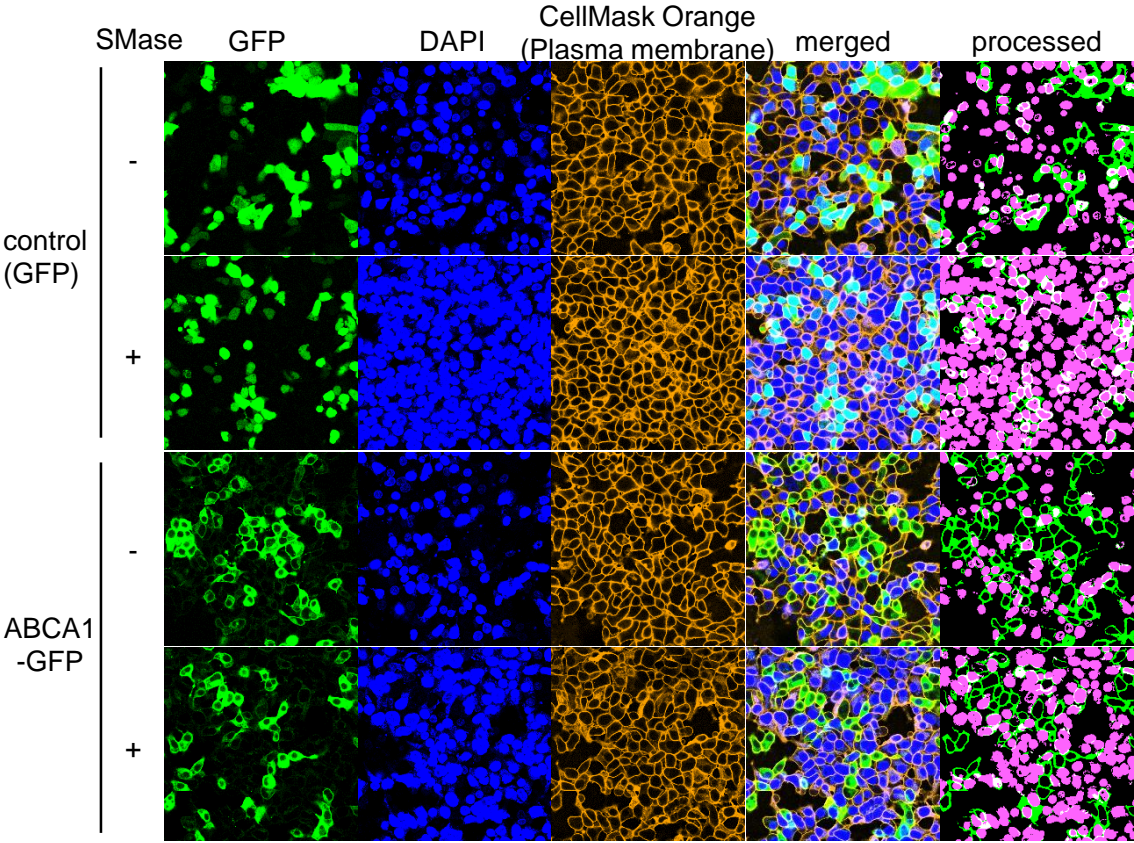
Supplementary Fig. 3. Original images of Fig. 6A, B.

Supplementary Fig. 4. The membrane used in Fig. 2A.

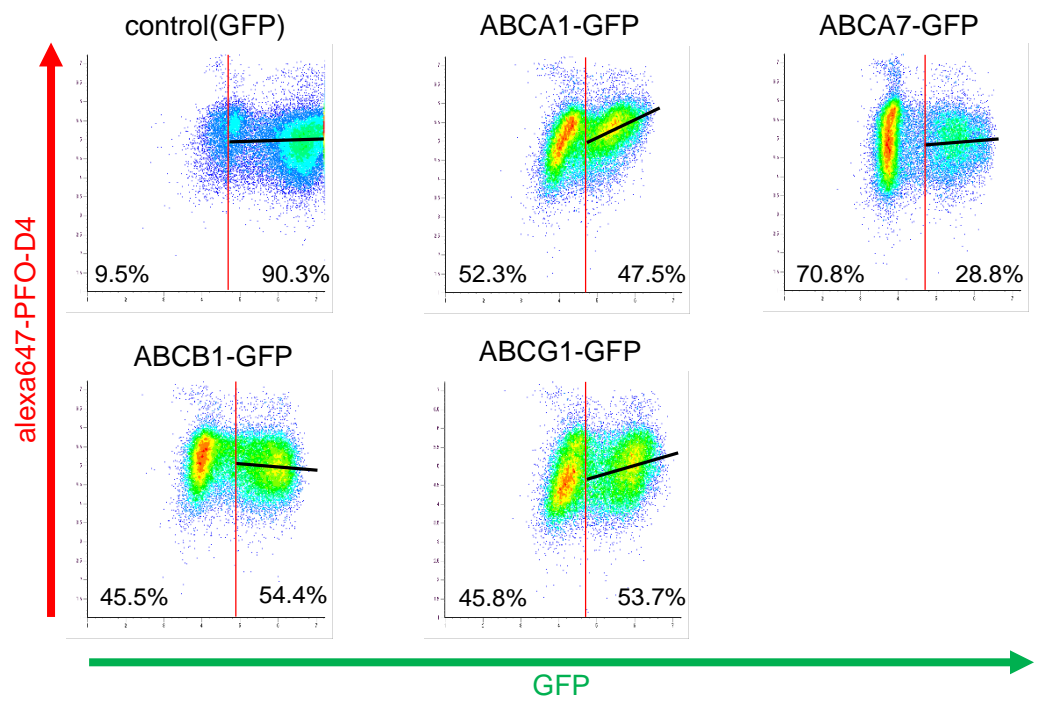
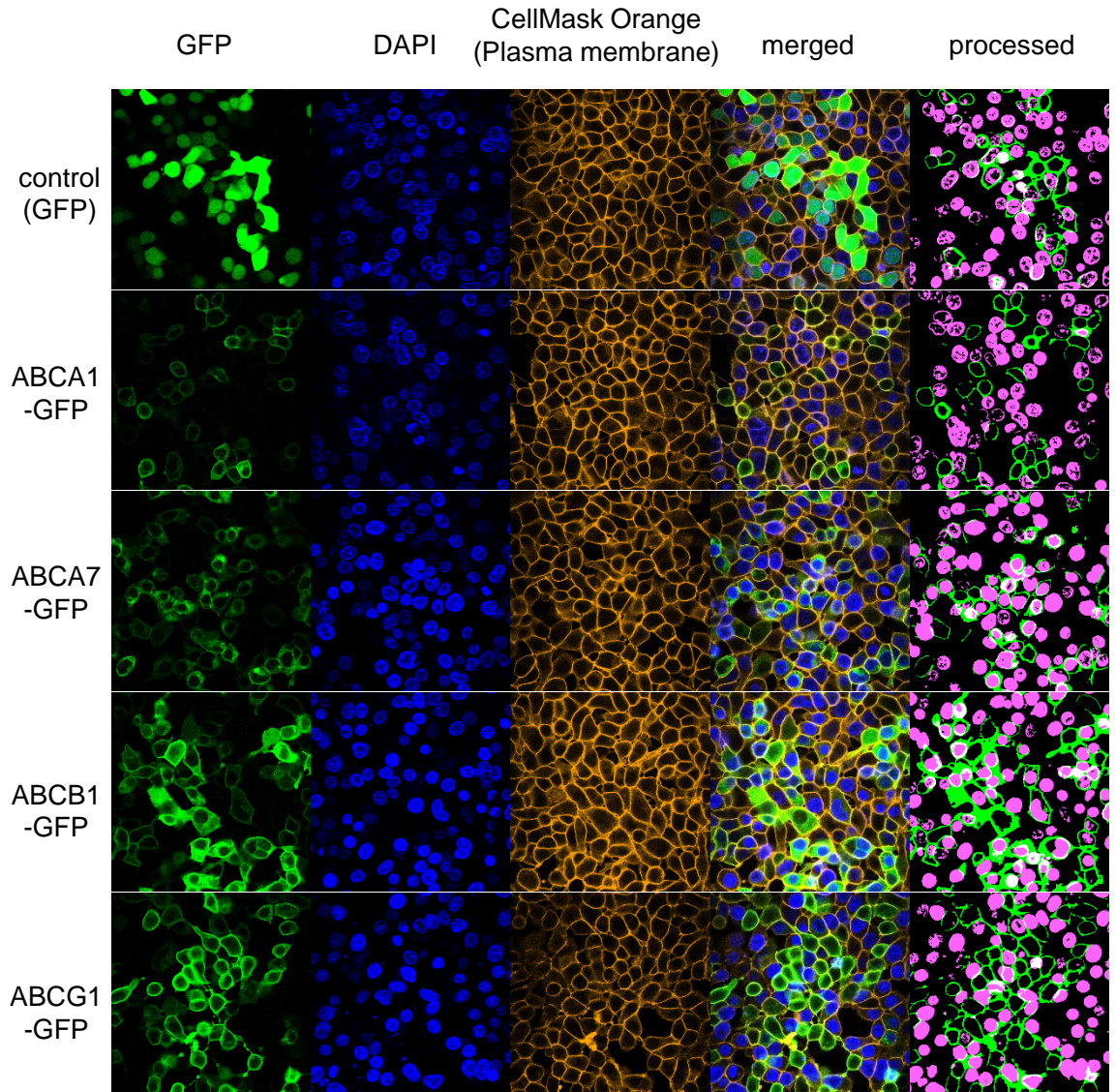
Supplementary Figure 1



Supplementary Figure 2

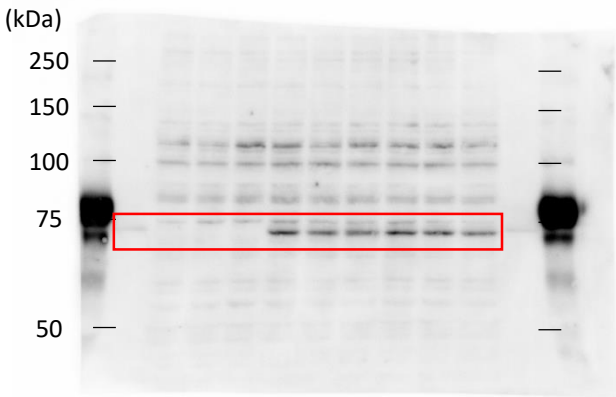


Supplementary Figure 3



Supplementary Figure 4

SLO



vinculin

