

# Supplementary Materials: Effect of Catechol Content in Catechol-Conjugated Dextrans on Antiplatelet Performance

Yeonwoo Jeong <sup>1,†</sup>, Kwang-A Kim <sup>1,†</sup> and Sung Min Kang <sup>1,\*</sup>

<sup>1</sup> Department of Chemistry, Chungbuk National University, Chungbuk 28644, Republic of Korea; ywjeong9104@gmail.com (Y.J.); kwangakim03@gmail.com (K.-A.K)

\* Correspondence: smk16@chungbuk.ac.kr; Tel.: +82-43-261-2289

† These authors equally contributed to this work.

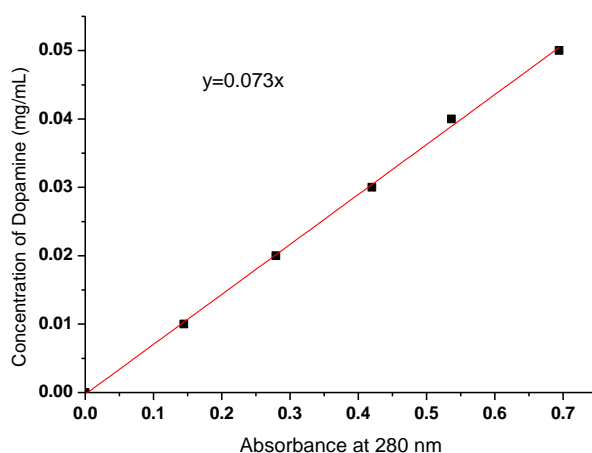
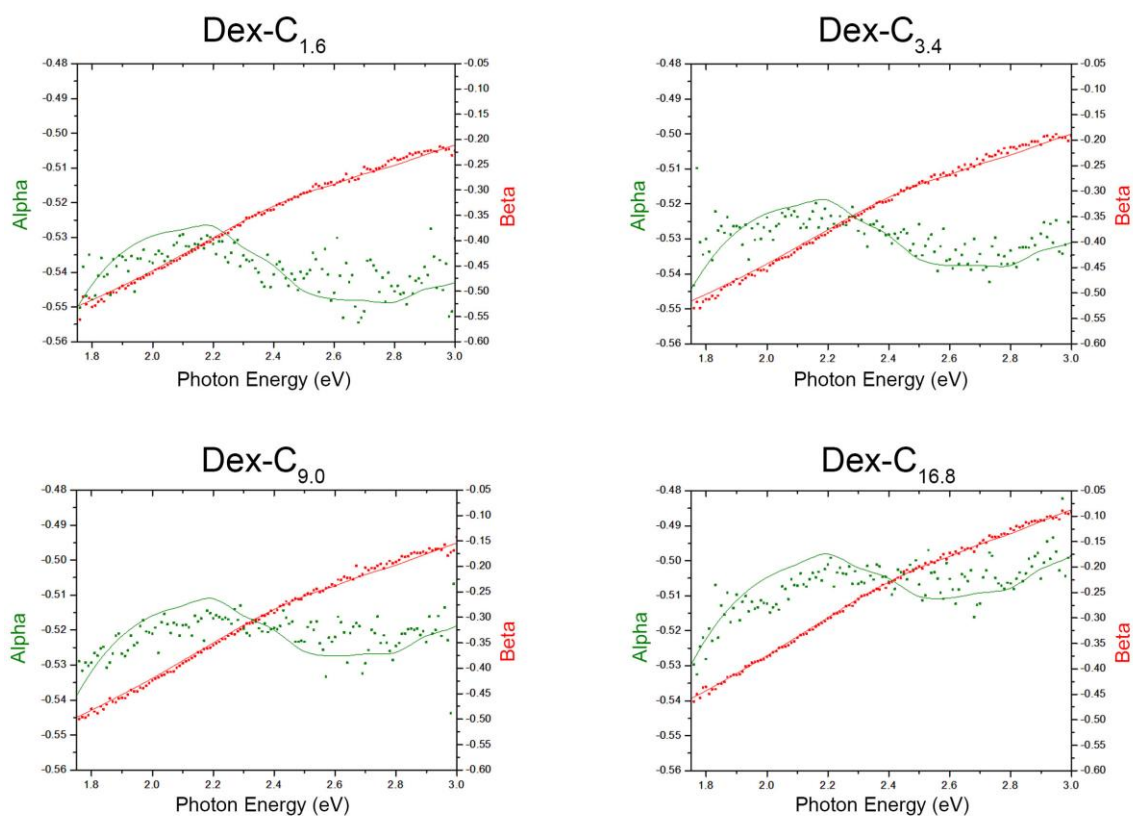
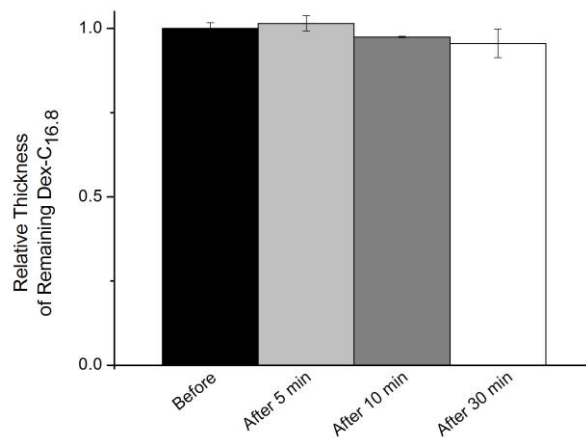


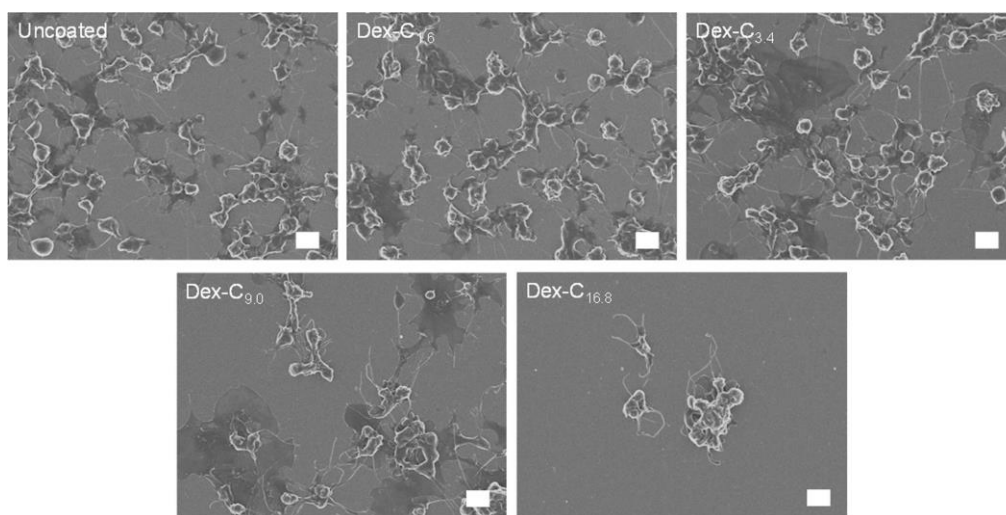
Figure S1. The calibration curve of dopamine.



**Figure S2.** Spectroscopic ellipsometry data of organic layers on Ti/TiO<sub>2</sub> surfaces after Dex-C<sub>1.6</sub>, Dex-C<sub>3.4</sub>, Dex-C<sub>9.0</sub>, and Dex-C<sub>16.8</sub> coatings (solid line: model, dotted line: experimental data).



**Figure S3.** Thicknesses of remaining Dex-C<sub>16.8</sub> on Ti/TiO<sub>2</sub> surfaces after sonication for 5, 10, and 30 min. The thickness of Dex-C<sub>16.8</sub> on Ti/TiO<sub>2</sub> surfaces before sonication was taken as 1. Error bars represent the standard deviation.



**Figure S4.** Magnified SEM images of platelets attached to uncoated, Dex-C<sub>1.6</sub>, Dex-C<sub>3.4</sub>, Dex-C<sub>9.0</sub>, and Dex-C<sub>16.8</sub>-coated Ti/TiO<sub>2</sub> surfaces. All scale bars are 2  $\mu$ m.