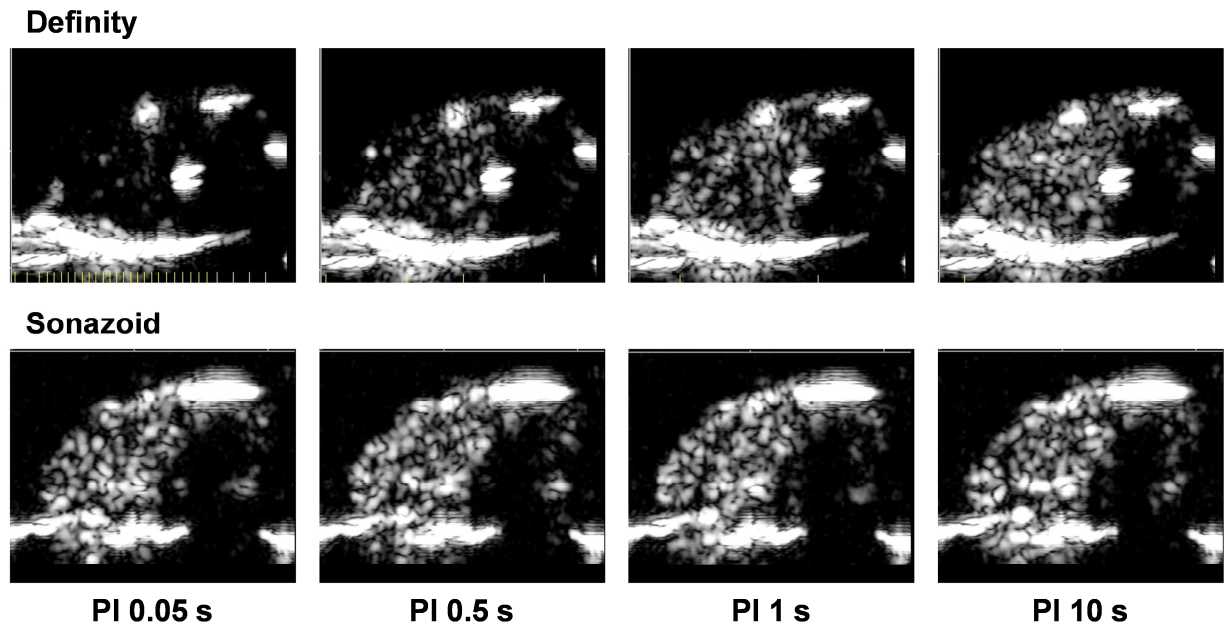
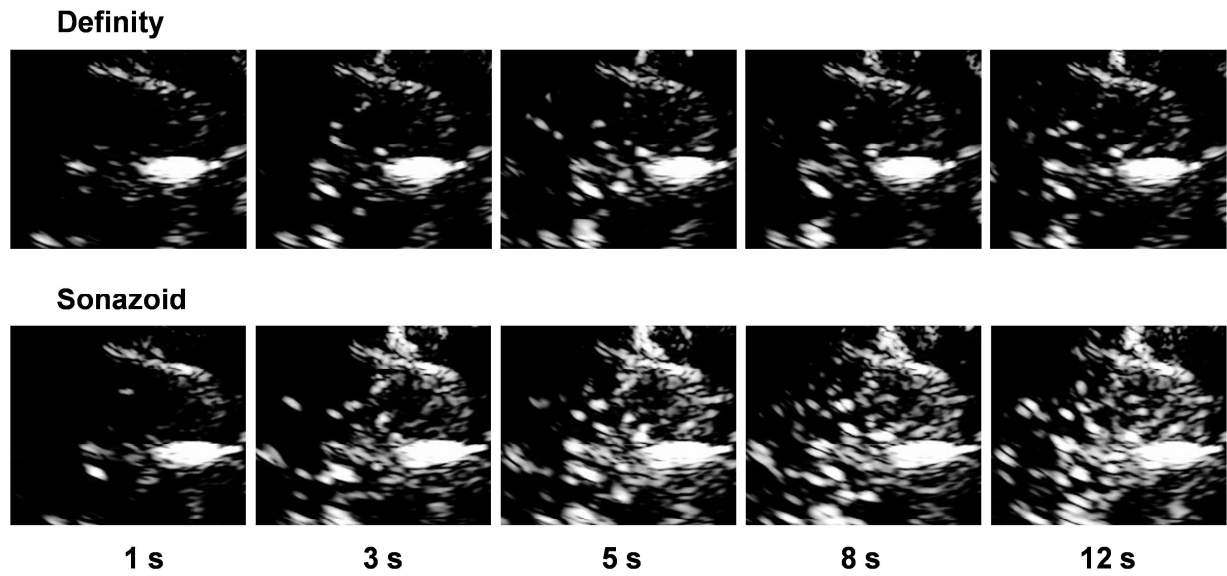


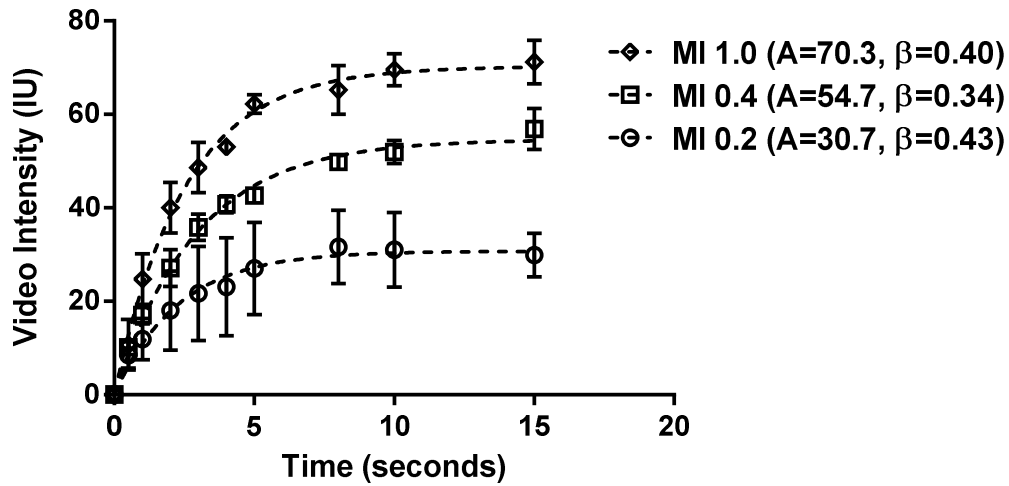
Supplemental Figure A. Example of size distribution of Definity and Sonazoid microbubbles. Both mean and median microbubble sizes are provided. The orifice for electrozone counting limited detection of submicron particles.



Supplemental Figure B. Examples from CEU imaging of the murine proximal hindlimb during infusion of Definity or Sonazoid at an MI of 0.3. Images obtained at various PIs illustrate similar muscle CEU intensity at a PI of 10 s for the two agents, but lower intensity for Definity at the shorter PIs due to destruction with each ultrasound frame. The areas lacking opacification at the right of each image is from femur attenuation.



Supplemental Figure C. Examples from CEU perfusion of the canine proximal adductor muscles obtained at a MI of 0.3 during infusion of Definity and Sonazoid microbubbles. Images are illustrated at different time intervals (seconds) after a destructive pulse sequence. The bright image in the middle-right of all images represents the femur acoustic interface.



Supplemental Figure C. Mean (\pm SEM) video intensity values obtained during CEU perfusion imaging in the murine hindlimb with either real-time imaging (MI 0.2 and 0.4) obtained at a frame rate of 2 Hz (PI 0.5 s) after a high-power destructive pulse sequence; and for intermittent high-power (MI 1.0) imaging. ANOVA $p=0.002$ for differences in average A-value; $p=ns$ for β -values.