

## Supplemental Data

1 Search Strategy in Medline (Wolters Kluwer, Ovid)

2

3 MEDLINE 1990 to November Week 3 2017,

4 MEDLINE Daily Update November 22, 2017

5 Search date (yyyy-mm-dd): 2017-11-24

6

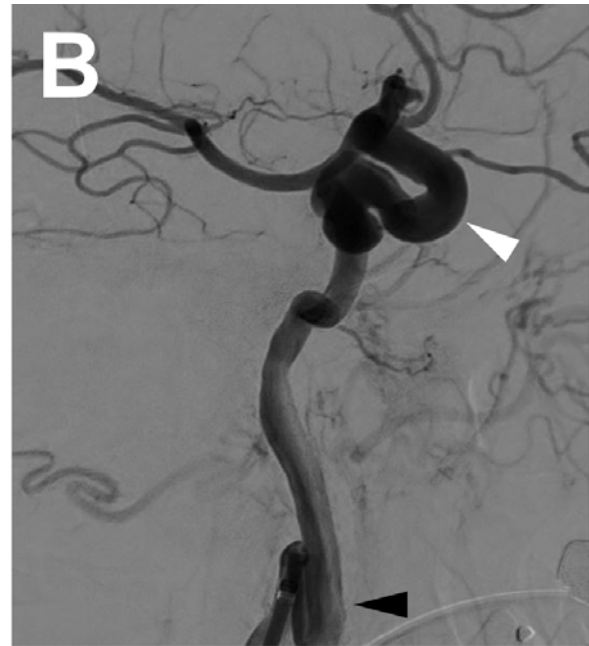
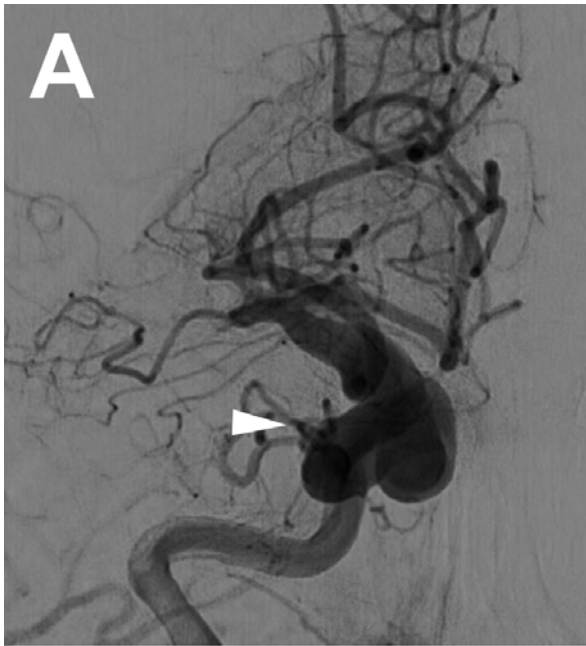
#	Searches	Results	Annotations
1	haplorhini/	49334	#1 - #26: Large animal (MeSH and textual words), engl., german
2	catarrhini/	86	
3	exp cercopithecidae/	124063	
4	hominidae/	8135	
5	gorilla gorilla/	1997	
6	pan paniscus/	530	
7	pan troglodytes/	9675	
8	exp pongo/	1341	
9	exp hylobatidae/	1001	
10	exp platyrrhini/	14302	
11	exp tarsii/	73	
12	exp swine/	215422	
13	exp sheep/	119206	
14	cats/	141501	
15	dogs/	333727	
16	rabbits/	355078	
17	exp goats/	30832	
18	horses/	67796	
19	cattle/	348808	
20	ferrets/	5813	
21	guinea pigs/	148328	
22	(large animal* or large mammal* or baboon* or beagle* or bovine* or cat or cats or canine* or	1427622	

Supplementary Table 1: Search strategy in Medline

- 1 **Web of Science Core Collection:**
- 2 **Science Citation Index Expanded (SCI-EXPANDED):**
- 3
- 4 **2017** (Host: Clarivate Analytics):
- 5 1990 to present (2017-11-22 data last updated).
- 6 Search date: 2017-11-24
- 7

#	Searches and annotations	Results
38	#37 OR #36 Indexes=SCI-EXPANDED Timespan=1990-2017	4,058
37	(#35 and ti=(systematic or metaanaly* or metanaly* or "meta-analy*")) AND <b>DOCUMENT TYPES:</b> (Review) Indexes=SCI-EXPANDED Timespan=1990-2017	3
36	#34 OR #33 <b>Refined by:</b> [excluding] <b>DOCUMENT TYPES:</b> ( EDITORIAL MATERIAL OR ITEM ABOUT AN INDIVIDUAL OR DISCUSSION OR REVIEW OR NOTE OR REPRINT OR NEWS ITEM ) Indexes=SCI-EXPANDED Timespan=1990-2017	4,055
35	#34 OR #33 Indexes=SCI-EXPANDED Timespan=1990-2017	4,334
34	(#31) AND <b>LANGUAGE:</b> (English OR German) <b>Refined by:</b> <b>RESEARCH AREAS:</b> ( NEUROSCIENCES NEUROLOGY OR CARDIOVASCULAR SYSTEM CARDIOLOGY OR RADIOLOGY NUCLEAR MEDICINE MEDICAL IMAGING OR ENGINEERING OR VETERINARY SCIENCES OR MATERIALS SCIENCE OR SCIENCE TECHNOLOGY OTHER TOPICS OR RESEARCH EXPERIMENTAL MEDICINE OR BIOTECHNOLOGY APPLIED MICROBIOLOGY OR EMERGENCY MEDICINE OR LIFE SCIENCES BIOMEDICINE OTHER TOPICS ) Indexes=SCI-EXPANDED Timespan=1990-2017	4,083

Supplementary Table 2: Search strategy in Web of Science



Supplementary Figure 1: DSA carotid siphon

DSA from mechanical thrombectomy procedure in elderly patient with acute MCA occlusion showing an extremely elongated carotid siphon (white arrows) in AP and lateral view. See additional tortuosity of cervical ICA (black arrow in B) making endovascular access challenging.