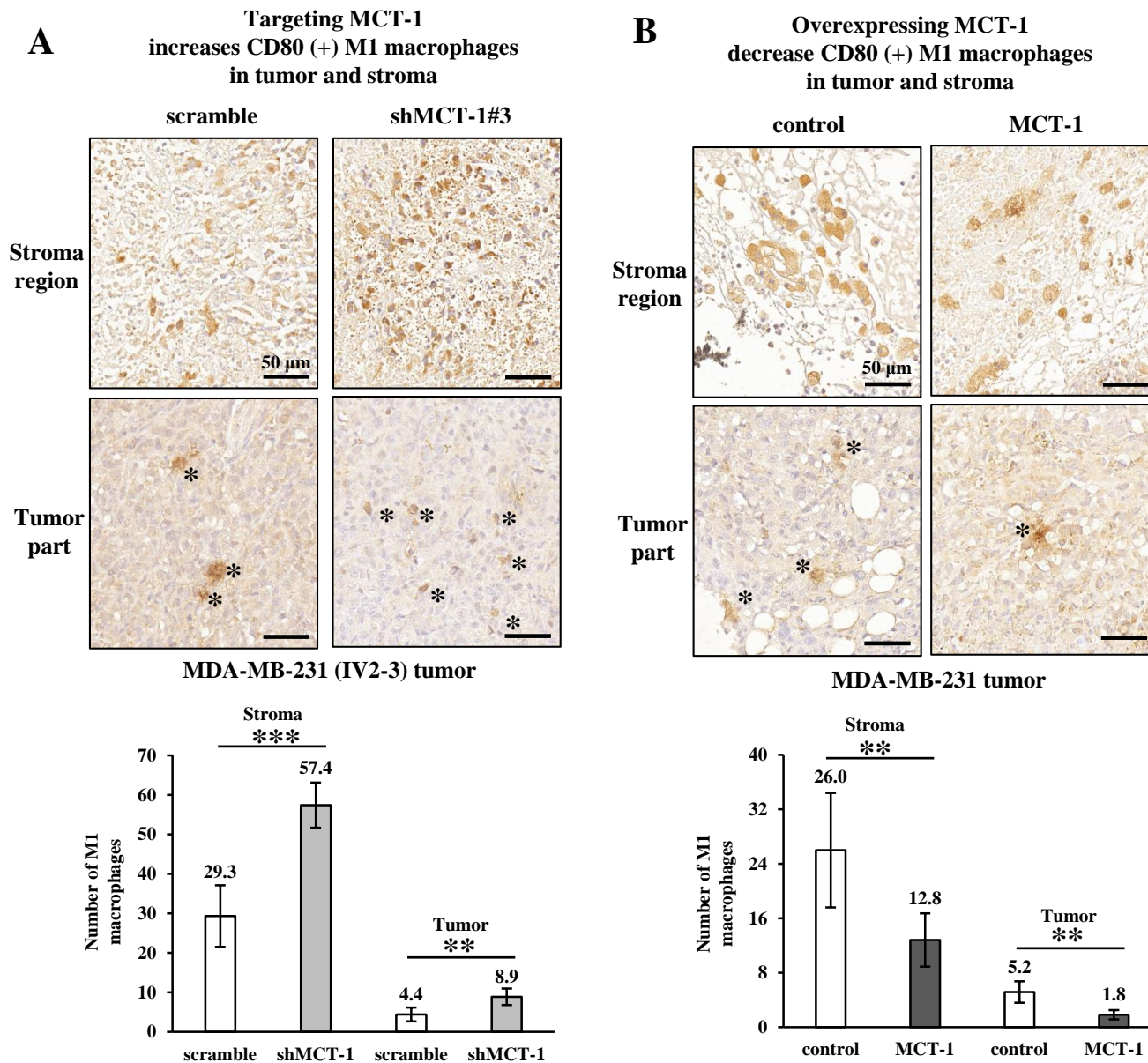


Fig. S4

Supplementary Fig. S4. CD80-positive M1 macrophages enriched in the TME after MCT-1 knockdown. CD80-positive M1 macrophages accumulated in stroma and retained in MDA-MB-231 (IV2-3) tumors (scramble vs. shMCT-1#3) (A) and in MDA-MB-231 tumors (control vs. MCT-1) (B) were examined by immunohistochemistry studies. The images were captured with 40X objective lens and macrophage numbers were counted. (scramble, n=5 vs. shMCT-1#3, n=8; control, n=6 vs. MCT-1, n=6). Scale bars, 50 μ m