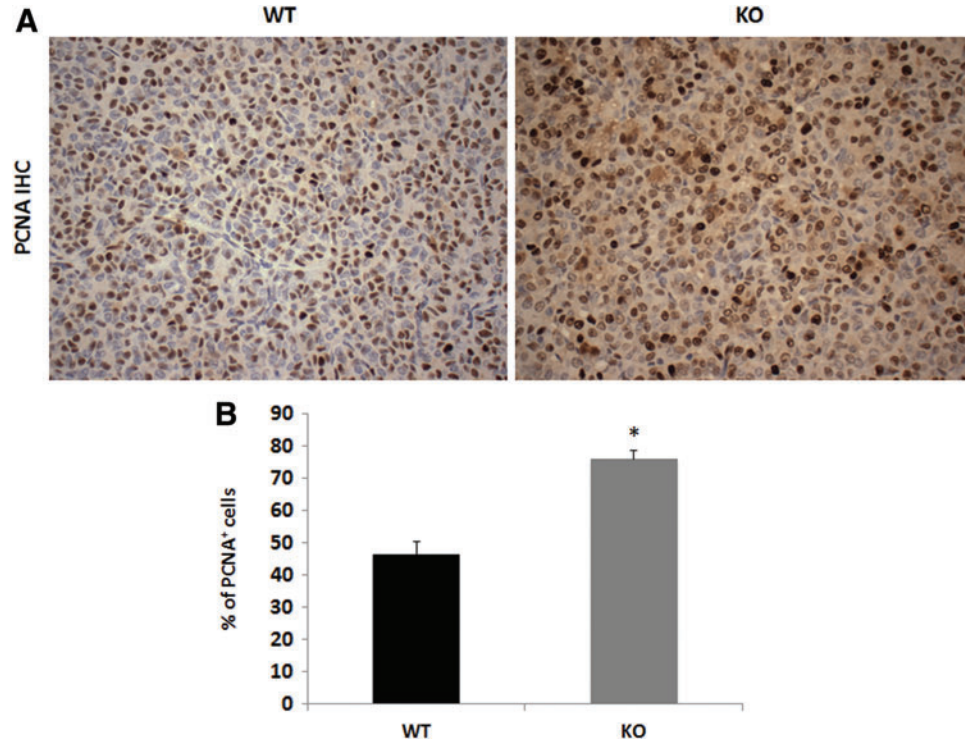


## Supplementary Data



**SUPPLEMENTARY FIG. S1. Lung tumors in Nrf2 KO mice proliferate more rapidly than tumors in Nrf2 WT mice.** PCNA, a biomarker of proliferation, was stained on tumor sections by IHC. (A) Representative pictures of PCNA staining on tumors of Nrf2 WT *versus* KO mice. (B) Quantification of PCNA positive cells was analyzed by ImageJ. \* $p < 0.05$  WT *versus* KO. IHC, immunohistochemistry; KO, knockout; Nrf2, nuclear factor (erythroid-derived 2)-like 2) PCNA, proliferating cell nuclear antigen; WT, wildtype.